

reliable ^ professional ^ achievable



# 4 Hardware

2014 edition

[www.lifting.com.au](http://www.lifting.com.au)



# Hardware



# 4

We supply a comprehensive range of shackles and rigging hardware items for the most demanding working environments.

The range comprises all forms of shackles from dee, bow, safety pin and screw collar types, to turnbuckles, collared eye bolts and eye nuts, chain split links, snap hooks, quick links and swivels to suit your work load.

<b>Shackles Overview</b>	<b>160</b>
Colour Coded Grade 'S' Screw Pin Bow Shackles	162
Colour Coded Grade 'S' Safety Pin Bow Shackles	163
Yellow Pin Grade 'S' Shackles	164
Yellow Pin Grade 'S' Safety Pin Shackles	166
Offshore Lifting Shackles	167
Grade "M" Shackles	168
Commercial Grade Shackles	170
<b>Rigging Screws &amp; Turnbuckles</b>	<b>172</b>
Rigging Screws	172
Stub Turnbuckles	175
Super Buckles	176
Commercial Turnbuckles	177
<b>Eye Bolts &amp; Nuts</b>	<b>179</b>
Lifting Eye Bolts – Collared	179
Lifting Eye Bolts – Shouldered	182
<b>Links, Hooks &amp; Swivels</b>	<b>183</b>
Chain Split Links	183
Snap Hooks, Quick Links	183
Mooring Swivels	184
<b>Lifting and Lashing Points</b>	<b>185</b>
Grade 100 Weld-on Lifting and Lashing Rings	185
RUD Lifting Points, Load Rings, Eye Bolts & Nuts	187
Weld-on Load Rings & Lifting Points	201
<b>Concrete Clutches</b>	<b>207</b>

# Shackles

Shackles are used in lifting and static systems as removable links to connect (steel) wire rope, chain and other fittings.

- › Screw pin shackles are commonly used for non-permanent applications.
- › Safety pin shackles are used for long-term or permanent applications or where the load may slide on the pin, causing rotation of the pin.
- › Dee shackles are typically used on one-leg systems whereas Bow shackles are mainly used on multi-leg systems.

Shackles should be inspected before use to ensure that:

- › All markings are legible
- › The threads of the pin and the body are undamaged
- › The body and the pin are not distorted or unduly worn
- › The body and pin are free from nicks, gouges, cracks and corrosion
- › The shackle is not to be heat treated as this may affect their Working Load Limit
- › **Never modify, repair or reshape a shackle by welding, heating or bending as this will affect the Working Load Limit.**
- › **Never use a safety bolt type shackle without using the split cotter pin**



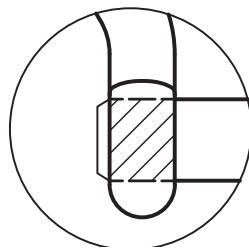
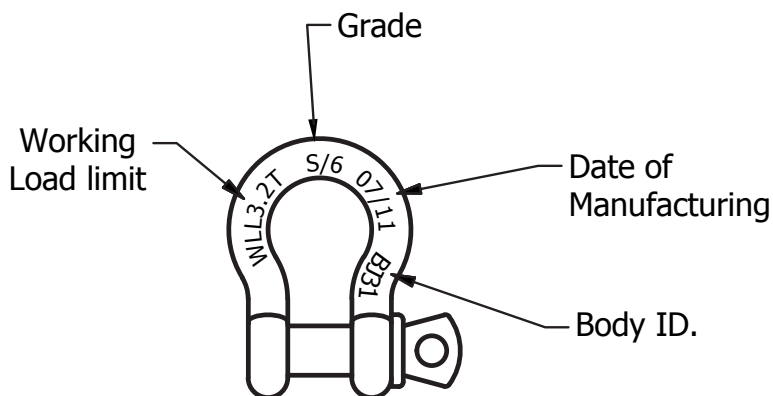
# Shackles

## Grade 'S' Shackles

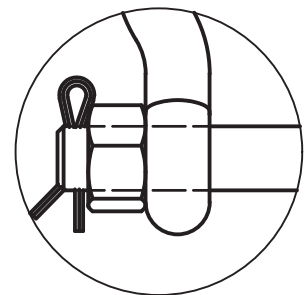
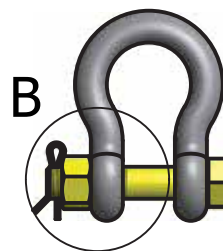


Our Grade S Shackles are a rated shackle that meet the requirement of AS 2741. Grade S Shackles are the most common shackles used in lifting applications, with a high strength to size ratio

- › Available in both Dee and Bow configurations
- › Available in both Screw Pin and Safety Pin type – see drawing A and B for more information
- › Because the pin holds more load than the body, the pin diameter is larger than the body diameter
- › For the same W.L.L., they are smaller than grade M
- › Our Grade S Shackles come in two colour configurations:
  - Beaver Standard Grade S: Yellow pin
  - Beaver Colour Coded Grade S: Body and pin colour coded to AS 2741, for easy match to components
- › The Body ID and date of Manufacture = the Batch ID



Detail A  
Screw Pin



Detail B  
Safety Pin

# Shackles

## Colour Coded Grade 'S' Screw Pin Bow Shackles

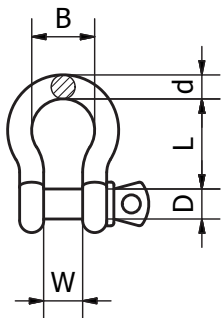


Capacities: Screw Pin : 1 to 12 tonne; Safety Pin: 2 to 8.5 tonne

Beaver Colour Coded Shackles take the guesswork out of choosing the right capacity when matching lifting components. Colour coding to international lifting standards.

Screw Pin Bow Shackles Grade 'S' to AS 2741

Product Code	Size (mm)	WLL (t)	Type	Shape	Closing Method	Shackle Colour	DIA d (mm)	Pin DIA D (mm)	Inside Width W (mm)	Inside Length L (mm)	Width of Bow B (mm)	DIA Boss F (mm)	Approx Weight (kg)	UOM	Pack Qty
242310M	10 x 11	1.00	Grade S	Bow	Screw	Violet	10	11	17	37	26	25	0.15	Each	180
242313M	13 x 16	2.00	Grade S	Bow	Screw	Green	13	16	21	48	33	33	0.37	Each	75
242316M	16 x 19	3.20	Grade S	Bow	Screw	Yellow	16	19	27	61	43	40	0.65	Each	35
242319M	19 x 22	4.70	Grade S	Bow	Screw	Grey	19	22	32	72	51	48	1.06	Each	20
242322M	22 x 25	6.50	Grade S	Bow	Screw	Brown	22	25	37	84	58	54	1.56	Each	15
242325M	25 x 29	8.50	Grade S	Bow	Screw	Blue	25	29	43	95	68	60	2.32	Each	10
242332M	32 x 35	12.00	Grade S	Bow	Screw	Orange	32	35	52	119	83	76	4.51	Each	5



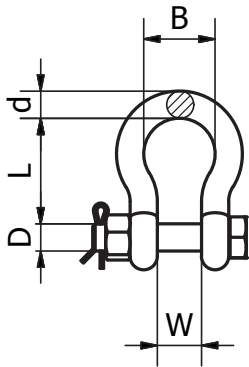
# Shackles

## Colour Coded Grade 'S' Safety Pin Bow Shackles



Safety Pin Bow Shackles Grade 'S' to AS 2741

Product Code	Size (mm)	WLL (t)	Type	Shape	Closing Method	Shackle Colour	DIA d (mm)	Pin DIA D (mm)	Inside Width W (mm)	Inside Length L (mm)	Width of Bow B (mm)	DIA Boss F (mm)	Approx Weight (kg)	UOM	Pack Qty
244313M	13 x 16	2.00	Grade S	Bow	Safety Pin	Green	13	16	21	48	33	33	0.44	Each	50
244316M	16 x 19	3.20	Grade S	Bow	Safety Pin	Yellow	16	19	27	61	43	40	0.79	Each	30
244319M	19 x 22	4.70	Grade S	Bow	Safety Pin	Grey	19	22	32	72	51	48	1.26	Each	20
244322M	22 x 25	6.50	Grade S	Bow	Safety Pin	Brown	22	25	37	84	58	54	1.88	Each	12
244325M	25 x 29	8.50	Grade S	Bow	Safety Pin	Blue	25	29	43	95	68	60	2.78	Each	10



**Colour Coded for Safety**



# Shackles

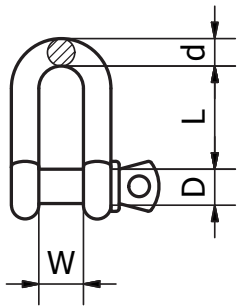
## Yellow Pin Grade 'S' Shackles



Yellow Pin Grade 'S' Screw Pin Shackles to AS2741

Chain Dee Type – Capacities 0.5 - 35 tonne

Product Code	Size (mm)	WLL (t)	Type	Shape	Closing Method	DIA d (mm)	DIA PIN D (mm)	Inside Width W (mm)	Inside Length L (mm)	DIA Boss F (mm)	Approx Weight (kg)	UOM	Pack Qty
241306	6 x 8	0.50	Grade S	Dee	Screw	6	8	12	22	17	0.06	Each	500
241308	8 x 10	0.75	Grade S	Dee	Screw	8	10	13	26	21	0.11	Each	300
241310	10 x 11	1.00	Grade S	Dee	Screw	10	11	17	32	25	0.15	Each	200
241311	11 x 13	1.50	Grade S	Dee	Screw	11	13	18	37	27	0.21	Each	100
241313	13 x 16	2.00	Grade S	Dee	Screw	13	16	21	41	33	0.37	Each	80
241316	16 x 19	3.20	Grade S	Dee	Screw	16	19	27	51	40	0.65	Each	40
241319	19 x 22	4.70	Grade S	Dee	Screw	19	19	32	60	48	1.06	Each	20
241322	22 x 25	6.50	Grade S	Dee	Screw	22	25	37	71	54	1.56	Each	15
241325	25 x 29	8.50	Grade S	Dee	Screw	25	29	43	81	60	2.32	Each	10
241329	29 x 32	9.50	Grade S	Dee	Screw	29	32	46	90	67	3.28	Each	8
241332	32 x 35	12.00	Grade S	Dee	Screw	32	35	52	100	76	4.51	Each	5
241335	35 x 38	13.50	Grade S	Dee	Screw	35	38	57	113	84	5.43	Each	4
241338	38 x 41	17.00	Grade S	Dee	Screw	38	41	60	124	92	7.89	Each	3
241344	44 x 51	25.00	Grade S	Dee	Screw	44	51	73	146	110	13.4	Each	2
241351	51 x 57	35.00	Grade S	Dee	Screw	51	57	83	171	127	18.85	Each	1



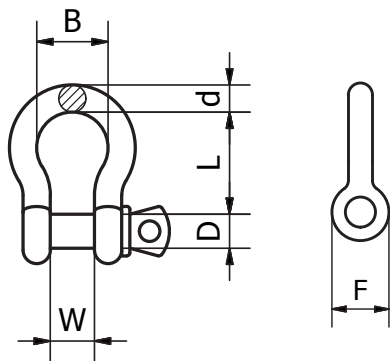
# Shackles



## Yellow Pin Grade 'S' Screw Pin Shackles to AS2741

Anchor Bow Type – Capacities 0.33 - 55 tonne

Product Code	Size (mm)	WLL (t)	Type	Shape	Closing Method	DIA d (mm)	DIA PIN D (mm)	Inside Width W (mm)	Inside Length L (mm)	Width of Bow B (mm)	DIA Boss F (mm)	Approx Weight (kg)	UOM	Pack Qty
242305	5 x 6	0.33	Grade S	Bow	Screw	5	6	10	22	15	14	0.02	Each	740
242306	6 x 8	0.5	Grade S	Bow	Screw	6	8	12	29	20	17	0.06	Each	700
242308	8 x 10	0.75	Grade S	Bow	Screw	8	10	13	31	21	21	0.11	Each	25
242310	10 x 11	1	Grade S	Bow	Screw	10	11	17	37	26	25	0.15	Each	180
242311	11 x 13	1.5	Grade S	Bow	Screw	11	13	18	43	29	27	0.21	Each	100
242313	13 x 16	2	Grade S	Bow	Screw	13	16	21	48	33	33	0.37	Each	75
242316	16 x 19	3.2	Grade S	Bow	Screw	16	19	27	61	43	40	0.65	Each	35
242319	19 x 22	4.7	Grade S	Bow	Screw	19	19	32	72	51	48	1.06	Each	20
242322	22 x 25	6.5	Grade S	Bow	Screw	22	25	37	84	58	54	1.56	Each	15
242325	25 x 29	8.5	Grade S	Bow	Screw	25	29	43	95	68	60	2.32	Each	10
242329	29 x 32	9.5	Grade S	Bow	Screw	29	32	46	108	74	67	3.28	Each	6
242332	32 x 35	12	Grade S	Bow	Screw	32	35	52	119	83	76	4.51	Each	5
242335	35 x 38	13.5	Grade S	Bow	Screw	35	38	57	133	92	84	5.43	Each	3
242338	38 x 41	17	Grade S	Bow	Screw	38	41	60	146	98	92	7.89	Each	3
242344	44 x 51	25	Grade S	Bow	Screw	44	51	73	178	127	110	13.40	Each	2
242351	51 x 57	35	Grade S	Bow	Screw	51	57	83	197	146	127	18.85	Each	1
242363	63 x 70	55	Grade S	Bow	Screw	63	70	105	267	184	152	37.86	Each	1





# Shackles

## Yellow Pin Grade 'S' Safety Pin Shackles



Yellow Pin Grade 'S' Safety Pin Shackles to AS2741

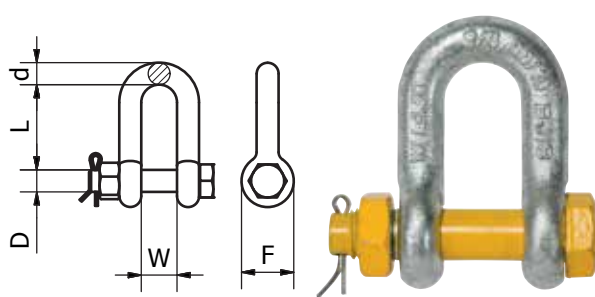
Dee Type – Capacities 2.0 - 13.5 tonne

Product Code	Size (mm)	WLL (t)	Type	Shape	Closing Method	DIA d (mm)	DIA PIN D (mm)	Inside Width W (mm)	Inside Length L (mm)	DIA Boss F (mm)	Approx Weight (kg)	UOM	Pack Qty
243313	13 x 16	2.00	Grade S	Dee	Safety Pin	13	16	21	41	33	0.44	Each	60
243316	16 x 19	3.20	Grade S	Dee	Safety Pin	16	19	27	51	40	0.79	Each	35
243319	19 x 22	4.70	Grade S	Dee	Safety Pin	19	19	32	60	48	1.26	Each	20
243322	22 x 25	6.50	Grade S	Dee	Safety Pin	22	25	37	71	54	1.88	Each	12
243325	25 x 29	8.50	Grade S	Dee	Safety Pin	25	29	43	81	60	2.78	Each	10
243329	29 x 32	9.50	Grade S	Dee	Safety Pin	29	32	46	90	67	3.87	Each	8
243332	32 x 35	12.00	Grade S	Dee	Safety Pin	32	35	52	100	76	5.26	Each	4

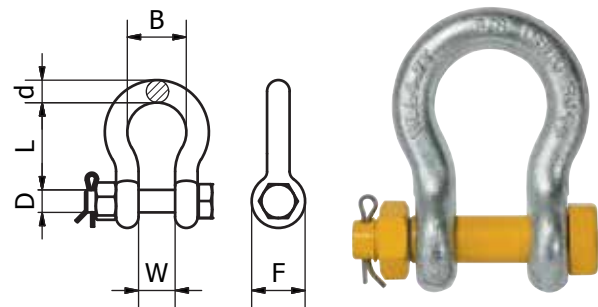
Yellow Pin Grade 'S' Safety Pin Shackles to AS2741

Anchor Bow Type - Capacities 2.0 - 55 tonne

Product Code	Size (mm)	WLL (t)	Type	Shape	Closing Method	DIA d (mm)	DIA PIN D (mm)	Inside Width W (mm)	Inside Length L (mm)	Width of Bow B (mm)	DIA Boss F (mm)	Approx Weight (kg)	UOM	Pack Qty
244313	13 x 16	2.00	Grade S	Bow	Safety Pin	13	16	21	48	33	33	0.44	Each	50
244316	16 x 19	3.20	Grade S	Bow	Safety Pin	16	19	27	61	43	40	0.79	Each	30
244319	19 x 22	4.70	Grade S	Bow	Safety Pin	19	19	32	72	51	48	1.26	Each	20
244322	22 x 25	6.50	Grade S	Bow	Safety Pin	22	25	37	84	58	54	1.88	Each	12
244325	25 x 29	8.50	Grade S	Bow	Safety Pin	25	29	43	95	68	60	2.78	Each	10
244329	29 x 32	9.50	Grade S	Bow	Safety Pin	29	32	46	108	74	67	3.87	Each	6
244332	32 x 35	12.00	Grade S	Bow	Safety Pin	32	35	52	119	83	76	5.26	Each	4
244335	35 x 38	13.50	Grade S	Bow	Safety Pin	35	38	57	133	92	84	6.94	Each	4
244338	38 x 41	17.00	Grade S	Bow	Safety Pin	38	41	60	146	98	92	8.79	Each	2
244345	45 x 51	25.00	Grade S	Bow	Safety Pin	44	51	73	178	127	110	14.99	Each	1
244351	51 x 57	35.00	Grade S	Bow	Safety Pin	51	57	83	197	146	127	20.65	Each	1
244363	63 x 70	55.00	Grade S	Bow	Safety Pin	63	70	105	267	184	152	41.05	Each	1



Dee Shackle



Bow Shackle



# Shackles

## Offshore Lifting Shackles (DNV Approved)



Bow Type – Capacities 0.33-120 tonne

Screw Pin #854 and Safety Pin #855

Standard: DNV 2.7-1 Type Approved , EN-13889 and U.S Fed. Spec. RR-C-271

Material: High Tensile Carbon Steel, Quenched and tempered, Grade 6

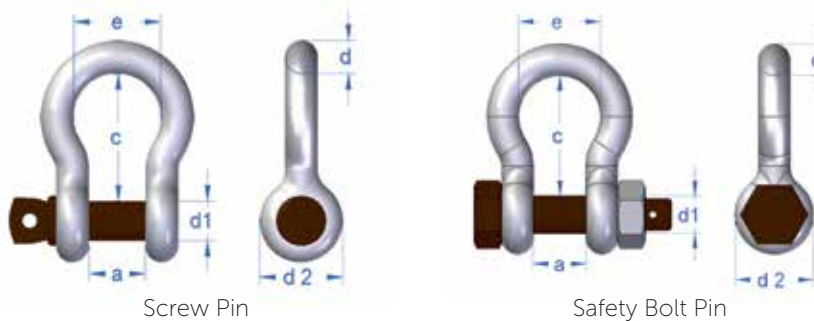
Finish: All parts hot dip galvanized, brown painted pins on top of galv.

Safety factor: 6:1

Documentation: Test certificate and traceable rawmaterial / inspection certificate acc. EN-10204 - 3.1.

Sizes 2-25 tonnes are supplied with DNV 2.7-1 Type Approval Certification.

Temperature: -20°C to 200°C



Screw Pin

Safety Bolt Pin

Product Code Screw Pin	Product Code Safety Bolt	WLL (t) 6:1	DIA Bolt d1 (mm)	DIA Body d (mm)	Inner Width a* (mm)	Inner length c* (mm)	Width of Bow e (mm)	Eye outer d2 (mm)	Screw Pin kgs/100 pcs	Safety Bolt kgs/100 pcs
A085405	-	0.33	6	5	10	22	16	13	2	-
A085406	A085506	0.5	8	6	12	29	20	16	6	7
A085408	A085508	0.75	10	8	13	32	21	20	11	13
A085409	A085509	1	11	9	16	36	26	22	15	17
A085411	A085511	1.5	13	11	18	43	29	26	21	25
A085413	A085513	2	16	13	21	47	33	33	37	42
A085416	A085516	3.25	19	16	27	60	42	40	65	70
A085419	A085519	4.75	22	19	31	71	51	47	110	120
A085422	A085522	6.5	25	22	37	84	58	50	150	170
A085425	A085525	8.5	28	25	43	95	68	58	220	250
A085428	A085528	9.5	32	28	46	108	74	64	310	340
A085432	A085532	12	35	32	52	119	83	72	420	480
A085435	A085535	13.5	38	35	57	132	89	74	600	700
A085438	A085538	17	42	38	60	146	98	84	800	900
A085445	A085545	25	50	45	74	178	127	105	1350	1500
A085452	A085552	35	57	50	83	197	138	127	1900	2100
-	A085556	42.5	65	57	95	222	160	140	-	2850
A085464	A085564	55	70	65	105	255	185	152	3800	
-	A085576	85	83	75	127	330	190	165	-	6200
-	**A085589	120	95	89	146	380	235	203	-	11000

\* Forging tolerance: +/- 5% on inside width/length.

\*\* Safety factor 5:1

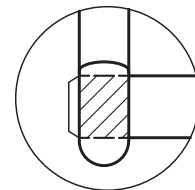
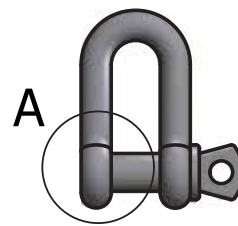
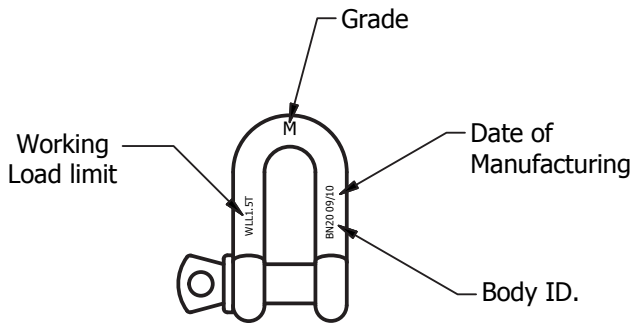
# Shackles



## Grade 'M' Shackles

Beaver Grade M Shackles are a rated shackle that comply with the requirements of AS 2741. Grade M shackles are commonly used in marine applications.

- › Only available in Dee configuration
- › Screw Pin type only – please see drawing A for more information
- › Because the pin holds more load than the body, the pin diameter is larger than the body diameter
- › The Body ID and date of Manufacture = the Batch ID

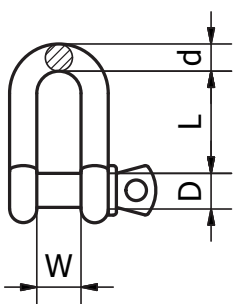


Detail A  
Screw Pin

### Grade 'M' Large Dee Shackles AS2741

Black - Capacities 0.5 - 20 tonne

Product Code	Size (mm)	WLL (t)	Type	Finish	Shape	Closing Method	DIA d (mm)	DIA PIN D (mm)	Inside Width W (mm)	Inside Length L (mm)	DIA Boss F (mm)	Approx Weight (kg)	UOM	Pack Qty
230010	10 x 13	0.50	Grade M	Self Colour	Dee	Screw	10	13	19	38	25	0.16	Each	200
230013	13 x 16	0.75	Grade M	Self Colour	Dee	Screw	13	16	28	54	32	0.35	Each	80
230016	16 x 19	1.50	Grade M	Self Colour	Dee	Screw	16	19	32	63	38	0.61	Each	50
230020	19 x 22	2.00	Grade M	Self Colour	Dee	Screw	19	22	38	73	44	1.10	Each	30
230023	22 x 25	3.00	Grade M	Self Colour	Dee	Screw	22	25	44	83	51	1.50	Each	25
230025	25 x 29	3.80	Grade M	Self Colour	Dee	Screw	25	29	51	95	57	2.14	Each	15
230028	29 x 32	5.00	Grade M	Self Colour	Dee	Screw	29	32	54	105	63	2.98	Each	10
230032	32 x 35	6.00	Grade M	Self Colour	Dee	Screw	32	35	60	114	70	3.10	Each	5
230035	35 x 38	7.00	Grade M	Self Colour	Dee	Screw	35	38	67	127	76	4.61	Each	5
230038	38 x 44	9.50	Grade M	Self Colour	Dee	Screw	38	44	70	137	89	8.01	Each	5
230042	41 x 48	11.00	Grade M	Self Colour	Dee	Screw	41	48	76	146	95	10.48	Each	3
230045	44 x 51	13.00	Grade M	Self Colour	Dee	Screw	44	51	83	156	102	12.65	Each	3
230050	51 x 57	16.00	Grade M	Self Colour	Dee	Screw	51	57	98	114	114	18.50	Each	1
230056	57 x 63	20.00	Grade M	Self Colour	Dee	Screw	57	63	108	210	127	28.00	Each	1



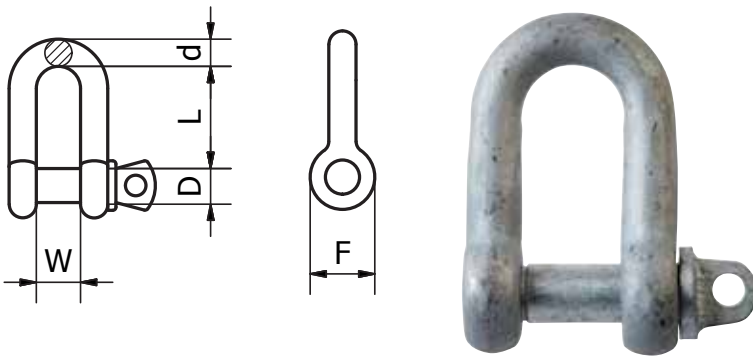
# Shackles

## Grade 'M' Grade Dee Shackles AS2741

Galvanised - Capacities 0.25 - 20 tonne



Product Code	Size (mm)	WLL (t)	Type	Finish	Shape	Closing Method	DIA d (mm)	DIA PIN D (mm)	Inside Width W (mm)	Inside Length L (mm)	DIA Boss F (mm)	Approx Weight (kg)	UOM	Pack Qty
230306	6 x 10	0.25	Grade M	Galvanised	Dee	Screw	6	10	13	25	19	0.061	Each	600
230310	10 x 13	0.50	Grade M	Galvanised	Dee	Screw	10	13	19	38	25	0.16	Each	200
230313	13 x 16	0.75	Grade M	Galvanised	Dee	Screw	13	16	28	54	32	0.35	Each	80
230316	16 x 19	1.50	Grade M	Galvanised	Dee	Screw	16	19	32	63	38	0.61	Each	50
230320	19 x 22	2.00	Grade M	Galvanised	Dee	Screw	19	22	38	73	44	1.10	Each	30
230323	22 x 25	3.00	Grade M	Galvanised	Dee	Screw	22	25	44	83	51	1.50	Each	25
230325	25 x 29	3.80	Grade M	Galvanised	Dee	Screw	25	29	51	95	57	2.14	Each	15
230328	29 x 32	5.00	Grade M	Galvanised	Dee	Screw	29	32	54	105	63	2.98	Each	10
230332	32 x 35	6.00	Grade M	Galvanised	Dee	Screw	32	35	60	114	70	3.10	Each	5
230335	35 x 38	7.00	Grade M	Galvanised	Dee	Screw	35	38	67	127	76	4.61	Each	5
230338	38 x 44	9.50	Grade M	Galvanised	Dee	Screw	38	44	70	137	89	8.01	Each	5
230342	41 x 48	11.00	Grade M	Galvanised	Dee	Screw	41	48	76	146	95	10.48	Each	3



# Shackles

## Commercial Grade Shackles



Commercial Grade Shackles are for general purpose use only and are available in both hot dipped galvanised and electro galvanised finishes. They are not produced to any standard.

- › Commercial Galvanised Shackles are available in both Dee and Bow type configuration
- › Commercial Electro Galvanised Shackles are available in Dee type configuration only
- › Screw Pin type only
- › Unlike other types of shackles, commercial shackles have the same diameter pin as the body
- › **Not suitable for lifting or towing**



### Commercial Hot Dipped Galvanised

Dee Shackle - Sizes 5mm - 25mm

Product Code	Size (mm)	Finish	Shape	Closing Method	Approx Weight (kg)	UOM	Pack Qty
200305	5	Galvanised	Dee	Screw	0.016	Each	500
200306	6	Galvanised	Dee	Screw	0.025	Each	500
200308	8	Galvanised	Dee	Screw	0.055	Each	200
200310	10	Galvanised	Dee	Screw	0.120	Each	200
200311	11	Galvanised	Dee	Screw	0.160	Each	150
200313	13	Galvanised	Dee	Screw	0.230	Each	100
200316	16	Galvanised	Dee	Screw	0.5	Each	50
200320	20	Galvanised	Dee	Screw	1.000	Each	30
200323	23	Galvanised	Dee	Screw	1.300	Each	20
200325	25	Galvanised	Dee	Screw	1.900	Each	15

**NOT TO BE USED FOR LIFTING**

### Commercial Hot Dipped Galvanised

Bow Shackle - Sizes 5mm - 25mm

Product Code	Size (mm)	Finish	Shape	Closing Method	Approx Weight (kg)	UOM	Pack Qty
205305	5	Galvanised	Bow	Screw	0.017	Each	500
205306	6	Galvanised	Bow	Screw	0.027	Each	500
205308	8	Galvanised	Bow	Screw	0.060	Each	200
205310	10	Galvanised	Bow	Screw	0.130	Each	200
205311	11	Galvanised	Bow	Screw	0.175	Each	150
205313	13	Galvanised	Bow	Screw	0.250	Each	100
205316	16	Galvanised	Bow	Screw	0.600	Each	50
205320	20	Galvanised	Bow	Screw	1.100	Each	30
205323	23	Galvanised	Bow	Screw	1.400	Each	20
205325	25	Galvanised	Bow	Screw	2.000	Each	15

**NOT TO BE USED FOR LIFTING**



# Shackles

## Commercial Electro Galvanised

Dee Shackle - Sizes 5mm - 25mm

Product Code	Size (mm)	Finish	Shape	Closing Method	Approx Weight (kg)	UOM	Pack Qty
200205	5	Electro Galvanised	Dee	Screw	0.015	Each	500
200206	6	Electro Galvanised	Dee	Screw	0.024	Each	500
200208	8	Electro Galvanised	Dee	Screw	0.053	Each	200
200210	10	Electro Galvanised	Dee	Screw	0.115	Each	200
200211	11	Electro Galvanised	Dee	Screw	0.153	Each	150
200213	13	Electro Galvanised	Dee	Screw	0.223	Each	100
200216	16	Electro Galvanised	Dee	Screw	0.490	Each	50
200220	20	Electro Galvanised	Dee	Screw	0.980	Each	30
200223	23	Electro Galvanised	Dee	Screw	1.260	Each	20
200225	25	Electro Galvanised	Dee	Screw	1.850	Each	15

**NOT TO BE USED FOR LIFTING**



# Rigging Screws & Turnbuckles

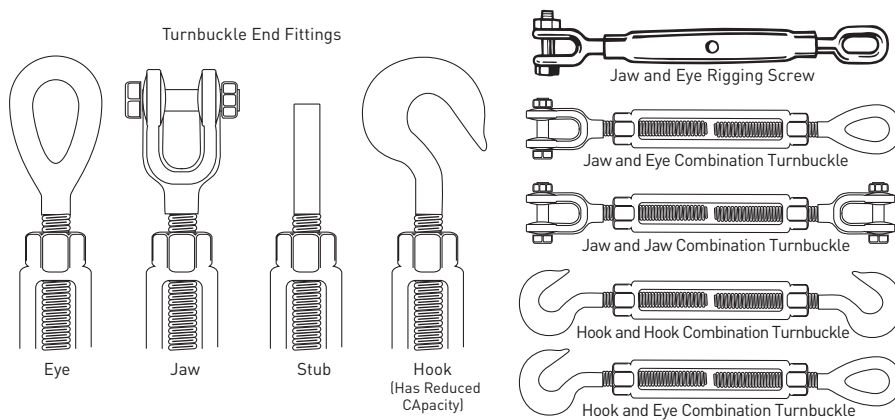


## Rigging Screws

### Rated Rigging Hardware

Our range of Rigging Hardware complies with a number of different standards. Each product has a working load limit (W.L.L) and is rated for lifting applications. Our range of quality rigging hardware is manufactured from the finest milling techniques and designed for both heavy industry use and general hardware applications.

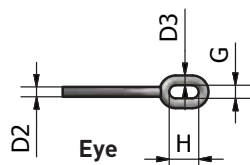
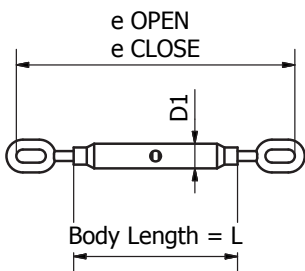
## Rigging Screws and Turnbuckles



### Eye and Eye Rigging Screws BS4429

Tested Hot Dipped Galvanised

Product Code	Size (mm)	Finish	e Open (mm)	e Close (mm)	L (mm)	D1 (mm)	D2 (mm)	D3 (mm)	G (mm)	H (mm)	WLL (t)	Pack Qty	Weight Per 100 (kg)	UOM
327310	10	Galvanised	359	259	152	21	10	8	11	25	0.3	100	38	Each
327313	13	Galvanised	465	369	229	25	13	11	14	36	0.5	50	75	Each
327316	16	Galvanised	523	393	228	27	16	14	18	40	0.75	30	130	Each
327320	20	Galvanised	563	413	229	34	20	17	25	55	1.25	20	185	Each
327324	24	Galvanised	786	589	356	42	24	20	26	57	2.5	10	380	Each
327333	33	Galvanised	830	645	381	51	33	25	34	64	5	5	680	Each
327338	38	Galvanised	870	655	407	57	38	27	38	75	6	3	1000	Each



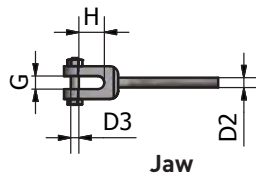
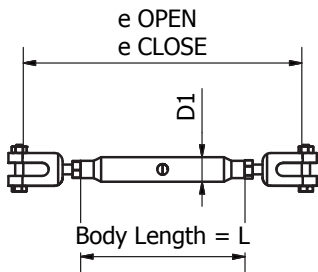
# Rigging Screws & Turnbuckles

## Jaw and Jaw Rigging Screws with Locknuts BS4429

Tested Hot Dipped Galvanised



Product Code	Size (mm)	Finish	e Open (mm)	e Close (mm)	L (mm)	D1 (mm)	D2 (mm)	D3 (mm)	G (mm)	H (mm)	WLL (t)	Pack Qty	Weight Per 100 (kg)	UOM
328310	10	Galvanised	349	235	152	21	10	8	11	21	0.3	100	44	Each
328313	13	Galvanised	524	343	229	25	13	9	19	35	0.5	50	85	Each
328316	16	Galvanised	550	361	229	27	16	13	22	51	0.75	30	140	Each
328320	20	Galvanised	550	387	229	34	20	16	22	48	1.25	20	220	Each
328324	24	Galvanised	822	556	356	42	24	22	32	65	2.5	10	450	Each
328333	33	Galvanised	872	604	381	51	33	24	38	76	5	5	640	Each
328338	38	Galvanised	949	670	407	57	38	33	47	90	6	10	1260	Each
328350	50	Galvanised	977	743	407	76	48	42	51	121	10	5	2400	Each





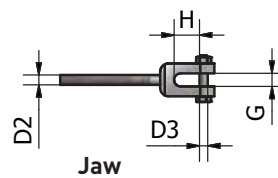
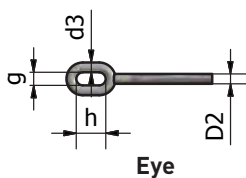
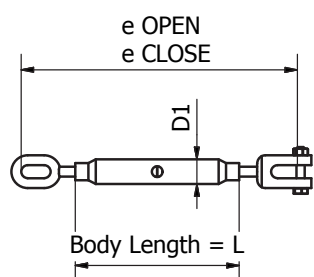
# Rigging Screws & Turnbuckles

## Jaw and Eye Rigging Screws BS4429

Tested Hot Dipped Galvanised



Product Code	Size (mm)	Finish	e Open (mm)	e Close (mm)	L (mm)	D1 (mm)	D2 (mm)	D3 (mm)	G (mm)	H (mm)	g (mm)	h (mm)	d3 (mm)	WLL (t)	Pack Qty	Weight Per 100 (kg)	UOM
329310	10	Galvanised	349	235	152	21	10	8	11	21	11	25	8	0.3	40	40	Each
329313	13	Galvanised	527	334	229	25	13	9	19	35	14	36	11	0.5	20	100	Each
329316	16	Galvanised	556	375	229	27	16	13	22	51	18	40	14	0.75	15	140	Each
329320	20	Galvanised	654	385	229	34	20	16	22	48	25	55	17	1.25	15	200	Each
329324	24	Galvanised	812	528	356	42	24	22	32	65	26	57	20	2.5	5	440	Each



# Rigging Screws & Turnbuckles

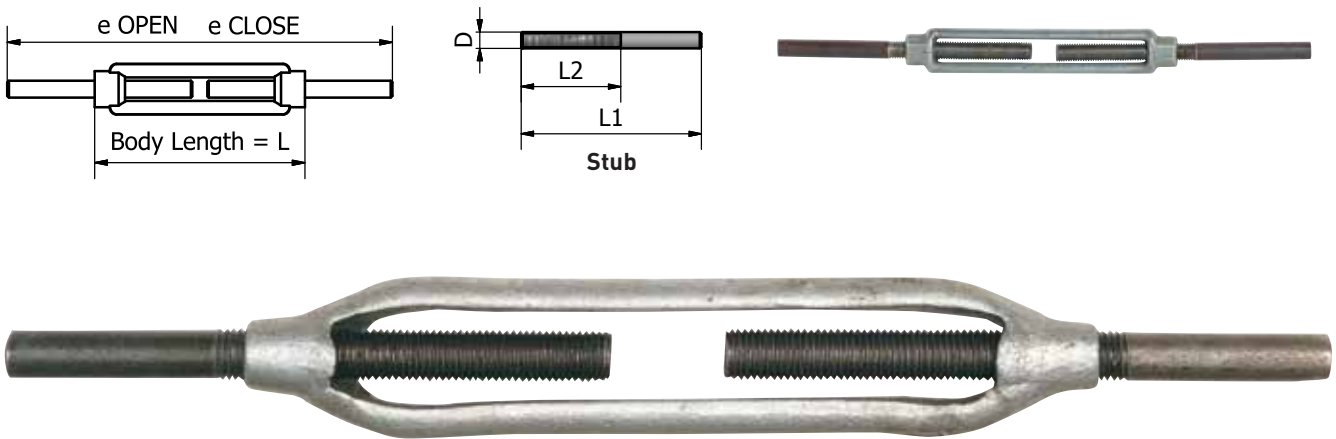
## Stub Turnbuckles



Forged Stub and Stub Heavy Duty Turnbuckles

Dipped Galvanised Body and Black Stubs Ends to BS716

Product Code	Chain Size (mm)	Finish	e Open (mm)	e Close (mm)	L (mm)	D (mm)	L1 (mm)	L2 (mm)	Pack Qty	Weight Per 100 (kg)	UOM
319013	13	Galvanised	475	335	191	12	165.5	95.5	10	80	Each
319016	16	Galvanised	495	365	204	16	174	102	10	120	Each
319020	20	Galvanised	500	365	217	20	187.5	108.5	8	200	Each
319025	25	Galvanised	535	400	232	24	205	116	4	312	Each
319032	32	Galvanised	554	400	252	33	200	126	2	550	Each
319032	32	Galvanised	680	525	255	32	260	135	3	461.76	Each



# Rigging Screws & Turnbuckles

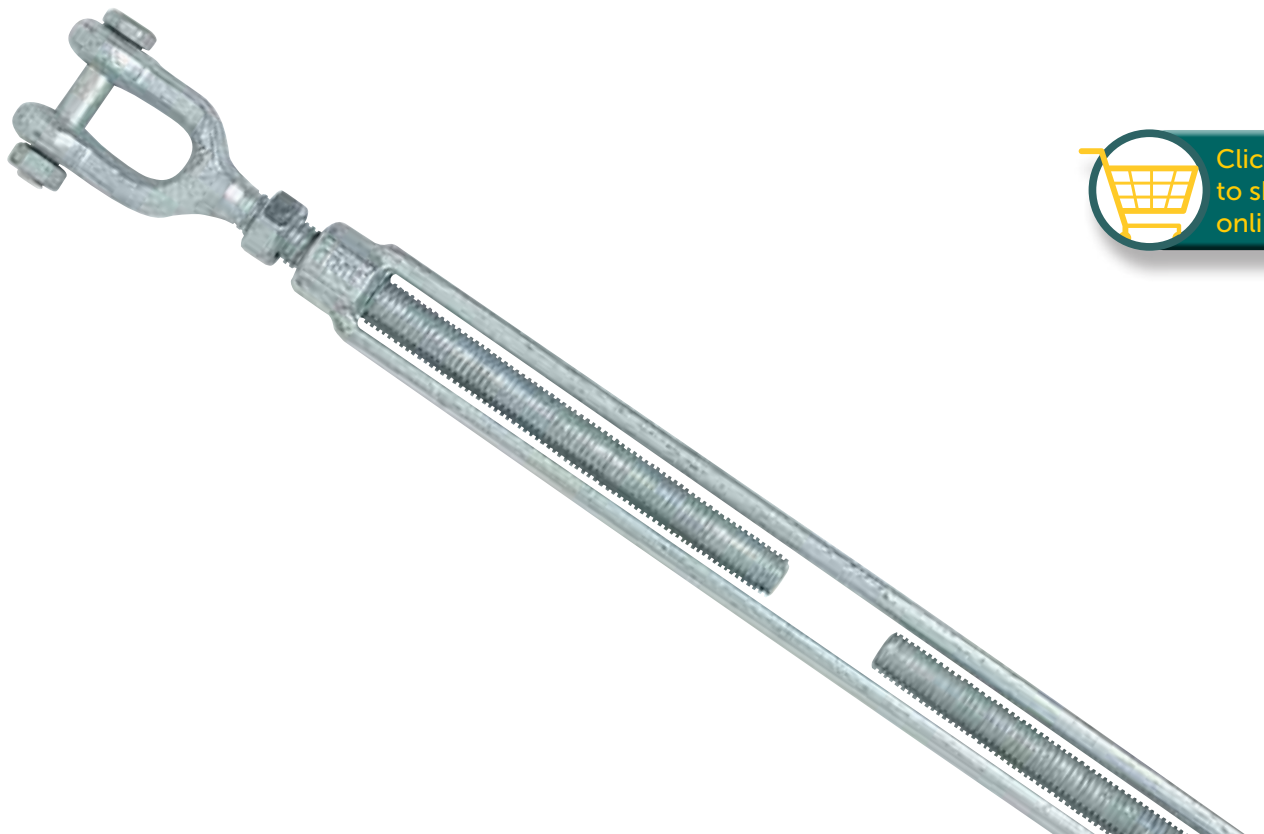
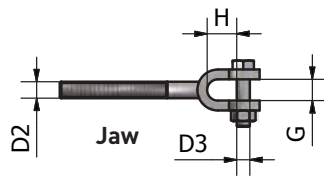
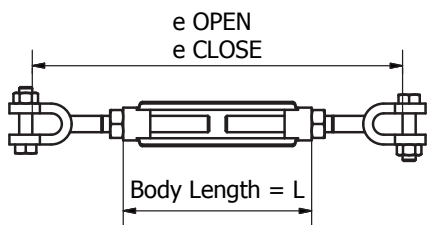
## Super Buckles



Super Buckles Jaw and Jaw with Lock Nuts. Federal Spec FF-T-791

Forged Hot Dipped Galvanised

Product Code	Size (mm)	Finish	e Open (mm)	e Close (mm)	L (mm)	D2 (mm)	D3 (mm)	G (mm)	H (mm)	WLL (t)	Pack Qty	Weight Per 100 (kg)	UOM
322412	12 x 305	Galvanised	780	485	305	12.7	9.53	16	46	900	20	109	Each
322416	16 x 305	Galvanised	676	459	229	15.88	12.70	21	60	1500	10	177.5	Each
322419	19 x 305	Galvanised	570	428	152	19.05	15.88	26	71	2300	8	298	Each
322422	22 x 305	Galvanised	873	580	305	22.23	19.05	26	71	3200	5	371	Each
322425	25 x 305	Galvanised	1221	777	457	25.4	22.23	31	82	4500	4	596.5	Each



# Rigging Screws & Turnbuckles



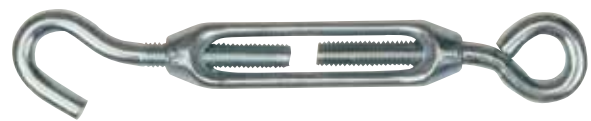
## Commercial Turnbuckles

The intended use of our commercial rigging hardware is for non-lifting applications, such as; guying and rigging of fences, pillars etc. In order to increase corrosion against the toughest environment, they are available in both hot dipped galvanised and zinc plated.

### Hook and Eye Commercial Turnbuckles

Cast Electro Galvanised

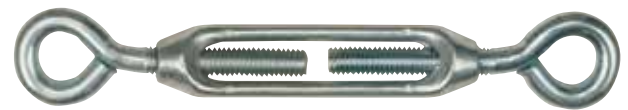
Product Code	Size (mm)	Finish	Pack Qty	Weight Per 100 (kg)	UOM
320205	5	Galvanised	500	15	Each
320206	6	Galvanised	200	16	Each
320208	8	Galvanised	150	24	Each
320210	10	Galvanised	100	39	Each



### Eye and Eye Commercial Turnbuckles

Cast Electro Galvanised

Product Code	Size (mm)	Finish	Pack Qty	Weight Per 100 (kg)	UOM
321205	5	Galvanised	500	15	Each
321206	6	Galvanised	200	16	Each
321208	8	Galvanised	150	24	Each
321210	10	Galvanised	75	39	Each



### Hook and Eye Commercial Turnbuckles

Forged Hot Dipped Galvanised

Product Code	Size (mm)	Finish	Pack Qty	Weight Per 100 (kg)	UOM
323206	6	Galvanised	250	8	Each
323208	8	Galvanised	150	14	Each
323210	10	Galvanised	100	26	Each
323213	13	Galvanised	40	50	Each
323216	16	Galvanised	25	100	Each
323220	20	Galvanised	15	168	Each
323223	22	Galvanised	8	246	Each
323225	25	Galvanised	8	256	Each



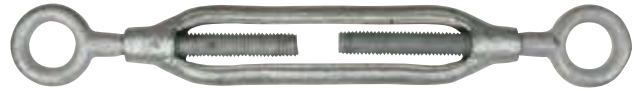
# Rigging Screws & Turnbuckles

## Eye and Eye Commercial Turnbuckles

Forged Hot Dipped Galvanised



Product Code	Size (mm)	Finish	Pack Qty	Weight Per 100 (kg)	UOM
324206	6	Galvanised	250	8	Each
324208	8	Galvanised	150	14	Each
324210	10	Galvanised	100	26	Each
324213	13	Galvanised	40	50	Each
324216	16	Galvanised	25	100	Each
324220	20	Galvanised	15	168	Each
324223	22	Galvanised	8	246	Each
324225	25	Galvanised	8	256	Each



## Forged Stub and Stub Commercial Turnbuckles

Hot Dipped Galvanised Body and Black Stub End

Product Code	Size (mm)	Finish	Pack Qty	Weight Per 100 (kg)	UOM
325010	10	Galvanised	100	26	Each
325013	13	Galvanised	40	50	Each
325016	16	Galvanised	25	100	Each
325020	20	Galvanised	15	168	Each
325023	23	Galvanised	8	246	Each
325025	25	Galvanised	8	256	Each



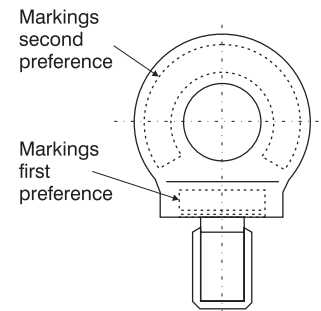
# Eye Bolts & Nuts

## Lifting Eye Bolts – Collared

### Lifting Eyebolts And Eyenuts

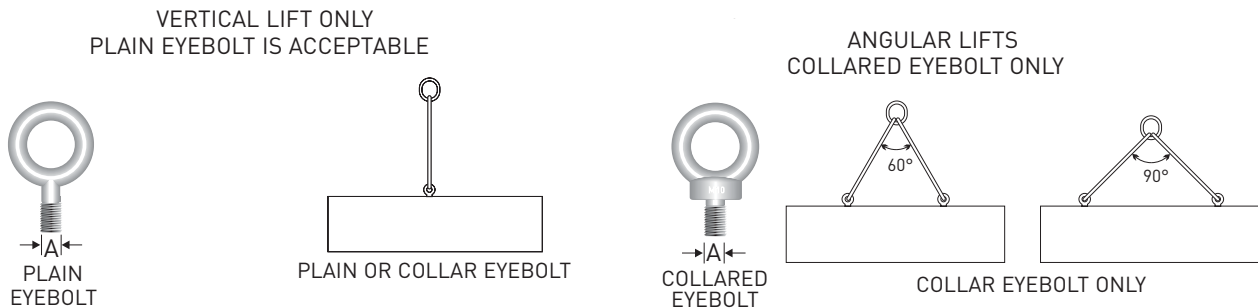
Our Lifting Eyebolts and Eyenuts come in a range of threads including BSW, UNC and Metric and are predominately used for lifting applications.

Eyebolts and Eyenuts both carry the markings as shown.



It is recommended that all eyebolts used for lifting be of forged steel and be equipped with shoulders or collars.

### Lifting Eyebolts and Eyenuts



The Australian Standard covering collared eyebolts is AS 2317-1984.  
NB: Only use rated eyebolts for lifting.

### WLL for Class 3 load application as specified by AS 1418, Part 1

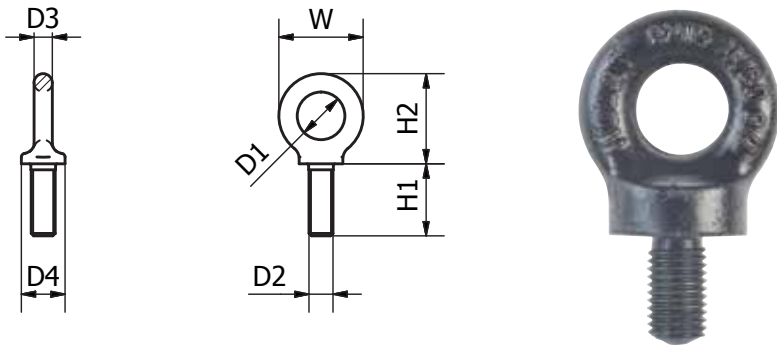
1	2	3	4	5	6	7
Nominal size of eyebolt	Single Eyebolt		Perpendicular	Pair of eyebolts (see note)		
	Axial	Trunnion-type mounting		Included angle 30°	Included angle 60°	Included angle 90°
M12	0.32	0.08	0.16	0.40	0.26	0.16
M16	0.63	0.16	0.32	0.79	0.50	0.32
M20	1.25	0.31	0.63	1.60	1.00	0.63
M24	2.00	0.50	1.00	2.50	1.60	1.00
M30	3.20	0.80	1.60	4.00	2.60	1.60
M36	6.00	1.30	2.60	6.30	4.00	2.50
M42	6.30	1.60	3.20	7.90	5.00	3.20
M48	8.00	2.00	4.00	10.00	6.40	4.00
M56	12.00	3.00	6.00	15.00	9.60	6.00
M64	16.00	4.00	8.00	20.00	13.00	8.00
M72	20.00	6.00	10.00	25.00	16.00	10.00
	Reduction factor for single eyebolt					
	1	0.25	0.25	0.63	0.40	0.25

# Eye Bolts & Nuts

## Lifting Collared Eye Bolts with B.S.W Thread BS529

Conforms to AS2317 - 1984.

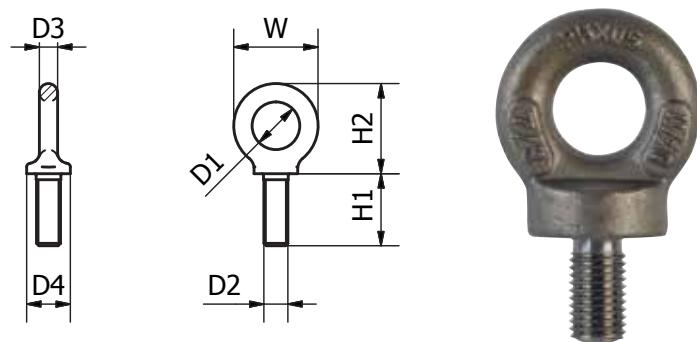
Product Code	Size Inches	Finish	W (mm)	H1 (mm)	H2 (mm)	D1 (mm)	D2 (mm)	D3 (mm)	D4 (mm)	WLL (t)	Pack Qty	Weight Per 100 (kg)	UOM
358010	3/8"	Self Colour	32	17	35	14	9.53	9	21	0.25	400	5.5	Each
358013	1/2"	Self Colour	41	22	42.5	19	12.70	11	28	0.4	150	14.6	Each
358016	5/8"	Self Colour	52	28	58	24	15.88	14	36	0.8	60	30	Each
358019	3/4"	Self Colour	62	33	69	28	19.05	17	43	1.6	40	52.5	Each
358022	7/8"	Self Colour	73	39	80.5	33	22.23	20	50	2	20	90	Each
358025	1"	Self Colour	82	44	92	38	25.40	22	57	2.5	15	106	Each
358028	1-1/8"	Self Colour	92	50	103	42	28.58	25	64	3.5	10	160	Each
358032	1-1/4"	Self Colour	104	55	116	48	31.75	28	71	5	6	260	Each
358038	1-1/2"	Self Colour	123	67	137.5	57	38.10	33	85	7	4	350	Each



## Lifting Collared Eye Bolts with UNC Thread BS529

Conforms to AS2317 - 1984.

Product Code	Size Inches	Finish	W (mm)	H1 (mm)	H2 (mm)	D1 (mm)	D2 (mm)	D3 (mm)	D4 (mm)	WLL (t)	Pack Qty	Weight Per 100 (kg)	UOM
360010	3/8"	Self Colour	33	9	36	15	9.53	9	22	0.25	400	6	Each
360012	1/2"	Self Colour	44	11	48	20	12.70	11	29	0.4	150	15	Each
360016	5/8"	Self Colour	52	14	58	24	15.88	14	36	0.8	60	27	Each
360019	3/4"	Self Colour	66	17	73	30	19.05	18	45	1.6	40	54	Each
360022	7/8"	Self Colour	77	20	84	35	22.23	21	52	2	40	85	Each
360025	1"	Self Colour	85	22	94	39	25.40	23	58	2.5	25	113	Each
360032	1-1/4"	Self Colour	106	28	117	48	31.75	29	72	5	6	237	Each
360038	1-1/2"	Self Colour	118	33	131	54	38.10	32	81	7	6	312	Each
360044	1-3/4"	Self Colour	148	39	164	68	44.45	40	101	8	6	627	Each
360050	2"	Self Colour	168	44	186	76	50.80	46	115	10	4	958	Each



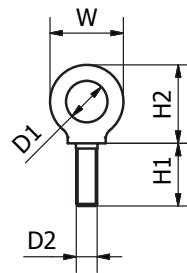
# Eye Bolts & Nuts

## Lifting Collared Eye Bolts with Metric Threads BS4278

Conforms to AS2317 - 1984.

"Gold" Zinc Dichromate Finish

Product Code	Size (mm)	Finish	W (mm)	H1 (mm)	H2 (mm)	D1 (mm)	D2 (mm)	D3 (mm)	D4 (mm)	WLL (t)	Pack Qty	Weight Per 100 (kg)	UOM
359008	8	Zinc Dichromate	33	18	36	15	8	18	22	0.15	400	6	Each
359010	10	Zinc Dichromate	33	18	36	15	10	18	22	0.25	180	6	Each
359012	12	Zinc Dichromate	33	18	36	15	12	18	22	0.4	110	6	Each
359016	16	Zinc Dichromate	44	23	48	20	16	24	29	0.8	80	15	Each
359020	20	Zinc Dichromate	59	32	65	27	20	32	40	1.6	45	38	Each
359022	22	Zinc Dichromate	64	35	73	30	22	34	45	1.6	30	54	Each
359024	24	Zinc Dichromate	77	40	84	35	24	42	52	2.5	10	85	Each
359030	30	Zinc Dichromate	96	51	106	44	30	52	65	4	4	162	Each
359036	36	Zinc Dichromate	118	63	131	54	36	64	81	6.3	4	312	Each



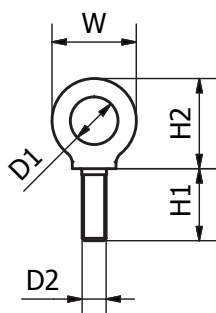
## Lifting Eye Bolts – Shouldered

### Metric Shouldered Eye Bolts to DIN580

Conforms to AS2317 - 1984.

"Gold" Zinc Dichromate Finish

Product Code	Size (mm)	Finish	W (mm)	H1 (mm)	H2 (mm)	D1 (mm)	D2 (mm)	D3 (mm)	D4 (mm)	WLL (t)	Pack Qty	Weight Per 100 (kg)	UOM
359108	8	Zinc Dichromate	36	13	36	20	8	8	20	0.14	400	6	Each
359110	10	Zinc Dichromate	45	17	45	25	10	10	25	0.23	180	11	Each
359112	12	Zinc Dichromate	54	20.5	52	30	12	12	30	0.34	110	18	Each
359116	16	Zinc Dichromate	63	27	61	35	16	14	35	0.7	80	28	Each
359120	20	Zinc Dichromate	72	30	70	40	20	16	40	1.2	50	45	Each
359122	22	Zinc Dichromate	81	35	80	45	22	18	45	1.5	30	67	Each
359124	24	Zinc Dichromate	90	36	90	50	24	20	50	1.8	20	87	Each
359130	30	Zinc Dichromate	108	45	110	60	30	24	65	3.6	4	166	Each
359136	36	Zinc Dichromate	126	54	130	70	36	28	75	5.1	4	265	Each





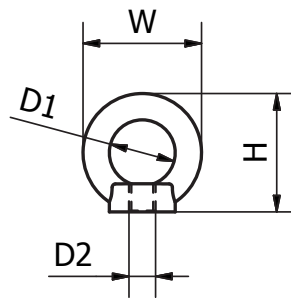
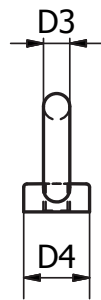
# Eye Bolts & Nuts

## Lifting Eye Nuts – Shouldered

Metric Shouldered Eye Nuts to DIN582

“Gold” Zinc Dichromate Finish

Product Code	Size (mm)	Finish	W (mm)	H (mm)	D1 (mm)	D2 (mm)	D3 (mm)	D4 (mm)	WLL (t)	Pack Qty	Weight Per 100 (kg)	UOM
359208	8	Zinc Dichromate	36	36	20	8	8	20	0.14	400	5	Each
359210	10	Zinc Dichromate	45	45	25	10	10	25	0.23	180	9	Each
359212	12	Zinc Dichromate	54	52	30	12	12	30	0.34	110	16	Each
359216	16	Zinc Dichromate	63	61	35	16	14	35	0.7	80	24	Each
359220	20	Zinc Dichromate	72	70	40	20	16	40	1.2	50	36	Each
359222	22	Zinc Dichromate	81	80	45	22	18	45	1.5	30	58	Each
359224	24	Zinc Dichromate	90	90	50	24	20	50	1.8	20	72	Each



## Links, Hooks and Swivels

### Chain Split Links

#### Chain Split Links

Electro Galvanised

Product Code	Size (mm)	Finish	Pack Qty	Weight Per 100 (kg)	UOM
420103	3.5	Electro Galvanised	5000	0.41	Each
420105	5	Electro Galvanised	1500	1.72	Each
420106	6	Electro Galvanised	800	3	Each
420108	8	Electro Galvanised	400	6.9	Each
420110	10	Electro Galvanised	200	12	Each
420113	13	Electro Galvanised	120	23	Each



#### Chain Split Links

Hot Dipped Galvanised

Product Code	Size (mm)	Finish	Pack Qty	Weight Per 100 (kg)	UOM
420303	3.5	Galvanised	5000	0.41	Each
420305	5	Galvanised	1500	1.72	Each
420306	6	Galvanised	800	3	Each
420308	8	Galvanised	400	6.9	Each
420310	10	Galvanised	200	12	Each
420313	13	Galvanised	120	23	Each



### Snap Hooks, Quick Links

#### Snap Hooks

Product Code	Size (mm)	Finish	Pack Qty	Weight Per 100 (kg)	UOM
425204	4	Electro Galvanised	2500	1.4	Each
425205	5	Electro Galvanised	1400	1.6	Each
425206	6	Electro Galvanised	1000	2.7	Each
425207	7	Electro Galvanised	700	4.4	Each
425208	8	Electro Galvanised	400	6.5	Each
425210	10	Electro Galvanised	200	12.7	Each



#### Quick Links

Product Code	Size (mm)	Finish	Pack Qty	Weight Per 100 (kg)	UOM
420603	3.5	Galvanised	3000	0.908	Each
420605	5	Galvanised	1250	2.27	Each
420606	6	Galvanised	800	3.632	Each
420608	8	Galvanised	400	8.172	Each



# Links, Hooks and Swivels

## Commercial Mooring Swivels

Eye and Bow Type

Product Code	Size (mm)	Finish	Pack Qty	Weight Per 100 (kg)	UOM
330306	6	Galvanised	250	8.4	Each
330308	8	Galvanised	150	16.2	Each
330310	10	Galvanised	80	27.8	Each
330313	13	Galvanised	35	48.3	Each
330316	16	Galvanised	25	85.0	Each
330320	20	Galvanised	12	134.1	Each
330323	23	Galvanised	10	200.0	Each
330325	25	Galvanised	5	315.0	Each
330328	28	Galvanised	5	640.0	Each



## Beaver Commercial Chain Swivels

Bow and Bow Type

Product Code	Size (mm)	Finish	Pack Qty	Weight Per 100 (kg)	UOM
335306	6	Galvanised	250	6.0	Each
335308	8	Galvanised	150	13.5	Each
335310	10	Galvanised	80	25.0	Each
335313	13	Galvanised	35	56.0	Each
335316	16	Galvanised	25	120.0	Each
335320	20	Galvanised	12	180.0	Each
335323	23	Galvanised	10	250.0	Each
335325	25	Galvanised	5	410.0	Each



# Lifting and Lashing Points

## Bolt-On Lifting and Lashing Points

B-Alloy-V Bolt-On Rotating Lifting Lugs (Load Rings) – Grade 100

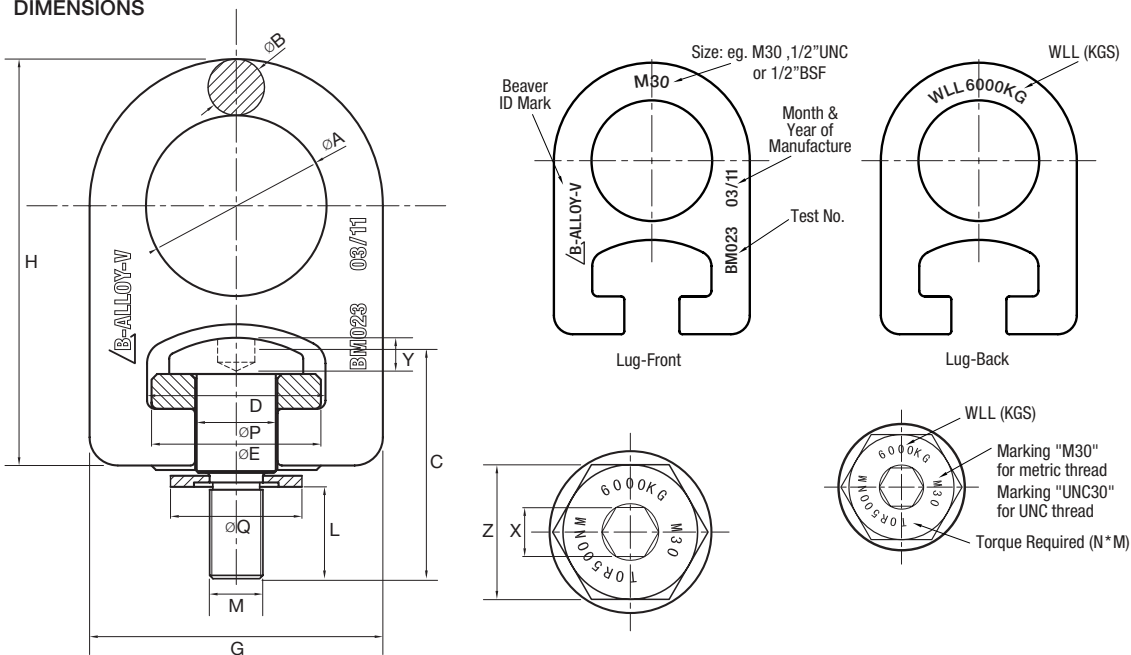
Available in seven capacities from 1 to 10 tonnes.

### Features

- > High strength lifting or lashing point
- > Has full working load limit at all angles and rotations
- > Easily attached to the required lifting base or item
- > Lifting lug manufactured from Grade 100 steel, quenched and tempered
- > 100% Magnetically Crack Inspected, (MCI)
- > Durable powder coated finish on the lifting lug
- > Test certificate available.



### DIMENSIONS



Product Code	WLL (t)	Tread Size (mm)	Torque N * M	L (mm)	A (mm)	B (mm)	C (mm)	D (mm)	E (mm)	H (mm)	G (mm)	P (mm)	Q (mm)	X (mm)	Y (mm)	Z (mm)	Weight (kg)
BRLP-M12	1.0	M12	100	33	35.6	11.2	60	35.3	33.5	80.5	60.5	15.6	31.2	8.03	5	25.4	0.4
BRLP- 1/2UNC	1.0	1/2UNC	100	33	35.6	11.2	60	35.3	33.5	80.5	60.5	15.6	31.2	8.03	5	25.4	0.4
BRLP-M16	1.5	M16	150	33	35.6	11.2	60	35.3	33.5	80.5	60.5	15.6	31.2	8.03	5	25.4	0.4
BRLP-M20	2.5	M20	300	33	61	19.1	82.6	60.2	57.2	137	103	26.7	53.3	15.9	9.4	44.5	1.8
BRLP-M24	4	M24	400	37	61	19.1	82.6	60.2	57.2	137	103	26.7	53.3	15.0	9.4	44.5	1.8
BRLP-M30	6	M30	500	50	81.3	25.4	110.8	80.3	76.2	183	137.2	35.6	71.1	22.1	15	60.3	4.1
BRLP-M36	8	M36	800	54	81.3	25.4	110.8	80.3	76.2	183	137.2	35.6	71.1	22.1	15	60.3	4.1
BRLP-M42	10	M42	1000	63	101.6	31.8	139.4	100.3	95.3	229	171.5	44.5	88.9	27.1	18	76.2	9.0
BRLP-1 5/8 UNC	10	1 5/8 UNC	1000	63	101.6	31.8	139.4	100.3	95.3	229	171.5	44.5	88.9	27.1	18	76.2	9.0

Note: UNC and BSF thread sizes available on request.

# Lifting and Lashing Points



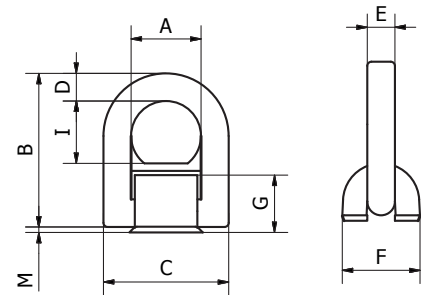
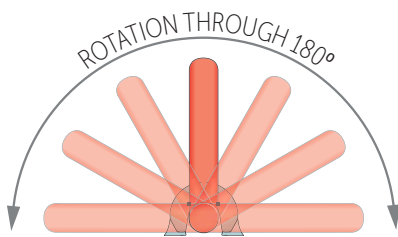
## Grade 100 Weld-on Lifting and Lashing Rings

### B-Alloy-V Weld-on Lifting and Lashing Rings - Grade 100

Suitable for the mining, offshore exploration, road or rail transport and maritime industries.

#### Features

- › Grade 100 Quality Alloy Steel, quenched and tempered.
- › Offers a full working load limit at all angles.
- › Extremely high strength attachment
- › Lifting ring and welding block are both marked for accurate traceability.
- › 100% magnetically crack inspected (MPI).
- › Easily welded into required position with the aid of height lugs on the weld block.
- › Lifting ring has durable powder coated baked enamel finish.
- › Test certificate available.



Product Code	WLL (kg)	A (mm)	B (mm)	C (mm)	D (mm)	E (mm)	F (mm)	G (mm)	I (mm)	M (mm)	Weld (mm) HV+aL	Weight (kg)
BALPV015	1500	38	79	66	14	13.5	32	25	31	2	HV5+3	0.40
BALPV015	4000	51	102	87	18	16.5	42	32	40.5	2	HV7+3	0.60
BALPV040	6700	67	138	115	24	22.5	61	44	55	4	HV8+3	0.90
BALPV067	10000	67.5	142	129	26.5	57.5	75	53	57.5	4	HV12+4	2.0
BALPV100	10000	67.5	142	129	26.5	57.5	75	53	57.5	4	HV16+4	3.0
BALPV160	16000	100	215	190	40	26	95	69	85	5	HV25+6	6.9

# Lifting and Lashing Points

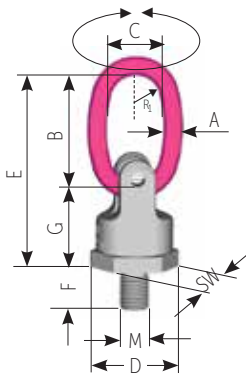
## RUD Power Point PP-B Ring Connection

360° swivelling/180° pivoting double ball bearing

### Features

- › Easy identification of WLL
- › Loadable in any direction. Safety factor 4 : 1
- › Double ballbearing for free turning and soft winding
- › All parts 100 % crack detected
- › Max. load limit at smallest thread diameter
- › Variable screw lengths available
- › Can also be used for through holes
- › Can be turned under full load even in a 90° position from the bolt centre line
- › **Not suitable for permanent swivelling under full load.**

**RUD**®

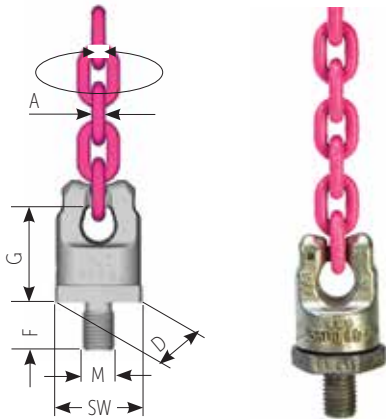


PP-B – the ring connection for hook assemblies

Product Code	Type	WLL (t)	A (mm)	B (mm)	C (mm)	D (mm)	E (mm)	F (mm)	G (mm)	M (mm)	SW (mm)	R <sub>1</sub> (mm)	Weight (kg)
7989522	PP-B-0.63t-M12	0.63	9	65	35	40	105	18	41	12	36	15	0.35
7989523	PP-B-1.5t-M16	1.5	11	65	35	46	115	24	50	16	41	15	0.6
7989081	PP-B-2.5t-M20	2.5	13	75	40	61	135	30	61	20	55	18	1.1
7989082	PP-B-4t-M24	4.0	16	95	45	78	172	36	77	24	70	20	2.1
7989524	PP-B-5t-M30	5.0 (6.7)	21	130	60	95	223	45	93	30	85	25	4.5
7989083	PP-B-8t-M36	8.0 (10)	24	140	65	100	242	54	102	36	90	28	6.1

( ) increased WLL at axial load direction

# Lifting and Lashing Points



PP-VIP – for direct chain connection of the VIP chain

Product Code	Product Code	WLL (t)	A VIP-Chain connection	D (mm)	F (mm)	G (mm)	M (mm)	SW (mm)	Weight (kg)
7989525	PP-VIP4-0.63t-M12	0.63	4	40	18	41	12	36	0.25
7989526	PP-VIP6-1.5t-M16	1.5	6	46	25	50	16	41	0.45
7989527	PP-VIP8-2.5t-M20	2.5	8	61	30	61	20	55	0.95
7989528	PP-VIP10-4t-M24	4.0	10	78	36	77	24	70	2.2
7989529	PP-VIP13-5t-M30	5.0 (6.7)	13	95	45	93	30	85	3.5
7989530	PP-VIP16-8t-M36	8.0 (10)	16	100	54	102	36	90	5.2

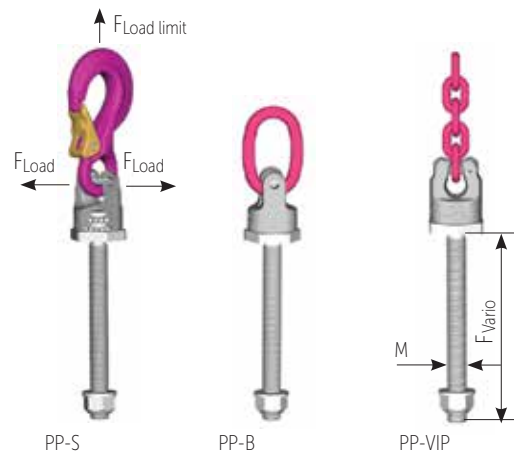
( ) increased WLL at axial load direction

## PP-S/PP-B/PP-VIP

– all types in special thread lengths available

Please indicate type, thread size and  $F_{\text{vario}}$ !

Type	WLL (t)	Thread size	$F_{\text{vario}}$ Max. (mm)	Thread Size	$F_{\text{vario}}$ max. (mm)
So-PP-S/PP-B/PP-VIP	0.6 (0.63)	M 12	140	1/2"-13UNC	45
So-PP-S/PP-B/PP-VIP	1.0 (1.5)	M 14	65	–	–
So-PP-S/PP-B/PP-VIP	1.3 (1.5)	M 16	180	5/8"-11UNC	55
PP-S/PP-B/PP-VIP	2.5	M 20	200	–	–
So-PP-S/PP-B/PP-VIP	3.5 (4)	M 24	255	1"-8UNC	74
So-PP-S/PP-B/PP-VIP	5.0 (6.7)	M 30	330	1 1/4"-7UNC	91
So-PP-S/PP-B/PP-VIP	8.0 (10)	M 36	300	–	–



Warranty can only be guaranteed with originally assembled RUD components and chains!

$F_{\text{vario}}$  with washer and 100% crack detected nut

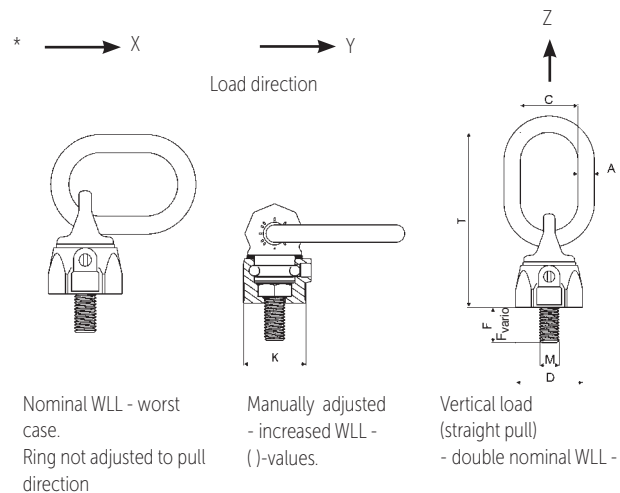
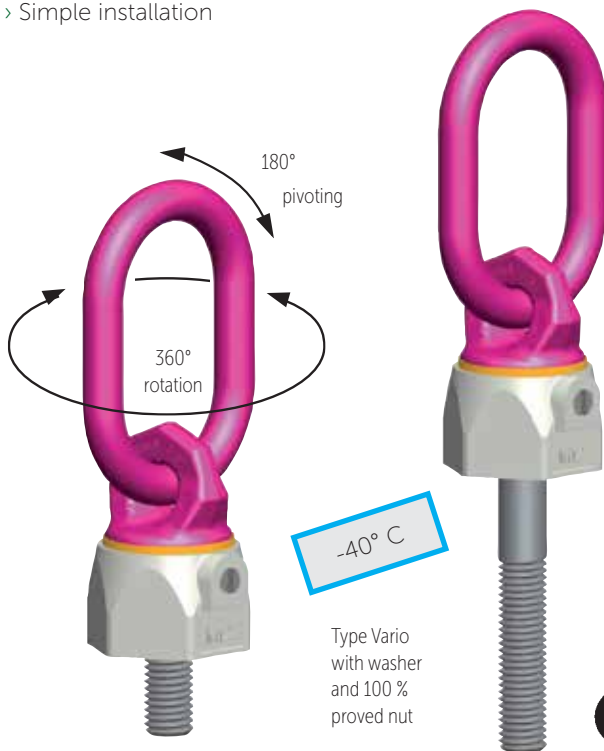
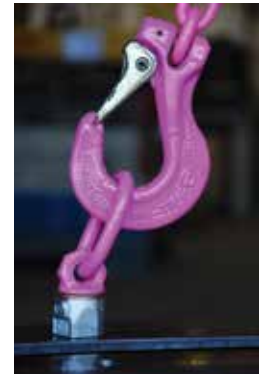
# Lifting and Lashing Points

## RUD Load Rings – VWBG-V

– 360° swivelling/180° pivoting

### Features

- › Loadable in any direction. Safety factor 4:1
- › Swivels under load in vertical direction
- › Not suitable for permanent swivelling under full load, especially in 90° direction
- › Simple installation
- › Variable lengths (Vario) available
- › Can also be used for through holes
- › VWBG-V and VWBG are also available with Imperial thread
- › Turning without jerk due to additional bush bearing washer.



Product Code Stand	Product Code Vario with washer and nut	Type	WLL (t)	A (mm)	C (mm)	D (mm)	F <sub>stand.</sub> (mm)	F <sub>vario</sub> (mm)	K (mm)	M (mm)	T (mm)	X (mm)
7103720	8600330	VWBG-V 0.3 M8	0.3(0.4)	8	29	30	13	8-102	28	8	76	18
7103715	8600331	VWBG-V 0.45 M10	0.45(0.6)	8	29	36	17	10-122	30	10	78	19
7100180	8600332	VWBG-V 0.6 M12	0.6(0.7)	10	35	42	21	12-140	36	12	107	19
-	8600337	VWBG-V 1.0 M14	1.0(1.25)	13	38	48	21	14-65	41	14	113	-
7100430	8600333	VWBG-V 1.3 M16	1.3(1.5)	13	38	48	25	16-180	41	16	113	28
-	8600338	VWBG-V 1.8 M18	1.8(2.0)	13	35	64	27	18-83	55	18	137	-
7100800	8600334	VWBG-V 2.0 M20	2.0(2.5)	13	35	64	33	20-223	55	20	137	30
-	8600334	VWBG-V 2.0 M22	2.0(4.0)	13	35	62	33	22-94	55	22	137	-
7100640	8600335	VWBG-V 3.5 M24	3.5(4.0)	18	40	81	40	24-255	70	24	173	25
-	8600339	VWBG-V 3.5 M27	3.5(4.0)	18	40	81	40	27-92	70	27	173	-
7100650	8600336	VWBG-V 5.0 M30	5.0(6.0)	22	50	99	50	30-330	85	30	221	32



# Lifting and Lashing Points



## RUD Load Rings Bolted – VWBG

– 360° swivelling/180° pivoting – with a ball bearing

For heavy loads which have to be turned and swivelled.

### Features

- > With ball bearings. Swivels under full load
- > Not suitable for permanent swivelling under full load, especially in 90° direction
- > Loadable in any direction. Safety factor 4:1.



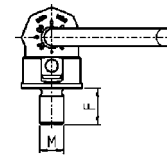
\* → X



Nominal WLL - worst case. Ring not adjusted to pull direction

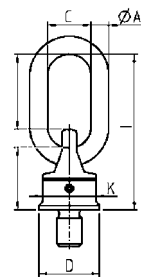
→ Y

Load direction



Manually adjusted - increased WLL - ( )-values.

Z



Vertical load (straight pull)

Product Code Stand	Product Code Vario with washer and nut	Type	WLL (t)	A (mm)	C (mm)	D (mm)	F <sub>stand.</sub> (mm)	F <sub>vario</sub> (mm)	K (mm)	M (mm)	T (mm)
7999059	8600451	VWBG 8(10) M36-39	8(10)	22	50	90	54	36-300	80	36-39	208
7999044	8600452	VWBG 12(13) M42-45	12(13)	26	65	98	63	42-300	85	42-45	235
7900455	-	VWBG 12(15) M45	12(15)	26	65	98	67	-	85	45	235
7999045	8600453	VWBG 13(16) M48-52	13(16)	26	65	98	68	48-300	85	48-52	235
7901081	-	VWBG 14(20) M52	14(20)	32	70	120	78	-	95	52	274
7999004	8600454	VWBG 16(22) M56-62	16(22)	32	70	120	84	56-300	95	56-62	274
7999043	8600455	VWBG 16(25) M64-76	16(25)	32	70	120	94	64-300	95	64-76	274
7900097	8600456	VWBG 31.5(40) M72-76	31.5(40)	46	90	170	108	72-300	145	72-76	338
7900100	8600457	VWBG 35(48) M80-85	35(48)	46	90	170	120	80-300	145	80-85	338
7995545	8600157	VWBG 40(50) M90-150	40(50)	46	90	170	135	90-300	145	90-150	338

Please specify your requested dimensions F and M

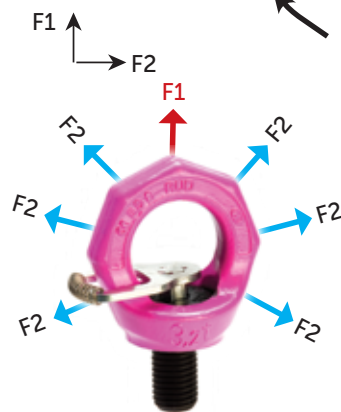
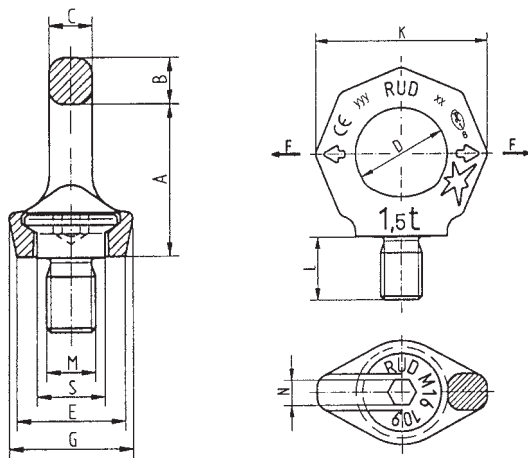
# Lifting and Lashing Points

## RUD VRS-F Starpoint Eyebolts

1 to 32 tonne

### Features

- › Multi directional threaded design
- › Can be used for both axial and angular loading
- › Load ratings up to six times the capacity of collared eyebolts
- › Unique key design for easy fitting
- › Adjusts to direction of pull
- › Available in metric and UNC thread sizes.



Product Code VRS-F	Type	F1 (t)	F2* (t)	Weight (kg)	A (mm)	B (mm)	C (mm)	D (mm)	E (mm)	G (mm)	K (mm)	L (mm)	M (mm)	N (mm)	S (mm)
79 00 906	VRS-M6	0.5	0.1	0.06	27	9	7	20	23	28	37	9	6	6	13
85 00 911	VRS-M8	1.0	0.3	0.1	34	11	8.5	25	25	32	47	12	8	6	16
71 04 029	VRS-M10	1.0	0.4	0.1	34	11	8.5	25	25	32	47	15	10	6	16
71 01 313	VRS-M12	2.0	0.75	0.2	42	13	10	30	30	34	56	18	12	8	20
71 01 314	VRS-M16	4.0	1.5	0.3	49	15	14	35	35	40	65	24	16	10	23.5
71 01 315	VRS-M20	6.0	2.3	0.5	57	17	16	40	42	50	75	30	20	12	29
71 01 316	VRS-M24	8.0	3.2	0.9	70	21	19	48	50	60	90	36	24	14	35
71 01 317	VRS-M30	12.0	4.5	1.7	86	26	24	60	60	75	112	45	30	17	44
79 84 201	VRS-M36	16.0	7.0	2.9	103	32	29	72	75	90	135	54	36	22	53
79 84 202	VRS-M42	24.0	9.0	4.6	120	38	34	82	85	105	158	63	42	24	61.5
79 84 203	VRS-M48	32.0	12.0	7.0	137	43	38	94	100	120	180	72	48	27	70.5
-	VRS-1/4"-20UNC	0.5	0.1	0.06	27.5	9	7	20	23	27	37	9	1/4"	7/32"	13
79 99 106	VRS-5/16"-18UNC	1.0	0.3	0.119	34	11	8.5	25	25	28	47	12	5/16"	1/4"	14
71 04 480	VRS-3/8"-16UNC	1.0	0.4	0.1	34	11	8.5	25	25	28	47	15	3/8"	1/4"	15
	VRS-7/16"-14UNC	1.0	0.4	0.119	34	11	8.5	25	25	28	47	15	3/8"	1/4"	15
71 04 481	VRS-1/2"-13UNC	2.0	0.75	0.2	42	13	10	30	30	34	56	18	1/2"	5/16"	18
71 04 482	VRS-5/8"-11UNC	4.0	1.5	0.3	49	15	14	35	35	40	65	24	5/8"	3/8"	22
71 04 483	VRS-3/4"-10UNC	6.0	2.3	0.5	57	17	16	40	40	50	75	30	3/4"	1/2"	27.5
71 04 484	VRS-7/8"-9UNC	6.0	2.3	0.6	57	17	16	40	40	50	75	32	7/8"	1/2"	27.5
71 04 485	VRS-1"-8UNC	8.0	3.2	0.9	69	21	19	48	48	60	90	36	1"	9/16"	33
71 04 486	VRS-1 1/4"-7UNC	12.0	4.5	1.7	86	26	24	60	60	75	112	45	1 1/4"	5/8"	41.5
71 04 487	VRS-1 1/2"-6UNC	16.0	7.0	2.9	103	32	29	72	75	90	135	54	1 1/2"	7/8"	49.5
71 04 488	VRS-1 3/4"-5UNC	24.0	9.0	4.6	120	38	34	82	85	105	158	63	1 3/4"	1"	58
71 04 489	VRS-2"-4.5UNC	32.0	12.0	7.0	137	43	38	94	100	120	180	72	2"	1 1/8"	66

\*Stamped with F2 WLL

# Lifting and Lashing Points

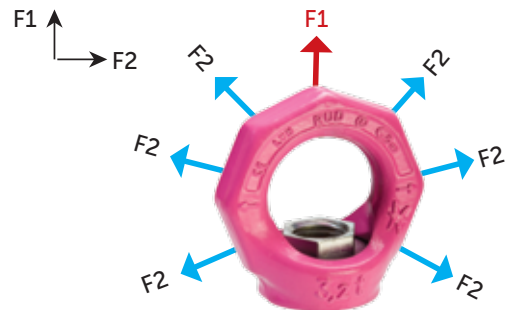
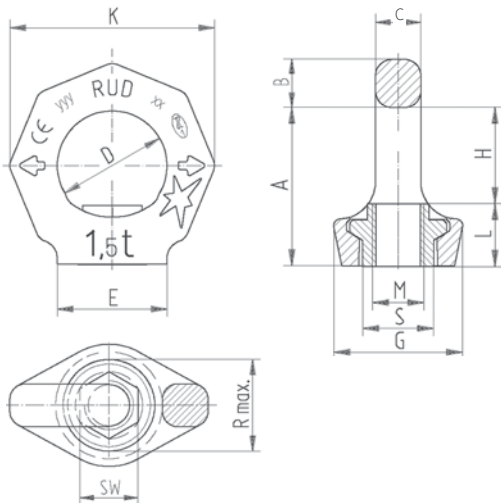
## RUD Starpoint Eye Nuts – VRM



Can be used for both axial and angular loading

### Features

- › Metric (coarse) threads
- › Rated for use in both single and multi-part lifts.



Product Code Ref. No.	Type	F1 (t)	F2* (t)	Weight (kg)	A (mm)	B (mm)	C (mm)	D (mm)	E (mm)	G (mm)	H (mm)	K (mm)	L (mm)	M (mm)	R <sub>max</sub> (mm)	S (mm)	SW (mm)
7900786	VRM M6	0.5	0.1	0.06	28	9	7	20	23	28	16	37	11	6	16	13	9
7992989	VRM M8	1.0	0.3	0.1	34	11	8.5	25	25	28	20	47	14	8	20	16	12
7990311	VRM M10	1.0	0.4	0.1	34	11	8.5	25	25	28	20	47	14	10	20	16	12
7990312	VRM M12	2.0	0.75	0.2	42	13	10	30	30	34	25	56	17	12	24	20	14
7990314	VRM M16	4.0	0.5	0.3	51	15	14	35	35.5	40	30	65	21	16	30	22	19
7990315	VRM M20	6.0	2.3	0.5	57	17	16	40	40	50	34	75	23	20	37	29	24
7990316	VRM M24	8.0	3.2	0.9	69	21	19	48	50	60	40	90	29	24	45	35	30
7993008	VRM M30	12.0	4.5	1.5	86	26	24	60	60	75	52	112	34	30	56	44	36

\*Stamped with F2 WLL

# Lifting and Lashing Points

## RUD INOX-STAR Stainless Eyebolts



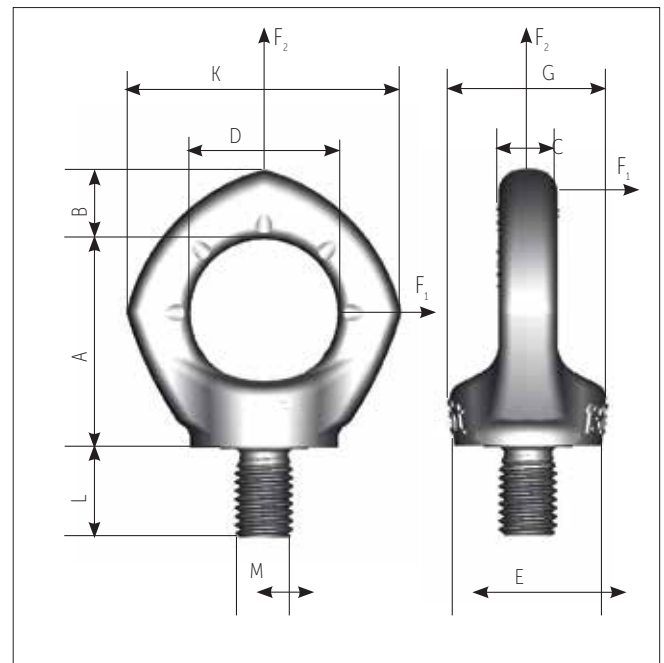
### Features:

- > Pentagonal shape – significantly different to the DIN 580 eyebolt
- > Turns through 360°. Can be set in the direction of the load
- > Clear statement of rated load F1 for the unfavourable load range
- > Safety factor 4:1
- > Forged eye body
- > 100 % crack-tested.

Note: Hand tighten when mounting with hexagonal wrench or adapter piece. Do not use an extension. The INOX-STAR must be able to be turned through 360° when screwed in.



MO  
075139



Product Code	Type	F1 (t)	F2* (t)	A (mm)	B (mm)	C (mm)	D (mm)	E (mm)	G (mm)	k (mm)	L (mm)	M (mm)	SW (mm)	Weight (kg)
7993835	INOX-STAR M12	1.2	0.5	43	14	10	30	30	32	56	18	M12	8	0.2
7993836	INOX-STAR M16	2.4	1.0	50	16	14	35	35.5	38	65	24	M16	10	0.3
7993837	INOX-STAR M20	3.6	2.0	57	19	16	40	41	46.5	74	30	M20	12	0.5
7993838	INOX-STAR M24	5.2	2.5	70	24	19	48	50	56	92	36	M24	14	0.9

\*Stamped with F2 WLL

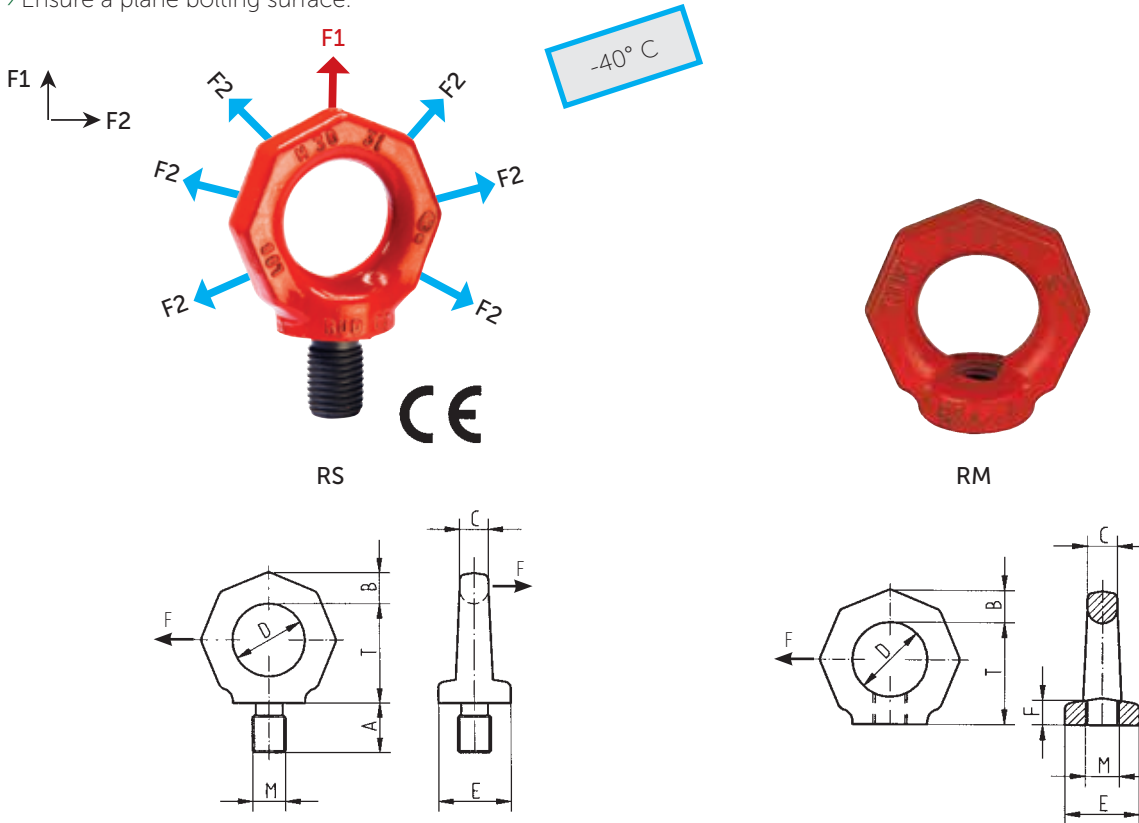
# Lifting and Lashing Points



## RUD Eye Bolt/Nuts – RS/RM

High tensile and distinctive.

- › Also available in imperial and special threads
- › Before lifting check the tightness of the eye bolt and nut!
- › Avoid rotating movement during transport
- › Ensure a plane bolting surface.



Product Code RS	Product Code RM	Type	F1 (t)	F2* (t)	A (mm)	B (mm)	C (mm)	D (mm)	E (mm)	F (mm)	M (mm)	T (mm)	Weight (kg)
61401	55254	RS M6	0.4	0.1	12	11	10	25	25	11	6	35	0.1
61402	55255	RS M8	0.8	0.2	12	11	10	25	25	11	8	35	0.1
56397	55258	RS M10	1.0	0.25	15	11	10	25	25	11	10	35	0.1
56398	55271	RS M12	1.6	0.4	18	13	12	30	30	12	12	41	0.2
56403	55281	RS M14	3.0	0.75	21	15	14	35	35	13	14	48	0.25
56404	55460	RS M16	4.0	1.0	24	15	14	35	35	13	16	48	0.3
56407	55343	RS M20	6.0	1.5	30	17	16	40	40	16	20	55	0.45
56408	55394	RS M24	8.0	2.0	36	21	20	50	50	20	24	70	0.7
56409	55438	RS M30	12.0	3.0	45	26	24	60	60	25	30	85	1.6
56954	53093	RS M36	16.0	4.0	54	43	38	90	100	37	36	130	6.0
56955	53095	RS M42	24.0	6.0	63	43	38	90	100	37	42	130	6.2
56956	53098	RS M48	32.0	8.0	67	43	38	90	100	37	48	130	6.4

\*Stamped with F2 WLL

# Lifting and Lashing Points



## Load Rings – RBG/VRBG

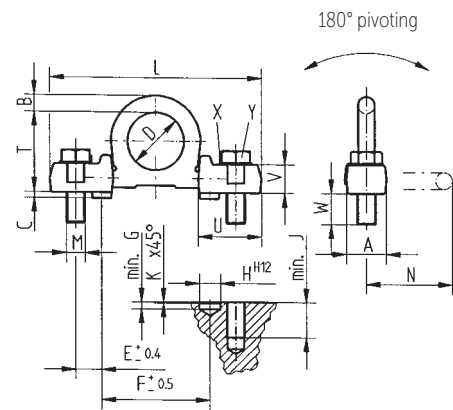
For bolting with patented relief lugs

3 to 80 tonne

### Features

- › Multi-directional loading
- › Bolt-On design
- › Ring folds flat
- › Rounded, well shaped ring design
- › Smaller bolt and a low profile due to the pivoting ring on RBG versions
- › Rated capacity can be increased 100% in specific lashing applications.

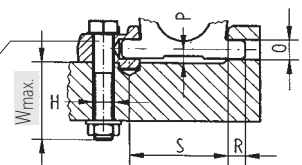
### RBG 3t



Example:

Load ring as part of the construction.

RUD special bolt available in vario length up to W<sub>max</sub>.

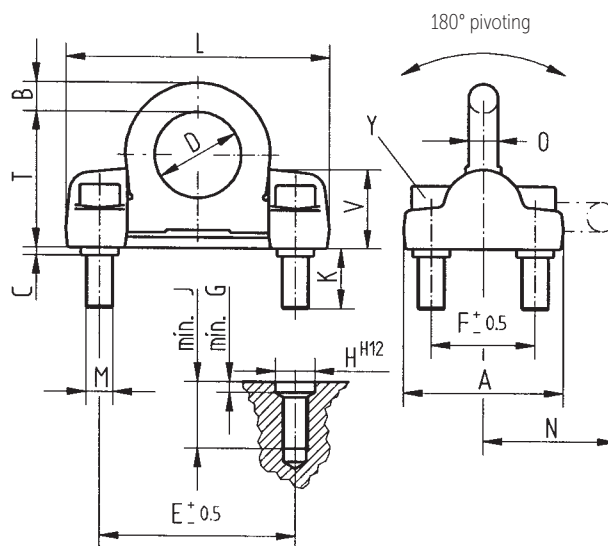


Product Code (with bolts and locking tabs)	Type	WLL (t)	A (mm)	B (mm)	C (mm)	D ±0.4 (mm)	E ±0.5 (mm)	F min (mm)	G H12 (mm)	H min (mm)	J x45° (mm)	K (mm)	L (mm)	M (mm)	N (mm)	O (mm)	P (mm)	R (mm)	S (mm)	T (mm)	U (mm)	V (mm)	W (mm)	W <sub>max</sub> (mm)	X DIN 463 (mm)	Y (mm)	Weight (kg)	Torque (Nm)	
51 817	RBG 3	3	34	16	5	48	22	92	6	18	30	1	178	16	71	17	12	20	84	67	53	24	25	30-160	17	M16 x50	10.9	0.9	120



# Lifting and Lashing Points

## VRBG 10/16t



Product Code (with bolts)	Type	WLL (t)	A (mm)	B (mm)	C (mm)	D (mm)	E ±0.5 (mm)	F ±0.5 (mm)	G min (mm)	H H12 (mm)	J min (mm)	L (mm)	M (mm)	N (mm)	O (mm)	V (mm)	K (mm)	T (mm)	Y ISO 4762 (mm)	Weight (kg)	Torque (Nm)
7994537	VRBG 10	10	120	22	6	65	143	78	8	30	50	213	20	100	25	54	43	102	M20x70-12.9	4.1	300
7993255	VRBG 16	16	170	30	8	90	198	104	10	46	70	270	30	134	32	67	63	131	M30x90-12.9	11.3	600

# Lifting and Lashing Points

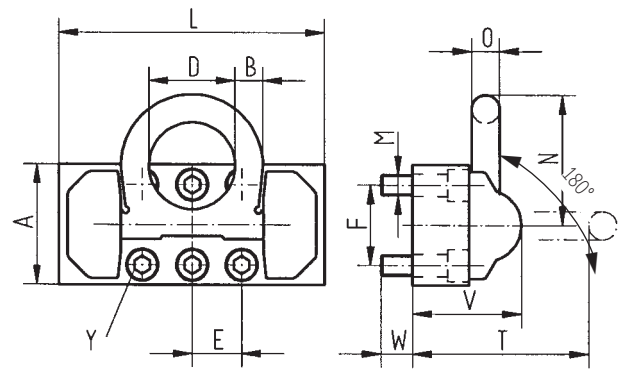


## VRBG 30/50/150t

### Features

- > Optimised distribution of the load force due to the 2 point fixing
- > Suspension ring can also be ordered individually
- > Supplied inner hexagon bolts are 100 % crack detected!
- > Lays flat when not in use
- > Low profile
- > Rounded well shaped design
- > High dynamic and static strength.

## VRBG 30/50/150t



Product Code (with bolts)	Type	WLL (t)	A (mm)	B (mm)	C (mm)	D (mm)	E ±0.5 (mm)	F ±0.5 (mm)	G min (mm)	H H12 (mm)	J min (mm)	L (mm)	M (mm)	N (mm)	O (mm)	T (mm)	V (mm)	W (mm)	Y ISO 4762 (mm)	Weight (kg)	Torque (Nm)
7985866	VRBG 30	30	180	42	-	130	75	120	-	-	-	400	30	195	42	262	163	46	6xM30x100-12.9	67	900
7985867	VRBG 50	50	270	70	-	230	100	200	-	-	-	650	36	340	60	406	220	58	8xM36x120-12.9	198	1000

... to 150 t on request!



# Lifting and Lashing Points



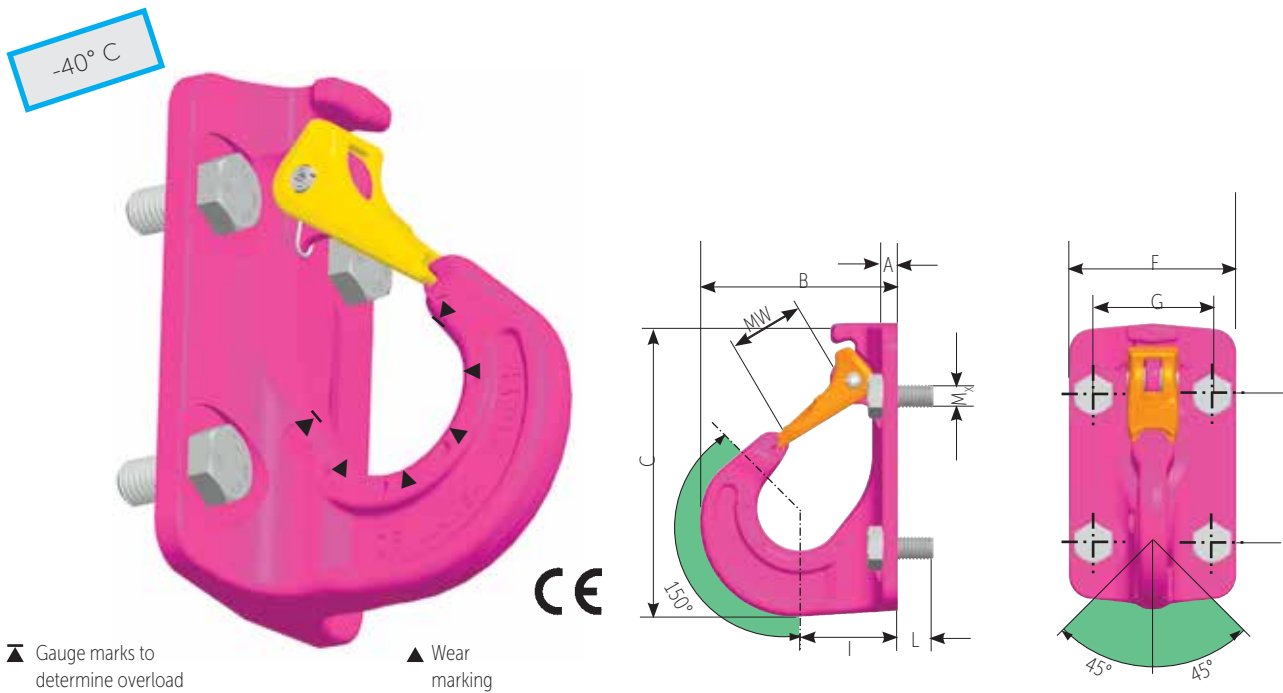
## RUD Bolt On Excavator Hook – VABH-B

Used as a lifting point for spreader bars, wire rope slings, round slings, lifting means with an oval suspension ring or eye. Can also be used as an excavator hook.

### Features:

- › Operating range: 150°
- › Permissible loading: 45° in lateral pull direction
- › Robust forged safety latch
- › Supplied with RUD special bolts 100 % crack detected and provided with special corrosion protection
- › Non protruding tip of the hook – no unintentional hooking in
- › Robust forged safety latch
- › Supplied with RUD special bolts, 100 % crack detected and corrosion protection
- › Enlarged hook tip avoids improper use - thus no hooking - in smaller openings
- › Patented wear marks on the hook
- › Measurable overload indicator.

## VABH-B



Product Code with RUD-bolts	Type	WLL (t)	MW (mm)	A (mm)	B (mm)	C (mm)	F (mm)	G (mm)	H (mm)	I (mm)	L (mm)	RUD Universal-bolt Mx	Weight (kg)
7991205	VABH-B 1.5t	1.5	25	6.5	78	117	70	48	60	38	15	4 x M10	0.9
7991206	VABH-B 2.5t	2.5	30	7.5	101	148	85	60	75	49	18	4 x M12	1.75
7991207	VABH-B 4t	4	35	10	122	171	104	70	90	59	25	4 x M16	3.2
8502238	VABH-B 6.7t	6.7	40	12	156	208	120	85	110	70	30	4 x M20	5.6

# Lifting and Lashing Points



## RUD Lifting Hook – VCGH-G

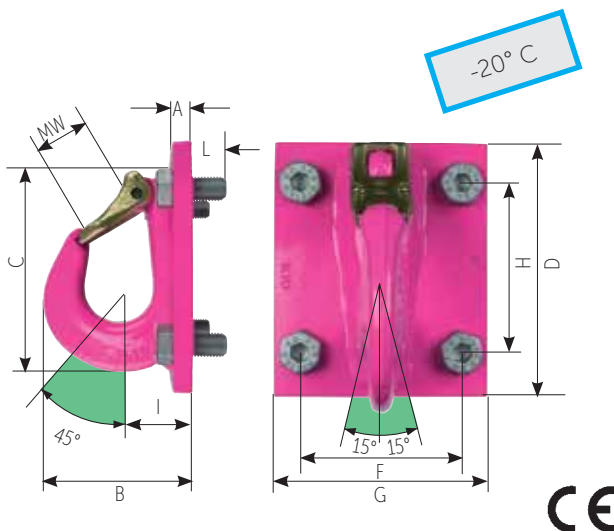
Hook can be used as a lifting point for spreader bars, for wire rope slings, round slings and lifting means with an oval suspension ring or eye.

### Features:

- › Permissible operating range up to max. 45°
- › Permissible loading 615° in lateral pull direction
- › Extremely robust forged safety latch.
- › Supplied with RUD special bolts, 100 % crack detected and provided with special corrosion protection.

**Note: Due to the limited operation range, assembly should be in the direction of pull.**

## VCGH-G



Product Code with RUD-bolts	Type	WLL (t) to 45°	MW (mm)	A (mm)	B (mm)	C (mm)	D (mm)	F (mm)	G (mm)	H (mm)	I (mm)	L (mm)	RUD Universal-bolt	Weight (kg)
7984048	VCGH-G16	10	48	15	141	200	220	120	170	150	70	35	4xM24	6.4
7984311	VCGH-G20	16	63	20	187	272	288	150	210	220	87	30	6xM24	10.4
7984313	VCGH-G22	20	63	20	195	276	292	150	240	220	92	30	6xM24	17.5

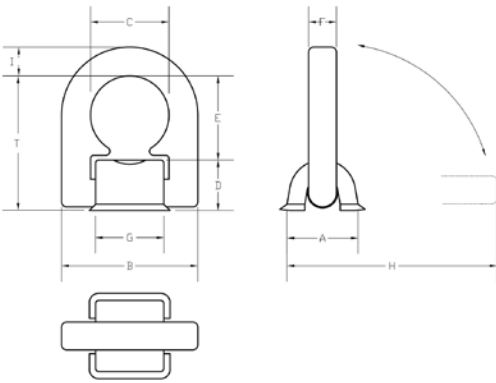
# Lifting and Lashing Points



## RUD VLBS – Load Ring

### Features

- › Available in WLL 1.5, 2.5, 4, 6.7, 10 and 16 tonne (working load limit) capacities.
- › The VLBS Load ring offers a functional, compact innovative design. The rings are 100% electro-magnetic crack tested and painted in the unique durable RUD pink powder coat finish.
- › Manufactured using high tensile CrNiMo - steel
- › Offers a full WLL in any direction with 4:1 design factor
- › Rated capacity can be increased 100% in specific lashing applications
- › Stainless Steel Load Rings available up to 2000kg WLL
- › Available with or without internal position holding springs (VLBS-16 supplied without spring)
- › Test certificates available
- › 100% electro-magnetic crack detection tested
- › Mounting blocks fully prepared for welding including distance lugs
- › VRBS weld-on eye plates available with WLL's 4 - 50 tonnes



Product Code	WLL (t)	A (mm)	B (mm)	C (mm)	D (mm)	E (mm)	Ø F (mm)	G (mm)	H (mm)	Weld (mm) HV+ Δa	Weight (kg)	Reference Number
VLBS - 1.5	1.5	33	66	38	25	40	13.5	33	87	HV5+ Δ3	0.35	7993115
VLBS - 2.5	2.5	36	77	45	27	48	13.5	40	97	HV7+ Δ3	0.5	7995346
VLBS - 4	4.0	42	87	51	31	52	16.5	46	112	HV8+ Δ3	0.8	7993116
VLBS - 6.7	6.7	61	115	67	44	73	22.5	60	157	HV12+ Δ4	1.9	7993117
VLBS - 10	10.0	75	129	67	55	71	26.5	60	173	HV16+ Δ4	2.9	7993118
VLBS - 16*	16.0	95	190	100	69	105	26.0	90	243	HV25+ Δ6	6.8	7993041

\*without spring dimensions and specifications subject to change

# Lifting and Lashing Points

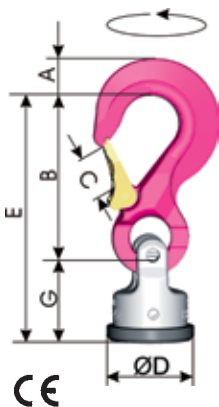


## RUD Power Point Weld On Lifting Points WPP

### Features:

- › Can be turned even in a 90° position under full load from the bolt centre line.
- › Clear identification of the WLL
- › Safety factor 4 : 1
- › All components 100 % crack detected
- › Max. WLL with smallest welding surface
- › No damage due to safe transport, fast amortisation because of easy handling

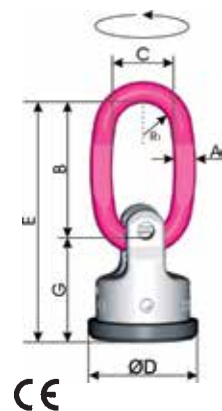
**Note: Not suitable for permanent swivelling under full load.**



WPP-S – the universal connection for round slings, wire ropes, hook and ring assemblies

Product Code	Type	WLL (t)	A (mm)	B (mm)	C (mm)	D (mm)	E (mm)	G (mm)	Weld HY+ Δ	Weight (kg)
7990721	WPP-S-0.63t	0.63	13	75	18	40	115	40	Δ 3.5	0.4
7989944	WPP-S-1.5t	1.5	20	97	25	46	147	50	Δ 4.5	1.0
7989945	WPP-S-2.5t	2.5	28	126	30	61	187	61	HY3+5	1.5
7989946	WPP-S-4t	4.0	36	150	35	78	227	77	HY3+6	3.3
7989947	WPP-S-5t	5.0 (6.7)	37	174	40	95	267	93	HY3+8	7.1
7989948	WPP-S-8t	8.0 (10)	49	208	48	100	310	102	HY3+10	8.2

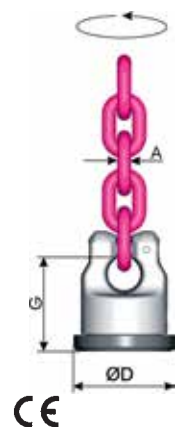
( ) increased WLL in axial load direction



WPP-B – the ring connection for hook assemblies

Product Code	Type	WLL (t)	A (mm)	B (mm)	C (mm)	D (mm)	E (mm)	F (mm)	G (mm)	Weld HY+ Δ	Weight (kg)
7989954	WPP-B-0.63t	0.63	9	65	35	40	105	40	15	Δ 3.5	0.35
7989955	WPP-B-1.5t	1.5	11	65	35	46	115	50	15	Δ 4.5	0.6
7989956	WPP-B-2.5t	2.5	13	74	40	61	135	61	18	HY3+5	1.0
7989957	WPP-B-4t	4.0	16	95	45	78	172	77	20	HY3+6	2.3
7989958	WPP-B-5t	5.0 (6.7)	19	130	60	95	223	93	25	HY3+8	4.7
7989959	WPP-B-8t	8.0 (10)	24	140	65	100	242	102	28	HY3+10	5.3

( ) increased WLL in axial load direction



WPP-VIP – for direct connection with VIP chain

Product Code without VIP-chain	Type	WLL (t)	A VIP-chain connection (mm)	D (mm)	G (mm)	Weld HY+ Δ	Weight (kg)
7989960	WPP-VIP4-0.63t	0.63	4	40	40	Δ 3.5	0.25
7989961	WPP-VIP6-1.5t	1.5	6	46	50	Δ 4.5	0.45
7989962	WPP-VIP8-2.5t	2.5	8	61	61	HY3+5	0.85
7989963	WPP-VIP10-4t	4.0	10	78	77	HY3+6	2.1
7989964	WPP-VIP13-5t	5.0 (6.7)	13	95	93	HY3+8	3.4
7989965	WPP-VIP16-8t	8.0 (10)	16	100	102	HY3+10	4.5

( ) increased WLL in axial load direction

# Lifting and Lashing Points



## RUD Power Point Weld On Lifting Points WPPH

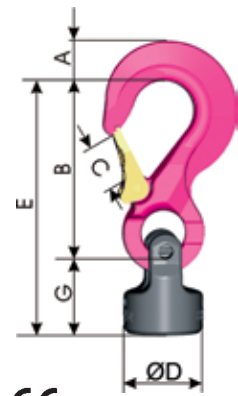
Features:

- > Loaded from any angle, swivels and pivots
- > Easy identification of WLL
- > Safety factor 4:1
- > All parts 100 % crack detected
- > Max. WLL at smallest welding surface
- > Fast amortisation due to better handling, no damage owing to safe transport
- > **Unsuitable for turning loads.**

WPPH-S – the universal connection for round slings, wire ropes, hook and ring assemblies

Product Code	Type	WLL (t)	A (mm)	B (mm)	C (mm)	D (mm)	E (mm)	G (mm)	Weld HY+ Δ	Weight (mm)
7990722	WPPH-S-0.63t	0.63	13	75	18	34	109	34	Δ 3,5	0.35
7989966	WPPH-S-1.5t	1.5	20	97	25	40	141	44	Δ 4.5	0.95
7989967	WPPH-S-2.5t	2.5	28	126	30	53	179	53	HY3+5	1.4
7989968	WPPH-S-4t	4.0	36	150	35	68	217	66	HY3+6	3.2
7989969	WPPH-S-5t	5.0 (6.7)	37	174	40	83	253	79	HY3+8	6.9
7989970	WPPH-S-8t	8.0 (10)	49	208	48	88	296	88	HY3+10	8.0

( ) increased WLL in axial load direction



CE

WPPH-B – the ring connection for hook assemblies

Product Code	Type	WLL (t)	A (mm)	B (mm)	C (mm)	D (mm)	E (mm)	G (mm)	R1 (mm)	Weld HY+ Δ	Weight (kg)
7989976	WPPH-B-0.63t	0.63	9	65	35	34	99	34	15	Δ 3,5	0.3
7989977	WPPH-B-1.5t	1.5	11	65	35	40	109	44	15	Δ 4.5	0.5
7989978	WPPH-B-2.5t	2.5	13	74	40	53	127	53	18	HY3+5	0.9
7989979	WPPH-B-4t	4.0	16	95	45	68	163	66	20	HY3+6	2.2
7989980	WPPH-B-5t	5.0 (6.7)	19	130	60	83	209	79	25	HY3+8	4.5
7989981	WPPH-B-8t	8.0 (10)	24	140	65	88	228	88	28	HY3+10	5.1

( ) increased WLL in axial load direction

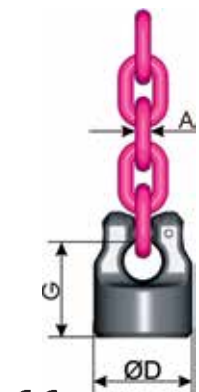


CE

WPPH-VIP – for direct connection with VIP chain

Product Code without VIP-chain	Type	WLL (t)	A (mm) VIP-CHAIN CONNECTION	D (mm)	G (mm)	Weld HY+ Δ	Weight (kg)
7989982	WPPH-VIP4-0.63t	0.63	4	34	34	Δ 3,5	0.2
7989983	WPPH-VIP6-1.5t	1.5	6	40	44	Δ 4.5	0.35
7989984	WPPH-VIP8-2.5t	2.5	8	53	53	HY3+5	0.75
7989985	WPPH-VIP10-4t	4.0	10	68	66	HY3+6	2.0
7989986	WPPH-VIP13-5t	5.0 (6.7)	13	83	79	HY3+8	3.2
7989987	WPPH-VIP16-8t	8.0 (10)	16	88	88	HY3+10	4.3

( ) increased WLL in axial load direction



CE

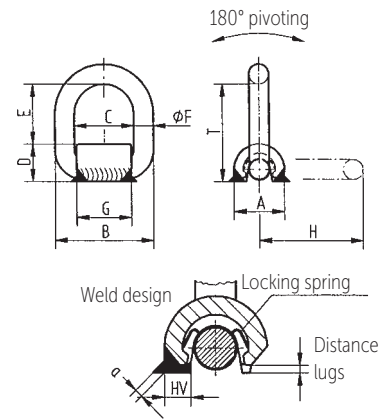
# Lifting and Lashing Points

## RUD Weld On Stainless Steel Load Ring



-100° C

Material No. 1.4571



Product Code	Type	WLL (t)	A (mm)	B (mm)	C (mm)	D (mm)	E (mm)	Ø F (mm)	G (mm)	H (mm)	T (mm)	Weld HY+ Δ	Weight (kg)
51 630*	LBS (1) RS 0.5	0.5	32	65	36	25	39	13.5	33	69	64	HV 5 + 3	0.3
51 740*	LBS (3) RS 1	1	42	85	50	31	50	16.5	46	87	81	HV 8 + 3	0.6
53 377	LBS (5) RS 2	2	61	110	65	44	72	22.5	60	125	116	HV 12 + 4	1.6

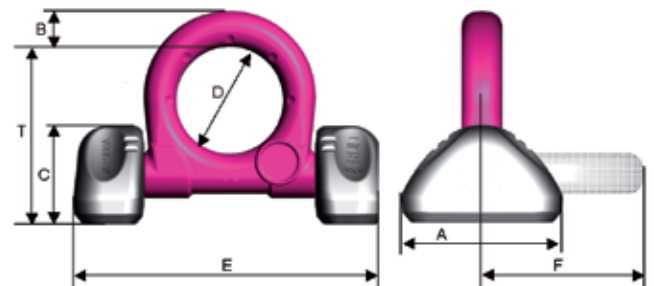
## RUD Weld-On Load Ring – VRBS – FIX

Features:

- › Forged, alloy steel
- › Recognition of inclination angle through markings on the ring and on the blocks in all levels.
- › No time-consuming alignment between weld-on blocks and ring.
- › VRBS-FIX can also be supplied with axial bearing disc if permanently used in an 90° load direction to the ring level (x).
- › Clamp spring is protected placed inside the weld-on block. The spring fixes the weld-on blocks to the ring and creates a radial clamping.



-40 C



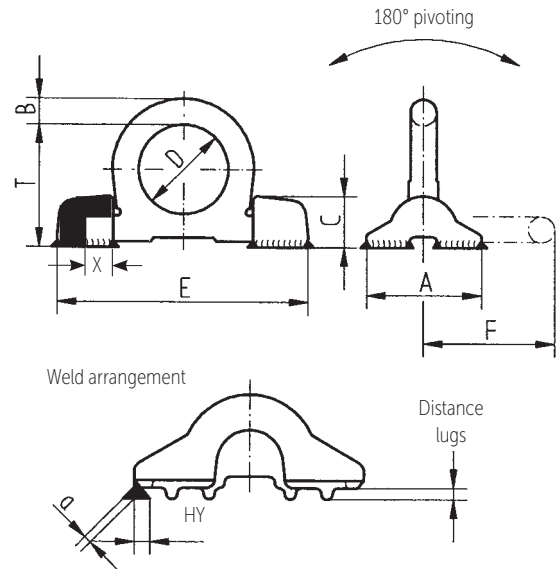
Product Code Pink	Type	WLL (t)	A (mm)	B (mm)	C (mm)	D (mm)	E (mm)	F (mm)	T (mm)	Weight (kg)
7999019	VRBS-FIX 4 t	4	60	14	39	48	132	69	74	0.93
7999020	VRBS-FIX 6.7 t	6.7	88	20	50	60	167	91	97	2.2
7999021	VRBS-FIX 10 t	10	100	22	60	65	191	100	108	3.7
7999301	VRBS-FIX 16 t	16	130	30	72	90	267	134	140	8.0
7999302	VRBS-FIX 31.5 t	31.5	160	42	99	130	366	195	202	18.4

## Lifting Points – for welding RUD Load Ring – VRBS

Suitable for outdoor use.

### Features:

- › Distribution of the load force due to the two point fixing, hence an optimised force introduction to the work piece
- › Forged, alloy steel
- › Suspension ring can also be ordered individually
- › Lays flat when not in use
- › Low profile
- › Rounded well shaped design
- › High dynamic and static strength
- › Patented distance lugs assist in achieving the correct root weld (approx. 3 mm)
- › The weld arrangement (continuous HY weld) fulfils the requirements of DIN 18800 i.e. the closed weld avoids corrosion and is thus suitable for outdoor use.



Product Code	Type	WLL (t)	A (mm)	B (mm)	C (mm)	D (mm)	E (mm)	F (mm)	O (mm)	Q (mm)	X (mm)	T (mm)	Weld HY+ Δ a	Weight (kg)
79 92 488	VRBS 4	4	62	14	28	48	135	71	17	77	14	65	HY 4 + 3	0.8
79 92 489	VRBS 6.7	6.7	88	20	39	60	170	92	23	101	15	84	HY 5.5 + 3	2.1
79 92 490	VRBS 10	10	100	22	46	65	195	100	28	106	22	95	HY 6 + 4	2.8
79 92 491	VRBS 16	16	130	30	57	90	263	134	36	147	28	127	HY 8.5 + 4	6.6
60267	VRBS 31.5	31.5	160	42	78	130	375	195	47	220	37	178	HY 18 + 4	19.0
56 834	VRBS 50	50	240	70	120	230	620	340	65	380	-	313	HY 25 + 8	85.0

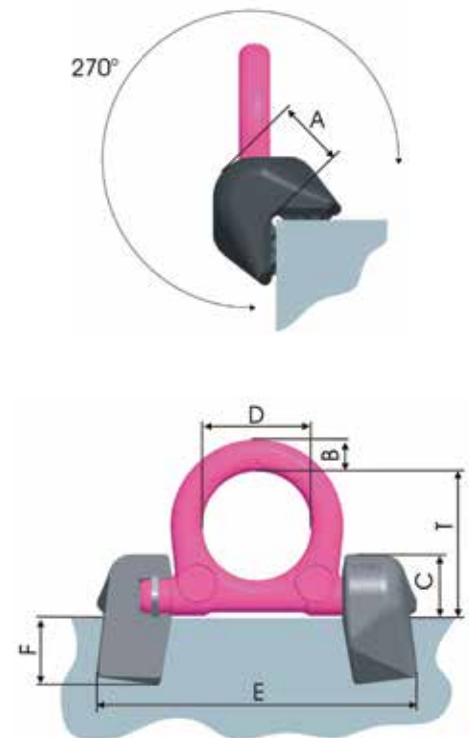
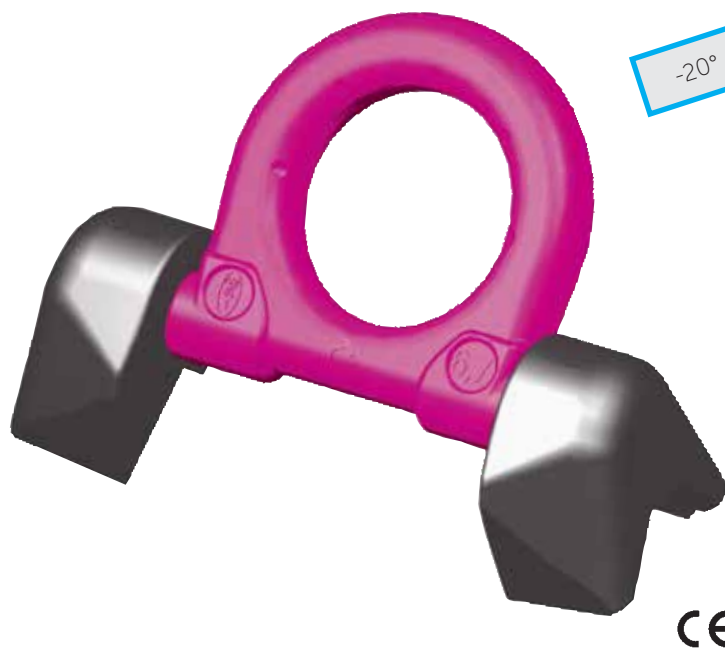
## Lifting and Lashing Points

### RUD Weld On Load Ring for Edge Attachments – VRBK-FIX

Welded on the corner, it reduces the number of lifting points, because instead of welding lifting points either on the top or on the side this type can be centrally located.

#### Features:

- › Forged, alloy steel
- › Loadable in any direction
- › Safety factor 4:1
- › Favourable force introduction due to the two point attachment
- › Low profile and 270° pivoting
- › Welding blocks and ring body fix connected by special radial clamp spring
- › Easy adjustment of the ring body and ring body stays in position



Product Code Pink	Type	WLL (t)	A (mm)	B (mm)	C (mm)	D (mm)	E (mm)	F (mm)	a	T (mm)	Weight (kg)
7902149	VRBK-FIX 4 t	4	32	14	28	48	140	29	HY 4+3	65	1
7902150	VRBK-FIX 6.7 t	6.7	40	20	35	60	180	33	HY 5+3	84	2.1
7902151	VRBK-FIX 10 t	10	52	22	46	65	212	46	HY 8+3	94	4.4



# Lifting and Lashing Points

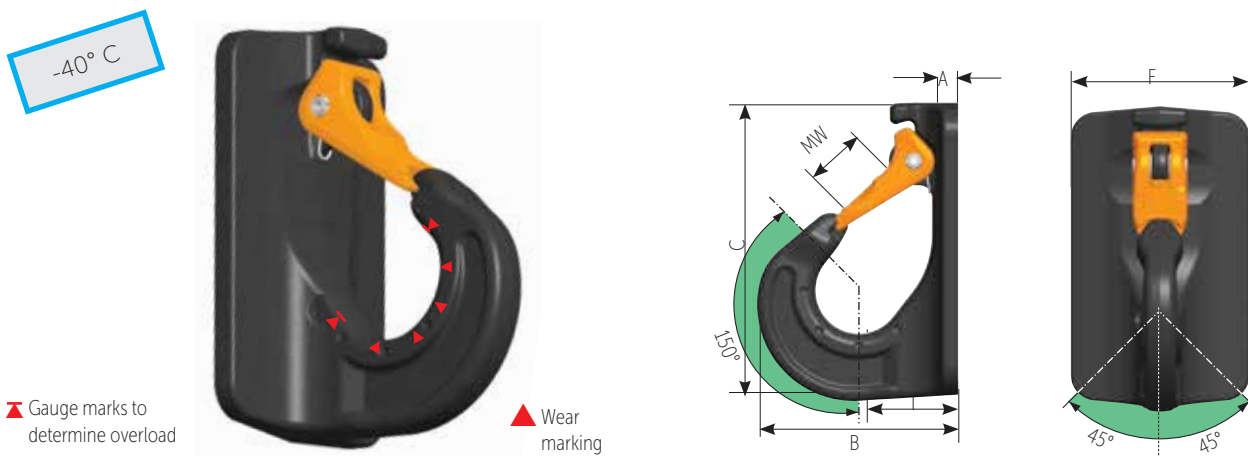


## RUD Weld On Excavator Hooks VABH-W

An excavator hook used as a lifting point for spreader bars, wire rope slings, round slings, lifting means with an oval suspension ring or eye.

### Features:

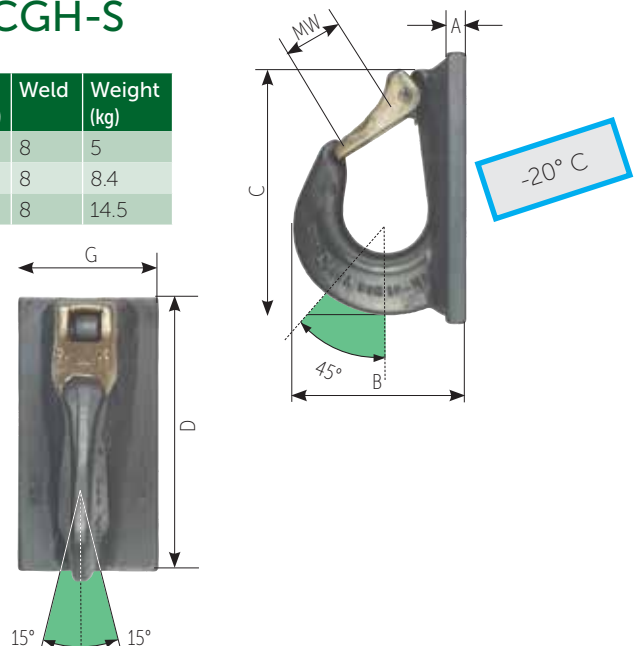
- > Operating range: 150°
- > Surface treatment: phosphated.
- > To be preferably welded in the direction of pull.
- > Permissible loading: 45° in lateral pull direction.
- > Non protruding tip of the hook - no unintentional hooking in.
- > Patented wear marks on the hook.
- > Robust safety latch protected by a ridge.
- > Light weight construction.
- > Measurable overload indicator.



Product Code	Type	WLL (t)	MW (mm)	A (mm)	B (mm)	C (mm)	F (mm)	I (mm)	Weld	Weight (kg)
7991208	VABH-W 1.5t	1.5	25	7.5	78	117	70	38	3	0.8
7991209	VABH-W 2.5t	2.5	30	8.5	101	148	85	49	3	1.8
7991210	VABH-W 4t	4	35	11	122	171	104	59	4	3.1
8502239	VABH-W 6.7t	6.7	40	13	156	208	120	70	5	5.9

## RUD Weld On Excavator Hooks - VCGH-S

Product Code	Type	WLL (t)	MW (mm)	A (mm)	B (mm)	C (mm)	D (mm)	G (mm)	I (mm)	Weld	Weight (kg)
7984047	VCGH-S 16	10	48	15	141	200	220	100	70	8	5
7984310	VCGH-S 20	16	63	20	187	272	288	120	87	8	8.4
7984312	VCGH-S 22	20	63	20	195	276	292	120	92	8	14.5

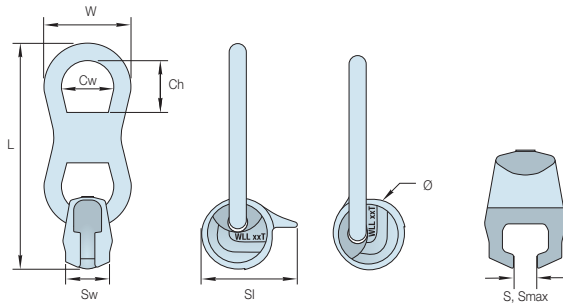


# Concrete Clutches

## Unilift Concrete Clutch / Locking Klaw

These strong, safe, lightweight clutches suit all spherical head lifting anchors. They protect against dangerous disconnection where there is a risk of fouling which is a common problem when lowering precast drainage products in confined spaces like trenches.

A higher working load limit for 1LK and 2LK Klaws compensates for sling angles as shown in the table below.



### Working Load Limits

Product Code	WLL (t) 0° Sling Angle	Annual Proof Load (kN)	Nominal W.L.L (t) Anchor	W.L.L (t) 60° Sling Angle
01LK	2	24	1.3	1.7
02LK	3	36	2.5	2.6
05LK	5	60	5	4.3
10LK	10	120	10	8.6
20LK	20	240	20	17.2
32LC	32	384	32	27.6

### Nominal Dimensions

Product Code	L (mm)	W (mm)	Ch (mm)	Cw (mm)	Sw (mm)	Sl (mm)	ø (mm)	S (mm)	Smax (mm)
01LK	170	66	44	40	33	72	56	11	13
02LK	215	85	59	52	42	88	68	16	18
05LK	270	110	62	70	57	113	88	22	25
10LK	365	145	83	90	73	144	112	31	32
20LK	515	210	103	130	110	196	152	43	46
32LC	680	272	189	172	160	300	180	52	58

A 5 tonne remote release Locking Klaw is also available which is ideal for Tilt-Up construction.

Product Description	Part Code
5 Tonne Remote Release	05LKRR

**Ancon**  
BUILDING PRODUCTS



BRISBANE SOUTH	4 Burchill St Loganholme, Qld 4129	P 07 3801 0811	E Sales.brisbane@jlr.com.au
BRISBANE NORTH	5 Johnstone Rd, Brendale, Qld 4500	P 07 3881 1445	E Sales.brendale@jlr.com.au
GOLD COAST	39 Dover Dve, Burleigh Heads, Qld 4220	P 07 5535 8277	E Sales.goldcoast@jlr.com.au
TOOWOOMBA	345 Taylor St, Toowoomba, Qld 4350	P 07 4634 6566	E Sales.toowoomba@jlr.com.au
MACKAY	179 Boundary Rd, Paget, Qld 4740	P 07 4952 5520	E Sales.mackay@jlr.com.au
GLADSTONE	4 Tranberg St, Gladstone, Qld 4680	P 07 4972 6511	E Sales.gladstone@jlr.com.au
SYDNEY	50 Skarratt St, Silverwater, NSW 2128	P 02 9748 3044	E Sales.silverwater@jlr.com.au
NEWCASTLE	33 Firebrick Dve, Thornton NSW 2322	P 02 4966 8622	E Sales.thornton@jlr.com.au
MUSWELLBROOK	49 Thomas Mitchell Dve, M'brook NSW	P 02 6541 5100	E Sales.muswellbrook@jlr.com.au
MELBOURNE	4/28-30 Little Boundary Rd, Laverton Nth, Vic	P 03 9315 1520	E Sales.melbourne@jlr.com.au
DANDENONG	28 Swift Way, Dandenong South, Vic 3175	P 03 9768 3244	E Sales.dandenong@jlr.com.au
PERTH	16-18 Kewdale Rd, Welshpool, WA 6106	P 08 9451 1522	E Sales.perth@jlr.com.au

[www.lifting.com.au](http://www.lifting.com.au)