



safety & lifting

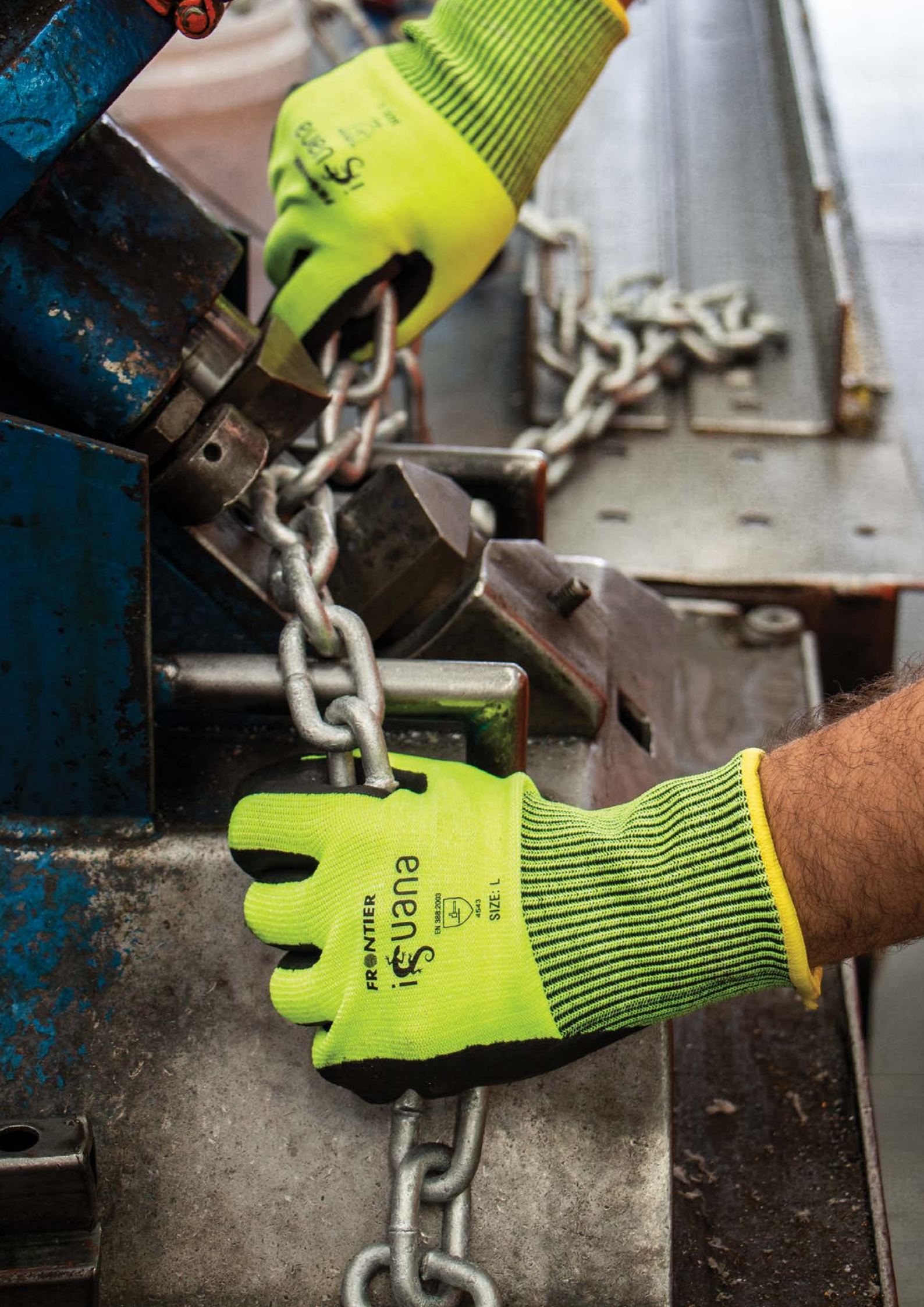
FOR SAFE  
WORKING LIVES

## 4 GENERAL PURPOSE CHAIN



CATALOGUE **VOL2**





FRONTIER  
iguana

EN 388:2003



4543

SIZE: L





## GENERAL PURPOSE CHAIN

# 4



WHETHER IT'S FOR TRANSPORT USE, MARINE APPLICATIONS OR SECURITY PURPOSES, WE HAVE THE RIGHT CHAIN TO SUIT YOUR NEEDS

All general purpose chain is sourced from the finest mills throughout the world to ensure consistency and quality.

PROOF COIL CHAIN	6
HARDWARE CHAIN	7
STAINLESS STEEL CHAIN	8
GRADE 'L' CHAIN	9
TRAILER & TRANSPORT CHAIN	10

## GENERAL PURPOSE CHAIN

OUR IN DEPTH RANGE OF BEAVER TESTED AND COMMERCIAL CHAIN SUITS A VARIETY OF APPLICATIONS INCLUDING TRANSPORT, MARINE OR SECURITY USE.

Beaver's consistency in providing a quality product to the Australian market has been tried and tested over many years and we only source chain from the finest mills throughout the world.

**PLEASE NOTE:** Our general purpose chain featured in this section is not suitable for lifting. Should approved lifting chain and components be required for your application, please refer to our Lifting Chain and Components section of this catalogue - for Grade 80, 100 or 120 chain and components.

### REGULAR & LONG LINK PROOF COIL CHAIN

Proof coil chain is a non-rated chain, manufactured from low carbon steel, for general purpose use only. It is not suitable for lifting.

"Proof coil" relates to the number of consistent links in any one length. Link dimensions include regular and long link (long link is ideal if you require more room for attachments).

**OUR BEAVER PROOF COIL CHAIN IS ALSO AVAILABLE IN THE FOLLOWING OPTIONS:**

- Hot dipped galvanised for a longer lifespan
- Electro galvanised for a smooth finish
- Self-colour for non-harsh environments

### HARDWARE CHAIN

Hardware chain is untested and of commercial quality. It should not be used for suspension, lifting applications, or other purposes subject to control by statutory authorities/requirements.

Beaver Hardware Chain is available in both self colour, or a galvanised version which is more resistant to weathering.

### GENERAL PURPOSE STAINLESS STEEL CHAIN

Typically, stainless steel chain is manufactured from Grade 304 and Grade 316 Stainless, which is highly resistant to corrosion in acid and alkaline environments. It is therefore suited to marine applications.

The key difference between Grade 304 and Grade 316 chain is the addition of molybdenum in G316. Molybdenum is an alloy which drastically enhances corrosion resistance, especially for more saline or chloride-exposed environments.

Our Beaver General Purpose Stainless Steel Chain is not suitable for any lifting or towing applications. For Stainless Steel Lifting Chain please refer to our Lifting Chain & Components section of this catalogue.

### GRADE 'L' CHAIN

Manufactured from Grade 30 low carbon steel, Grade L Chain is commonly used for moorings, anchor chain and other marine applications.

Our Beaver Grade 'L' Chain complies with the requirements of Australian Standard AS2321 Short Link Chain for Lifting Purposes, however we recommend that it not be used for heavy lifting purposes.

### TRAILER & TRANSPORT CHAIN

#### TRAILER SAFETY CHAIN

Is designed in accordance with Australian and New Zealand Standard AS/NZS4177.4.

The chain should be attached between the towing vehicle and the trailer to retain connection in the event of a coupling failure.

Regulations state that light trailers must have safety chains to link the trailer to the tow vehicle and must be strong enough to hold it in the case of an accidental disconnection.

Trailer safety chain must also have sufficient length to allow the normal articulation of the trailer but be short enough to prevent the draw bar hitting the ground.

**Note:-** Please check your State Road Safety Regulations for required chain markings and number of safety chains required for loads.



#### TRANSPORT CHAIN

Is manufactured from heat treated carbon steel, in accordance with Australian and New Zealand Standard AS/NZS 4344 - Transport Chain and Components. Transport Chain is primarily used in lashing applications to tie down loads on transport equipment.

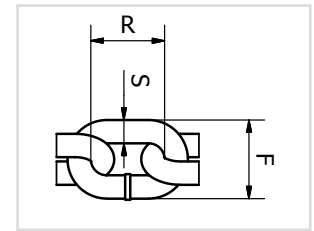
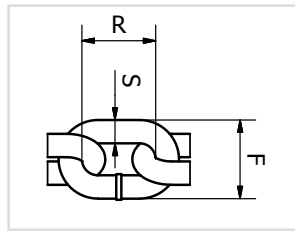
**OUR BEAVER GRADE 70 TRANSPORT CHAIN FEATURES THE FOLLOWING:**

- Yellow chromate (gold) plating makes it easily recognisable - even from a distance
- The mark 4344 plus the chain capacity, stamped at intervals along its entire length, for added safety





# PROOF COIL CHAIN



## REGULAR LINK PROOF COIL CHAIN

### FEATURES AND BENEFITS

- General purpose chain
- Manufactured from low carbon steel
- Suitable for various non lifting applications

UOM: /METRE

CODE	NOMINAL SIZE (mm)	S (mm)	R (mm)	F (mm)	FINISH	METRES /100kg
SELF COLOUR						
100103	3	3.2	16	12	Self Colour	511
100104	4	4	18.5	14.5	Self Colour	320
100105	5	4.7	19	17	Self Colour	203
100106	6	6.35	22	21	Self Colour	129
100108	8	7.94	26.5	27.2	Self Colour	77.8
100110	10	9.5	30	32	Self Colour	48.5
100113	13	12.7	39	43	Self Colour	29.7
100116	16	15.8	45	53	Self Colour	20.2
100120	20	19	55	63	Self Colour	12.3
100124	24	25.4	73	84	Self Colour	8.5
GALVANISED						
100303	3	3.2	16	12	Galvanised	498
100304	4	4	18.5	14.5	Galvanised	305
100305	5	4.7	19	17	Galvanised	193
100306	6	6.35	22	21	Galvanised	120
100308	8	7.94	26.5	27.2	Galvanised	74.1
100310	10	9.5	30	32	Galvanised	47.1
100313	13	12.7	39	43	Galvanised	27.7
100316	16	15.8	45	53	Galvanised	18.2
100320	20	19	55	63	Galvanised	11.6
100324	24	25.4	73	84	Galvanised	8.04

NOT TO BE USED FOR LIFTING

## LONG LINK PROOF COIL CHAIN

### FEATURES AND BENEFITS

- General purpose chain
- Manufactured from low carbon steel
- Suitable for various non lifting applications

UOM: /METRE

CODE	NOMINAL SIZE (mm)	S (mm)	R (mm)	F (mm)	FINISH	METRES /100kg
SELF COLOUR						
130104	4	4	25.4	18.6	Self Colour	335
130105	5	5	29.3	21.8	Self Colour	217
130106	6	6.3	34.5	26.1	Self Colour	135
130108	8	8	41.2	31.9	Self Colour	82.2
130110	10	10	49	38	Self Colour	52.9
HOT DIPPED GALVANISED						
130304	4	4	25.4	18.6	Galvanised	318
130305	5	5	29.3	21.8	Galvanised	206
130306	6	6.3	34.5	26.1	Galvanised	128
130308	8	8	41.2	31.9	Galvanised	78.1
130310	10	10	49	38	Galvanised	50.2

NOT TO BE USED FOR LIFTING





**PRE-PACKED  
50kg  
PAIL**



**HANDY  
PRE-PACKED  
25kg  
PAIL**



## REGULAR LINK HARDWARE CHAIN 50kg

PRE-PACKED 50kg HANDY HARDWARE DISPLAY PAIL

### FEATURES AND BENEFITS

- General purpose chain
- Manufactured from low carbon steel
- Suitable for various non lifting applications

UOM: PAIL

CODE	SIZE (mm)	FINISH	METRES /50kg
<b>SELF COLOUR</b>			
100103PP	3	Self Colour	256
100104PP	4	Self Colour	173
100105PP	5	Self Colour	102
100106PP	6	Self Colour	64.5
100108PP	8	Self Colour	39
100110PP	10	Self Colour	25
100113PP	13	Self Colour	14.85
<b>ELECTRO GALVANISED</b>			
100203PP	3	Electro Galvanised	250
<b>GALVANISED</b>			
100303PP	3	Galvanised	250
100304PP	4	Galvanised	175
100305PP	5	Galvanised	120
100306PP	6	Galvanised	64.5
100308PP	8	Galvanised	39
100310PP	10	Galvanised	25
100313PP	13	Galvanised	14.7

NOT TO BE USED FOR LIFTING

## REGULAR LINK HARDWARE CHAIN 25kg

PRE-PACKED 25kg HANDY HARDWARE DISPLAY PAIL

### FEATURES AND BENEFITS

- General purpose chain
- Manufactured from low carbon steel
- Suitable for various non lifting applications

UOM: PAIL

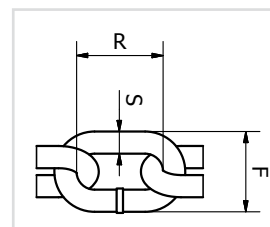
CODE	SIZE (mm)	FINISH	METRES /25kg
<b>SELF COLOUR</b>			
100103P	3	Self Colour	147
100104P	4	Self Colour	87
100105P	5	Self Colour	61
100106P	6	Self Colour	35
100108P	8	Self Colour	22
<b>GALVANISED</b>			
100303P	3	Galvanised	133
100304P	4	Galvanised	80
100305P	5	Galvanised	57
100308P	8	Galvanised	21

NOT TO BE USED FOR LIFTING



# STAINLESS STEEL CHAIN

**MANUFACTURED IN 304 AND 316 GRADE**  
Not suitable for any lifting or towing applications



## GRADE 316 REGULAR LINK STAINLESS STEEL CHAIN

### FEATURES AND BENEFITS

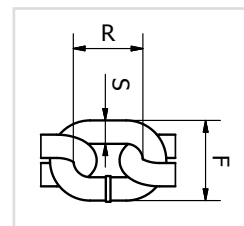
- Manufactured from 316 grade stainless
- Highly resistant to corrosion
- Suitable for marine applications

UOM: /METRE

CODE	NOMINAL SIZE (mm)	S (mm)	R (mm)	F (mm)	FINISH	METRES /100kg
146102	2	2	14.8	8.25	Stainless Steel	1666.6
146104	4	4	18.6	16	Stainless Steel	384.6
146106	6	6	26	23.5	Stainless Steel	137.3
146108	8	8	32.2	29.5	Stainless Steel	80
146110	10	10	39	36.2	Stainless Steel	49.6
146113	13	13	49.1	46.1	Stainless Steel	28.7

Metres per drum are subject to + or - 10% on actual metreage

NOT TO BE USED FOR LIFTING



## GRADE 316 SHORT LINK STAINLESS STEEL CHAIN

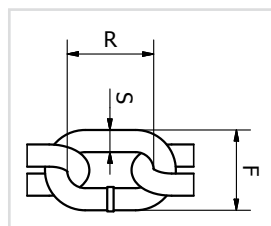
### FEATURES AND BENEFITS

- Manufactured from 316 grade stainless
- Highly resistant to corrosion
- Suitable for marine applications

UOM: /METRE

CODE	NOMINAL SIZE (mm)	S (mm)	R (mm)	F (mm)	FINISH	METRES /100kg
146206	6	6	30.5	19.2	Stainless Steel	133.3
146208	8	8	40	25.6	Stainless Steel	74.8

NOT TO BE USED FOR LIFTING



## GRADE 304 REGULAR LINK STAINLESS STEEL CHAIN

### FEATURES AND BENEFITS

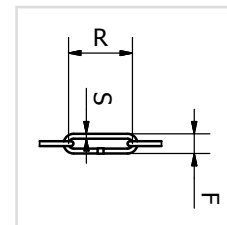
- Manufactured from 304 grade stainless
- Highly resistant to corrosion
- Suitable for marine applications

UOM: /METRE

CODE	NOMINAL SIZE (mm)	S (mm)	R (mm)	F (mm)	FINISH	METRES /100kg
147104	4	4	18.6	16	Stainless Steel	384.6
147106	6	6	26	23.5	Stainless Steel	137.3
147108	8	8	32.2	29.5	Stainless Steel	80
147110	10	10	39	36.2	Stainless Steel	49.6

Metres per drum are subject to + or - 10% on actual metreage

NOT TO BE USED FOR LIFTING



## GRADE 316 LONG LINK STAINLESS STEEL CHAIN

### FEATURES AND BENEFITS

- Manufactured from 316 grade stainless
- Highly resistant to corrosion
- Suitable for marine applications

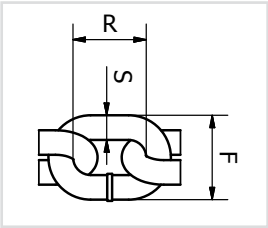
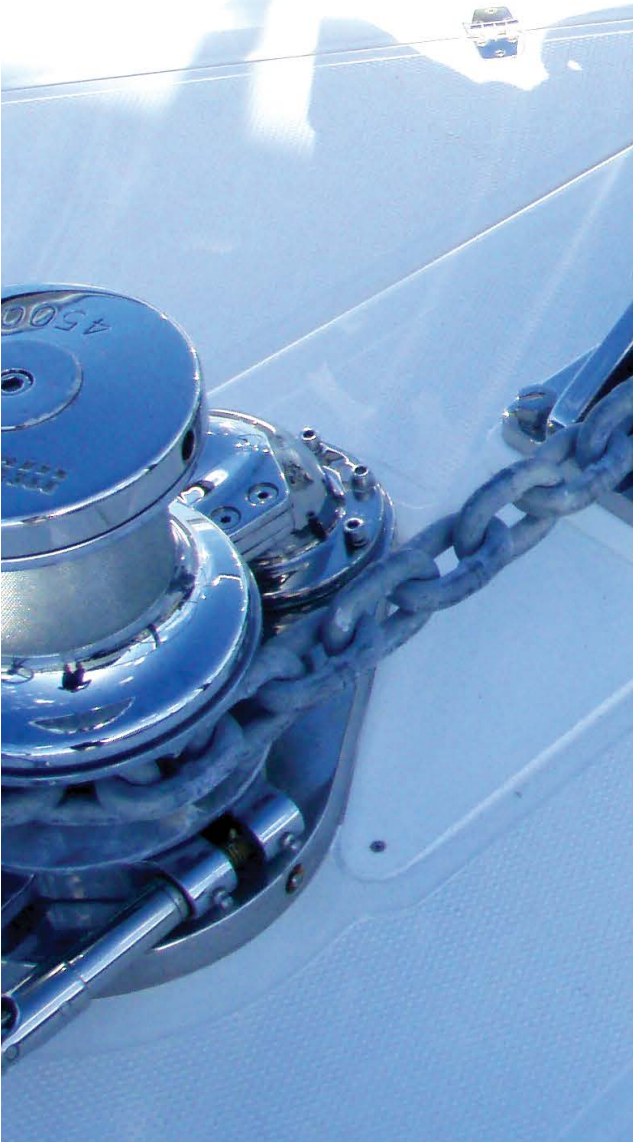
UOM: /METRE

CODE	NOMINAL SIZE (mm)	S (mm)	R (mm)	F (mm)	FINISH	METRES /100kg
146102L	2	2	26	8	Stainless Steel	1639

NOT TO BE USED FOR LIFTING



MANUFACTURED TO AS2321  
Links marked with 'L'



GRADE 'L' CHAIN SELF COLOUR

FEATURES AND BENEFITS

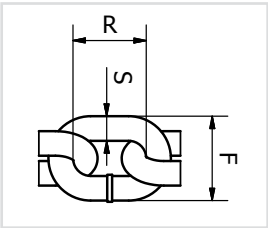
- Manufactured from grade 30 low carbon steel
- Suitable for anchor chain & marine applications

STANDARDS  
Complies to AS2321

UOM: /METRE

CODE	WLL (t)	NOMINAL SIZE (mm)	S (mm)	R (mm)	F (mm)	FINISH	METRES /100kg
143106	0.40	6	6.3	18.8	21.6	Self Colour	116.3
143108	0.64	8	8	23.8	27	Self Colour	71
143110	1.00	10	10	29.8	34.3	Self Colour	45

NOT RECOMMENDED FOR LIFTING



GRADE 'L' CHAIN  
HOT DIPPED GALVANISED

FEATURES AND BENEFITS

- Manufactured from grade 30 low carbon steel
- Suitable for anchor chain & marine applications

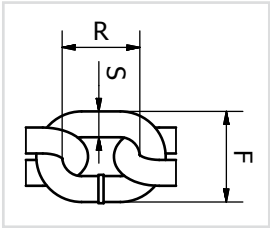
STANDARDS  
Complies to AS2321

UOM: /METRE

CODE	WLL (t)	NOMINAL SIZE (mm)	S (mm)	R (mm)	F (mm)	FINISH	METRES /100kg
143306	0.40	6	6.3	18.8	21.6	Galvanised	110
143308	0.64	8	8	23.8	27	Galvanised	69.9
143310	1.00	10	10	29.8	34.3	Galvanised	43.9
143313	1.70	13	13	38.8	44.6	Galvanised	26.3
143316	2.58	16	16	47.8	54.8	Galvanised	17.5
143320	4.03	20	20	59.2	68.5	Galvanised	11.1

NOT RECOMMENDED FOR LIFTING

TRAILER & TRANSPORT CHAIN



TRAILER SAFETY CHAIN

FEATURES AND BENEFITS

- Available in hot dipped galvanized and self colour finishes
- For trailers up to 3500kg ATM

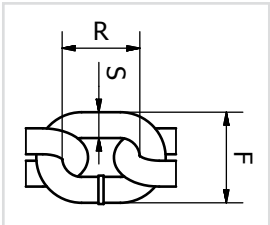
STANDARDS

Complies to AS/NZS4177.4

UOM: /METRE

CODE	WLL (t)	NOMINAL SIZE (mm)	S (mm)	R (mm)	F (mm)	FINISH	METRES /100kg
SELF COLOUR							
142008	1.60	8	7.6	43.5	31	Self Colour	93.4
142010	2.50	10	9.5	53.1	39	Self Colour	61.2
142013	3.50	13	12	51.7	44.5	Self Colour	65.5
GALVANISED							
142008G	1.60	8	7.6	43.5	31	Galvanised	91.1
142010G	2.50	10	9.5	53.1	39	Galvanised	59.7
142013G	3.50	13	12	51.7	44.5	Galvanised	34.6

NOT RECOMMENDED FOR LIFTING



GRADE 70 GOLD TRANSPORT CHAIN

FEATURES AND BENEFITS

- The yellow chromate (gold) plating makes it easily recognisable even from a distance
- Transport chain also carries the mark 4344 plus the chain capacity, stamped at intervals along its entire length
- High tensile strength
- Not to be used for lifting

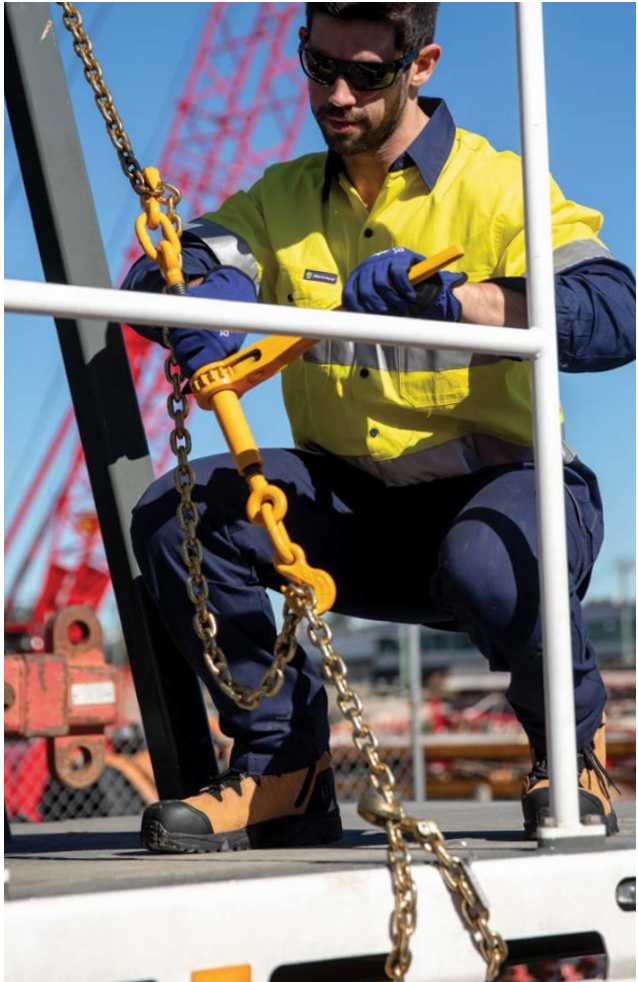
STANDARDS

Complies to AS/NZS4344

UOM: /METRE

CODE	LASHING CAP. (t)	NOMINAL SIZE (mm)	S (mm)	R (mm)	F (mm)	FINISH	METRES /100kg
145006	2.30	6	6	18.5	20	Zinc Dichromate	125
145008	3.80	8	8	24	28	Zinc Dichromate	70
145010	6.00	10	10	30	35	Zinc Dichromate	45
145013	9.00	13	13	39	45.5	Zinc Dichromate	26.8

NOT RECOMMENDED FOR LIFTING





FOR SAFE  
**WORKING  
LIVES**



**safety & lifting**

**Bunzl Safety & Lifting**

55 Sarah Andrews Close

Erskine Park NSW 2759

**1800 967 573**

[bunzlsafety.com.au](http://bunzlsafety.com.au)