



safety & lifting

FOR SAFE  
WORKING LIVES

2

WORKWEAR



CATALOGUE VOL2









# WORKWEAR

# 2



BOOMERANG



## KEEPING YOUR TEAM SAFE, COMPLIANT AND LOOKING GOOD IS EFFORTLESS

with our range of quality workwear, protective wear, corporate clothing and accessories suited to a variety of working conditions. Rationalising, ordering, customising and managing your workwear is also made easy with tried and tested online systems, expert technical advice and national distribution network.

HI-VIS SHIRTS	8-11
HI-VIS POLOS & T-SHIRTS	12-14
PANTS & SHORTS	15-18
DENIM JEANS	19-20
HI-VIS WOMENS SHIRTS & POLOS	22-23
WOMENS PANTS	24-25
HI-VIS MATERNITY WEAR	26
HI-VIS COVERALLS	27
HI-VIS JACKETS & VESTS	28-30
WET WEATHER / RAINWEAR	31-35
FLAME RESISTANT GARMENTS	36-45
FASHION BIZ CORPORATE WEAR	46-52
JB'S WORKWEAR	54-55
ACCESSORIES	56-57



For Safe  
Working Lives.

safety & lifting

# SAFE WORKWEAR IS NOT ONLY ABOUT BEING VISIBLE IN ALL CONDITIONS, BUT ENSURING THE BODY IS PROTECTED FROM EXPOSURE TO NATURAL ELEMENTS AND POTENTIAL WORKPLACE HAZARDS.

At Bunzl Safety & Lifting, we prioritise workplace safety and risk reduction. That's why we offer and recommend only products that meet the latest standards and the newest trends in workwear.

All of our high visibility workwear, fire resistant clothing and protective wear meets the necessary Australian and New Zealand Standards for safety garments.

## WHAT ARE THE HI VIS STANDARDS?

All hi vis workwear used on a work site must be compliant with two Australian Standards:

- **AS/NZS 1906.4:2023** - Retroreflective materials and devices for road traffic control purposes  
Part 4: High-visibility materials for safety garments  
- Refers to the reflective or fluorescent materials used
- **AS 4602.1:2024** - Hi visibility safety garments  
Part 1: Garments for high risk applications  
- Covers all other aspects of design and tape position

### HIGH VISIBILITY MATERIALS - AS/NZS 1906.4.2023

#### FOUR CLASSES COVER HIGH VISIBILITY SAFETY MATERIALS:

- **Class F:** Daytime fluorescent
- **Class R:** Retro reflective material
- **Class RF:** Retro reflective and fluorescent
- **Class NF:** High daytime visibility, non-fluorescent

These classes are used to determine the day or night that a garment can be worn, and whether it is fluorescent or retroreflective.

### HIGH VISIBILITY GARMENTS - AS 4602.1:2024

High visibility garments are categorised in classes and three levels, depending on whether they are intended for day or night use.

These are:

- **Class D:** Day Use Only  
(minimum 0.2m<sup>2</sup> of fluorescent fabric on the upper front/back torso)
- **Class N:** Night Use Only  
(reflective tape applied according to Standards)
- **Class D/N:** Day and Night Use (combination of the above two).

TORSO GARMENT REQUIREMENTS					
	CLASS D DAY USE ONLY		CLASS N NIGHT USE ONLY		CLASS D/N DAY OR NIGHT USE
LEVELS	1 2 3	LEVELS	1 2 3	LEVELS	1 2 3
COVERALL & ENSEMBLE GARMENTS TORSO & TROUSER REQUIREMENTS					
	CLASS N-E NIGHT USE ENSEMBLE		CLASS D/N-E DAY OR NIGHT USE ENSEMBLE		
LEVELS	2 3	LEVELS	2 3		

### UV PROTECTION - AS 4399:2020

If employees are exposed to direct sunlight during their work day, they should be wearing garments with the required UV protection. These garments must comply with Australian Standard AS 4399:2020. For those employees who work in direct sunlight, the UPF rating of safety garments should be in the 50-50+ Excellent Category with arm and leg coverage.

This Standard specifies the requirements for determining the UPF level of protection from the sun for garments that are worn in close proximity to the skin.

#### THERE ARE THREE PROTECTION UPF RATINGS:

RATED UPF	CLASSIFICATION
15	MINIMUM PROTECTION
30	GOOD PROTECTION
50 - 50+	EXCELLENT PROTECTION

**UPPER BODY** - Minimum coverage of clothing should include the shoulders, torso and at least 3/4 of upper-arms.

**LOWER BODY** - Minimum coverage of clothing should include the hip line to at least halfway down the thighs.

**ALL-IN-ONE COVERAGE** - The recommended minimum coverage of clothing includes the shoulders, at least 3/4 of upper-arms, and reduced if the material is wet, stretched or from the effects of normal wear or exposure to chemicals.

### FIRE RESISTANT CLOTHING

Fire Resistant (FR) clothing helps protect workers from short-term thermal incidents. In an industrial setting, the most serious burns typically aren't caused by the actual fire or explosion itself, but by standard work gear (made from non-FR cotton, nylon or polyester) igniting and continuing to burn even after the heat source has been removed. FR clothing helps combat this problem because it self-extinguishes when exposed to flame, dramatically reducing the severity of burn injuries. Minimising the percentage of the body that is injured by burns can greatly increase chances of survival.

### STATIC CONTROL - AS/NZS 1020:2023

The Standard defines recommendations for the control of static electricity. 100% cotton and 50%/50% cotton blend products are defined as suitable fabrics to manage the risk of static build up. If the wearer is prone to dry skin, especially in winter months, we strongly recommend that 100% Cotton workwear is worn against the skin. Synthetic undergarments may counteract this advantage so, where possible, we recommend the wearing of natural fibre undergarments.



Invest in your team's presentation with our range of cost effective, versatile and smart corporate wear from our leading suppliers.

We believe that a garment should be worn with confidence, and that's why our range includes the latest corporate styles in quality fabrics, which are easy to care for and wear.



## CUSTOMISED UNIFORMS & EMBROIDERY SERVICES

Our experienced customer service and embroidery staff can provide embroidery, screen printing, additional taping and alterations to your uniform orders according to your individual company needs.

We will co-ordinate all aspects of this service, from logo and employee name set up, through to artwork approvals, required customisations and order delivery.

Our fast turnaround times and quality embroidery / screen printing machines ensure you and your staff are looking professional and uniform in no time!



BOOMERANG



**THE BOOMERANG® RANGE OF WORKWEAR, FIRE RESISTANT (FR) CLOTHING, AND PPE IS PROUDLY DESIGNED AND MANUFACTURED IN PARTNERSHIP WITH COLE SUPPLIES PTY LTD - A NOONGAR OWNED AND OPERATED INDIGENOUS AUSTRALIAN COMPANY AND A SUPPLY NATION-CERTIFIED BUSINESS.**

Developed through extensive consultation with hundreds of mining companies, the Boomerang® range features high-quality cuts and designs, proudly displaying the distinctive Boomerang logo and tailored for Australian working environments.

As the exclusive distributor of the Boomerang® range, we help organisations meet their Indigenous supply quotas while fostering meaningful supply chain relationships with Aboriginal and Torres Strait Islander communities.



For years, Australian industries have relied on Bool to provide the safest protection against onsite hazards, namely arc flash and flash fire.

A range designed to withstand low light sources, strong heat, open arcs, chemical and static hazards on Australia's most danger prone sites.

Our parvotex fabric is the cornerstone of the Bool brand offering a self-extinguishing, breathable inherent FR solution, the perfect solution for Australia's hot, humid environment. This is uncompromised protection against unforeseen open electric arc incidents and flash fire events.



# PERFORMANCE SYSTEMS

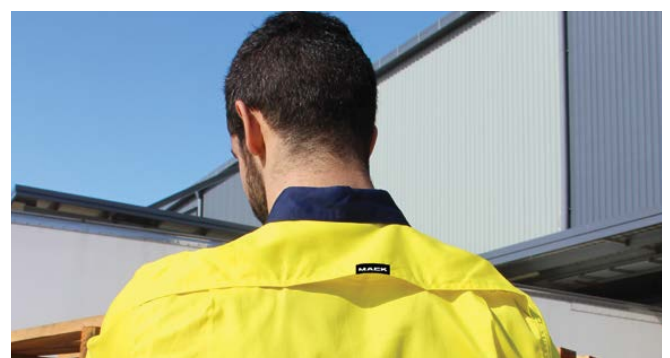
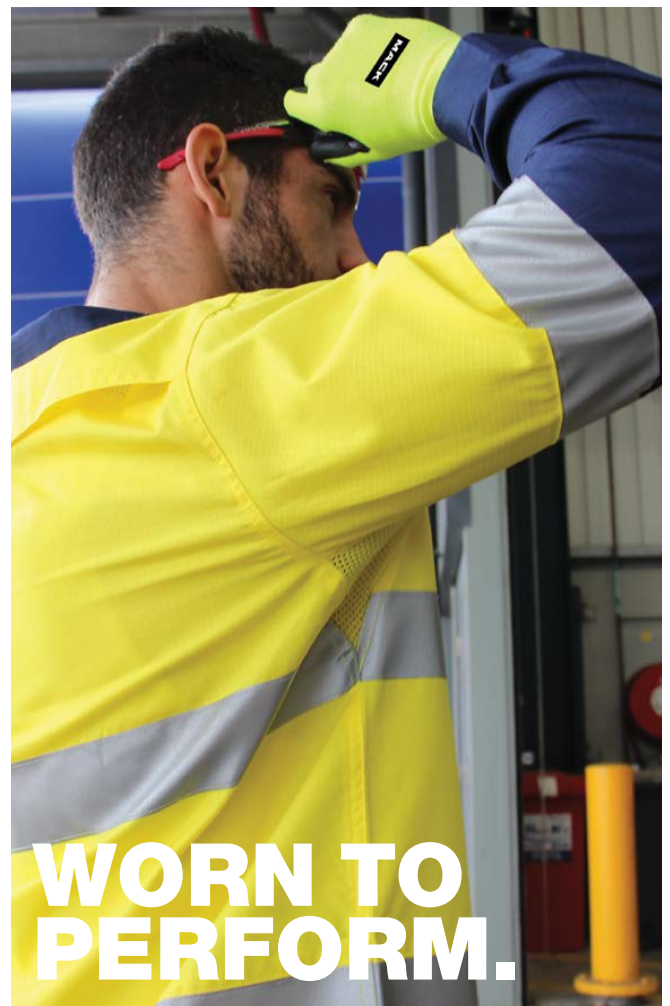
## *articulatedFIT™*

A body design system to allow natural bio mechanical movement of the lower body enhancing zonal flexibility.



## *radiatorTECH™*

Manufacturing and design principles which allow breathability and natural air movement keeping your body cooler while you work.







## exoSHIELD

Designed to protect and reinforce hard wearing zones on your clothing giving long lasting durability.



**DESIGNED  
TO ENDURE.**

## ANTI-STATIC

Garments made from fabrics that minimise the static build up in volatile environments. This is a safety requirement for most electricians.

## REFLECTIVE

Garment contains retro-reflective material to improve visibility in low light conditions.



# LIGHTWEIGHT HI-VIS VENTED SHIRTS



BOOMERANG



## MENS LIGHTWEIGHT RIPSTOP TAPED VENTED SHIRT

### FEATURES AND BENEFITS

- Lightweight and breathable
- Double hoop tape configuration & single hoop at sleeves
- 50mm reflective tape
- Mack® radiatorTech™ Horizontal back yoke and underarm venting
- Left hand side pocket with pen partition

WEIGHT: 145GSM

CODE	FABRIC	SIZE
MK9186497	100% Cotton Ripstop	S - 6XL

## MENS LIGHTWEIGHT RIPSTOP HOOP TAPED VENTED SHIRT

### FEATURES AND BENEFITS

- Lightweight and breathable
- Double hoop tape configuration and single hoop at sleeves
- 50mm reflective tape
- Horizontal back and underarm venting
- Left hand side pocket with pen partition

WEIGHT: 145GSM

CODE	FABRIC	SIZE
CW9186497	100% Cotton Ripstop	S - 5XL



WS Workwear



WS Workwear



## MENS LIGHTWEIGHT KOOLFLOW HOOP TAPED VENTED SHIRT

### FEATURES AND BENEFITS

- Lightweight and breathable
- Double hoop tape configuration & single hoop at sleeves
- Australian compliant retro reflective tape - 50mm
- Kooflow horizontal back venting and underarm mesh vents
- Twin mitred chest pockets with button closure

WEIGHT: 160GSM

CODE	FABRIC	SIZE
WS91864H8	100% Cotton Twill	2XS - 5XL

## MENS LIGHTWEIGHT KOOLFLOW SHORT SLEEVE HOOP TAPED VENTED SHIRT

### FEATURES AND BENEFITS

- Double hoop tape configuration & single hoop at sleeves
- Australian compliant retro reflective tape - 50mm
- Kooflow horizontal back venting and underarm mesh vents
- Twin mitred chest pockets with button closure
- LHS pocket with pen partition

WEIGHT: 160GSM

CODE	FABRIC	SIZE
WS91864H5	100% Cotton Twill	S - 5XL





**KOOLFLOW**

HORIZONTAL VENTING SYSTEM



**FEATURING**

**UNDERARM MESH VENTS**

Keeping you cool on the inside,  
while your body heat is released out

**KOOLFLOW HORIZONTAL VENTING**

Horizontal back venting system that provides  
maximum airflow entry with added cotton  
mesh panel for comfort across the back

**HORIZONTAL**

# HI-VIS NON VENTED SHIRTS



## MENS LIGHTWEIGHT HOOP TAPED SHIRT

### FEATURES AND BENEFITS

- Breathable non vented 2Tone long sleeve shirt
- Full body coverage option
- Reflective tape - 50mm for extra visibility
- Twin mitred chest pockets with button closure

WEIGHT: 160GSM

CODE	FABRIC	SIZE
WS9186448	100% Cotton Drill Preshrunk	XS - 5XL

## MENS TAPED COTTON SHIRT

### FEATURES AND BENEFITS

- Classic hard wearing long sleeve day/night shirt
- Double hoop tape configuration & single hoop at sleeves
- Reflective tape - 50mm for extra visibility
- Twin mitred chest pockets with button closure

WEIGHT: 190GSM

CODE	FABRIC	SIZES
MK9186441	100% Cotton Drill	XS - 6XL



## MENS HOOP TAPED SHIRT

### FEATURES AND BENEFITS

- Classic hard wearing long sleeve day/night shirt
- Double hoop tape configuration and single hoop at sleeves
- 50mm reflective tape
- Twin patch chest pockets with button closure
- Left hand side pocket with pen partition

WEIGHT: 190GSM

CODE	FABRIC	SIZE
CW9186441	100% Cotton Drill	XS - 6XL





# HI-VIS NON VENTED SHIRTS



## MENS HOOP TAPED CLASSIC SHIRT

### FEATURES AND BENEFITS

- Classic full hi vis day/night shirt
- Double hoop tape configuration & single hoop at sleeves
- Reflective tape - 50mm for extra visibility
- Twin mitred chest pockets with button closure

WEIGHT: 190GSM

CODE	FABRIC	SIZE
WS0918441	100% Cotton Drill Preshrunk	XS - 5XL



## MENS CLOSED FRONT HOOP TAPED GUSSET SLEEVE SHIRT

### FEATURES AND BENEFITS

- 2Tone long gusset sleeve shirt
- Closed front with button closure
- Double hoop tape configuration & single hoop at sleeves
- Reflective tape - 50mm for extra visibility
- Twin mitred chest pockets with button closure

WEIGHT: 190GSM

CODE	FABRIC	SIZE
WS9186442	100% Cotton Drill Preshrunk	XS - 6XL



## MENS H TAPED CLASSIC SHIRT

### FEATURES AND BENEFITS

- 2Tone H tape shirt for extra over head visibility
- H tape configuration & single hoop at sleeves
- Reflective tape - 50mm for extra visibility
- Twin mitred chest pockets with touch tape

WEIGHT: 190GSM

CODE	FABRIC	SIZE
WS9586443	100% Cotton Drill Preshrunk	S - 5XL



## MENS H FRONT X BACK TAPED CLASSIC SHIRT

### FEATURES AND BENEFITS

- Hi vis colour
- X back tape configuration with extra hem tape
- Reflective tape - 50mm for extra visibility
- Rail transport compliant tape configuration
- Twin mitred chest pockets with button closure

WEIGHT: 190GSM

CODE	FABRIC	SIZE
WS0938442	100% Cotton Drill Preshrunk	S - 5XL

# POLOS & T-SHIRTS



## SHORT SLEEVE H TAPED COTTON T-SHIRT

### FEATURES AND BENEFITS

- 100% cotton jersey
- 50mm stretch retro-reflective tape in "H" body configuration
- Sleeve hoops - compliant to AS 4602.1.2011
- Left hand side patch pockets with pen partition

WEIGHT: 180GSM

CODE	FABRIC	SIZE
MK9586487	100% Cotton Jersey	XS-6XL



## SHORT SLEEVE TAPED VENTED COTTON POLO

### FEATURES AND BENEFITS

- Vented 2Tone cotton jersey polo
- Segmented "hoop" taped configuration & single hoop at sleeves
- Mack® radiatorTech™ - Back yoke and underarms venting
- Left hand side chest pocket
- 3 buttons placket
- Rib hem cuff with tipping

WEIGHT: 180GSM

CODE	FABRIC	SIZE
MK9186486	100% Cotton Jersey	XS-6XL



## TAPED VENTED COTTON POLO

### FEATURES AND BENEFITS

- Vented 2Tone cotton jersey polo
- Segmented "hoop" taped configuration & single hoop at sleeves
- Mack® radiatorTech™ Horizontal mesh back yoke venting
- Left hand side chest pocket
- 3 buttons placket
- Rib hem cuff with tipping

WEIGHT: 180GSM

CODE	FABRIC	SIZE
MK9186485	100% Cotton Jersey	XS-6XL



## TAPED VENTED COTTON JERSEY POLO

### FEATURES AND BENEFITS

- Vented 2Tone cotton jersey polo
- Segmented "hoop" taped configuration & single hoop at sleeves
- Underarms venting
- Horizontal mesh back yoke venting
- Left hand side chest pocket
- 3 buttons placket
- Rib hem cuff with tipping

WEIGHT: 180GSM

CODE	FABRIC	SIZE
CW9186485	100% Cotton Jersey	XS-5XL





## SHORT SLEEVE MICROMESH POLO

### FEATURES AND BENEFITS

- Lightweight, easy care fabric option and quick drying
- 2Tone micromesh short sleeve polo
- Contrast panel at front only
- Knitted collar and cuff (collar with 2x stripes)
- RHS chest pockets with pen partition

WEIGHT: 160GSM

CODE	FABRIC	SIZE
WS06473PS	100% Polyester Micromesh	XS - 5XL



## MICROMESH POLO

### FEATURES AND BENEFITS

- Lightweight, easy care fabric option
- Quick drying
- 2Tone micromesh long sleeve polo
- Knitted collar and cuff (collar with 2 x stripes)
- Right hand side chest pockets with pen partition

WEIGHT: 160GSM

CODE	FABRIC	SIZE
WS06471PS	100% Polyester Micromesh	S - 5XL



## HOOP TAPED MICROMESH POLO

### FEATURES AND BENEFITS

- Lightweight, easy care fabric option
- Quick drying
- 2Tone micromesh long sleeve polo
- Double hoop tape configuration & single hoop at sleeves
- Reflective tape - 50mm for extra visibility

WEIGHT: 160GSM

CODE	FABRIC	SIZE
WS9186471	100% Polyester Micromesh	S - 6XL



## SHORT SLEEVE VENTED COTTON BACKED POLYESTER POLO

### FEATURES AND BENEFITS

- Cool, breathable & moisture wicking
- Vented cotton back short sleeve polo
- Under sleeve and side mesh panels
- Right hand side chest pockets with pen partition

CODE	FABRIC	SIZE
WS0006486	55% Cotton, 45% Polyester Micromesh Cottonback	S - 5XL

# POLOS & T-SHIRTS



## VENTED COTTON BACKED POLYESTER POLO

### FEATURES AND BENEFITS

- Cool, breathable & moisture wicking
- 2Tone vented cotton back long sleeve polo
- Under sleeve & side mesh panels
- 3 buttons Placket
- Right hand side chest pockets with pen partition

CODE	FABRIC	SIZE
WS0006484	55% Cotton, 45% Polyester Micromesh Cottonback	S - 5XL



## HOOP TAPED COTTON BACKED POLO

### FEATURES AND BENEFITS

- Cool, breathable & moisture wicking
- 2Tone cotton back long sleeve polo
- Double hoop tape configuration & single hoop at sleeves
- Reflective tape - 50mm for extra visibility

CODE	FABRIC	SIZE
WS9186481	55% Cotton, 45% Polyester Micromesh Cottonback	S - 5XL



## SHORT SLEEVE HOOP TAPED COTTON BACKED POLO

### FEATURES AND BENEFITS

- Cool, breathable & moisture wicking
- 2Tone cotton back short sleeve polo
- Double hoop tape configuration & single hoop at sleeves
- Reflective tape - 50mm for extra visibility

CODE	FABRIC	SIZE
WS9186483	55% Cotton, 45% Polyester Micromesh Cottonback	S - 5XL





## BOOMERANG

MODERN FIT



### MENS LIGHTWEIGHT COTTON DRILL UTILITY PANTS

#### FEATURES AND BENEFITS

- Lightweight drill modern fit pant
- Mitred front side pockets
- Inseam back yoke pockets
- RHS back pocket with zipper & LHS back tool pocket

WEIGHT: 190GSM

CODE	FABRIC	R SIZES	S SIZES
CW0003316	100% Cotton Drill	82R - 112R	87S - 132S

## BOOMERANG

MODERN FIT



### MENS LIGHTWEIGHT COTTON DRILL TAPED UTILITY PANTS

#### FEATURES AND BENEFITS

- Lightweight drill modern fit pant
- Single hoop 50mm reflective tape above knee
- Mitred front side pockets
- Inseam back yoke pockets
- RHS with zipper closure and LHS tool pocket only

WEIGHT: 190GSM

CODE	FABRIC	R SIZES	S SIZES
CW0008316	100% Cotton Drill	82R - 112R	87S - 132S



MODERN FIT



### MENS CANVAS CARGO PANTS

#### FEATURES AND BENEFITS

- New modern canvas fit pant
- Angled Front side pockets with RHS coin pocket
- YKK nylon zipper
- Shaped back yoke
- Two back patch pocket
- Cargo pockets with pocket flaps and additional utility pockets

WEIGHT: 270GSM

CODE	FABRIC	R SIZES	S SIZES
MK0003338	100% Cotton Canvas, Preshrunk	82R - 112R	87S - 132S



MODERN FIT



### MENS TAPED CANVAS CARGO PANTS

#### FEATURES AND BENEFITS

- New modern canvas fit pant
- Single hoop Reflective tape 50mm above knees
- Angled Front side pockets with RHS coin pocket
- YKK nylon zipper
- Cargo pockets with pocket flaps and additional utility pockets

WEIGHT: 270GSM

CODE	FABRIC	R SIZES	S SIZES
MK0008338	100% Cotton Canvas, Preshrunk	72R - 112R	87S - 132S

# PANTS & SHORTS



BOOMERANG

MODERN FIT



CLASS N-E  
NIGHT USE  
ENSEMBLE  
LEVEL 2



SUN  
PROTECTION



STATIC  
CONTROL



REFLECTIVE



## MENS COTTON CANVAS TAPED CARGO PANTS

### FEATURES AND BENEFITS

- Modern fit cotton cargo with slimmer legs
- Single hoop - 50mm reflective tape AS/NZS 1906.4:2003
- Mitred back pockets
- Multi cargo pockets with pocket flap at right leg
- Right back ruler / tool pocket

WEIGHT: 270GSM

CODE	FABRIC	R SIZES	S SIZES	L SIZES
CW0008315	100% Cotton Canvas	82R - 112R	87S - 132S	79L - 94L



WS Workwear

MODERN FIT



SUN  
PROTECTION



STATIC  
CONTROL



## MENS MODERN CANVAS CARGO PANTS

### FEATURES AND BENEFITS

- Angled front side pockets with RHS coin pocket
- YKK nylon zipper
- Shaped back yoke
- Two back patch pocket
- Cargo pockets with pocket flaps & additional utility pockets

WEIGHT: 270GSM

CODE	FABRIC	R SIZES	S SIZES
WS0003338	100% Cotton Canvas	72R - 112R	87S - 132S



WS Workwear

DURABLE  
CANVAS



SUN  
PROTECTION



STATIC  
CONTROL



## MENS MID WEIGHT CANVAS CARGO PANTS

### FEATURES AND BENEFITS

- Flat front cargo canvas pant
- YKK zipper
- Angled front side pockets with RHS coin pocket
- Internal contrast waistband facing and pocket flap facings

WEIGHT: 270GSM

CODE	FABRIC	R SIZES	S SIZES	L SIZES
OW0003333	100% Cotton Canvas Preshrunk	72R - 112R	87S - 132S	79L - 94L



WS Workwear

DURABLE  
CANVAS



CLASS N-E  
NIGHT USE  
ENSEMBLE  
LEVEL 2



SUN  
PROTECTION



STATIC  
CONTROL



REFLECTIVE



## MENS MID WEIGHT TAPED CANVAS CARGO PANTS

### FEATURES AND BENEFITS

- Flat front cargo canvas pant
- Single hoop reflective tape - 50mm above knees
- Internal contrast waistband facing and pocket flap facings
- YKK zipper
- Angled front side pockets with RHS coin pocket

WEIGHT: 270GSM

CODE	FABRIC	R SIZES	S SIZES	L SIZES
OW0008333	100% Preshrunk Cotton Canvas	72R - 112R	87S - 132S	79L - 94L





DURABLE  
CANVAS



## MENS "TRADIES MATE" PANTS WITH CORDURA®

### FEATURES AND BENEFITS

- Flat front pant
- Cordura® reinforced patches at cargo utility pockets and knee patches
- RHS double ruler pocket with utility loop and knee patches
- LHS cargo pocket with additional mobile phone pocket

WEIGHT: 260GSM

CODE	FABRIC	R SIZES	S SIZES	L SIZES
WS0003337	100% Preshrunk Cotton Canvas	72R - 112R	87S - 132S	79L - 94L



DURABLE  
CANVAS



## MENS MID WEIGHT CANVAS CARGO SHORTS

### FEATURES AND BENEFITS

- Flat front cargo canvas short
- Internal contrast waistband facing and pocket flap facings
- Angled front side pockets with right hand side coin pocket
- YKK zipper

WEIGHT: 270GSM

CODE	FABRIC	R SIZE
OW0007773	100% Cotton Canvas Preshrunk	77R - 102R



CLASSIC



## MENS CLASSIC FRONT PLEAT DRILL PANTS

### FEATURES AND BENEFITS

- Single pleat front pant
- Heavy weight drill trouser
- Concealed button closure
- YKK zipper
- Single right back hip pocket

WEIGHT: 310GSM

CODE	FABRIC	R SIZES	S SIZES	L SIZES
WS0003331	100% Cotton Drill Preshrunk	72R - 112R	87S - 132S	79L - 94L



# PANTS & SHORTS

**WS Workwear**

**CLASSIC FIT**



CLASS N-E  
NIGHT USE  
ENSEMBLE  
LEVEL 2



SUN  
PROTECTION



STATIC  
CONTROL



REFLECTIVE



## MENS CLASSIC TAPED DRILL PANTS

### FEATURES AND BENEFITS

- Single pleat front pant
- Heavy weight drill trouser
- Single hoop reflective tape - 50mm above knees
- Concealed button closure

WEIGHT: 310GSM

CODE	FABRIC	R SIZES	S SIZES	L SIZES
WS0008331	100% Cotton Drill Preshrunk	72R - 112R	87S - 132S	79L - 94L

**WS Workwear**

**CLASSIC**



SUN  
PROTECTION



STATIC  
CONTROL



## MENS CLASSIC CARGO DRILL PANTS

### FEATURES AND BENEFITS

- Flat front pant
- Heavy weight drill cargo trouser
- Waistband button extension
- YKK zipper
- Two back patch pockets with touch tape closure

WEIGHT: 310GSM

CODE	FABRIC	R SIZES	S SIZES	L SIZES
WS0003339	100% Cotton Drill Preshrunk	72R - 112R	87S - 132S	79L - 94L

**CARGO POCKET**  
with in-built mobile phone pocket







NEW

MODERN FIT

NEW



## MENS DARK DENIM STRETCH JEANS

### FEATURES AND BENEFITS

- New dark & durable cotton stretch denim in modern fit
- ArticulatedFIT™ feature including the shaped back yoke and knee panels to enhance body movements
- Traditional 5 pockets Jean for the required extra storage
- Wider belt loops for extra strength
- Triangle plastic key holder applied to right hand side belt loop

WEIGHT: 440GSM

CODE	FABRIC	R SIZES	S SIZES	L SIZES
MKIJN0001	98% Cotton, 2% Elastane Denim	82R - 112R	87S - 132S	79L - 94L



BOOMERANG



NEW

MODERN FIT



## MENS STRAIGHT LEG STRETCH JEANS

### FEATURES AND BENEFITS

- Dark denim in traditional straight leg cut
- 5 pockets jean with coin pocket at RHS
- Knee darts
- Twin back patch pockets with detail stitching & seam
- Contrast tan colour twin needle stitching on side seams rises and pockets for extra reinforcement

WEIGHT: 440GSM

CODE	FABRIC	R SIZES	S SIZES
CW0003317	98% Cotton, 2% Elastane Denim	82R - 112R	87S - 132S



BOOMERANG

NEW

MODERN FIT



## MENS TAPED STRAIGHT LEG STRETCH JEANS

### FEATURES AND BENEFITS

- New dark denim in traditional straight leg cut
- Single hoop 50mm stretch reflective tape above knee
- Twin back patch pocket with detail stitching
- Knee darts
- Reinforced back hem

WEIGHT: 440GSM

CODE	FABRIC	R SIZES	S SIZES
CW0008317	98% Cotton, 2% Elastane Denim	77R - 112R	87S - 132S



WS Workwear



CLASSIC DENIM



## MENS CLASSIC DENIM CUT JEANS

### FEATURES AND BENEFITS

- Strong & durable
- Traditional straight leg cut
- Straight waistband with metal stud closure
- Front rounded side pocket with RHS coin pocket
- Metal YKK zipper
- Twin back patch pocket with detail stitching

WEIGHT: 460GSM

CODE	FABRIC	R SIZES	S SIZES	L SIZES
OW0003332	100% Cotton Denim	72R - 112R	87S - 132S	79L - 94L

# DENIM JEANS

**WS Workwear**

CLASSIC  
DENIM



## MENS TAPED CLASSIC COTTON JEANS

### FEATURES AND BENEFITS

- Traditional straight leg cut
- Single hoop reflective tape - 50mm above knees
- Straight waistband with metal stud closure
- Metal YKK zipper
- Twin back peak pocket with detail

WEIGHT: 460GSM

CODE	FABRIC	R SIZES	S SIZES	L SIZES
OW0008332	100% Cotton Denim	72R - 112R	87S - 132S	79L - 94L

**WS Workwear**

CLASSIC STRETCH  
DENIM



## MENS CLASSIC COTTON STRETCH JEANS

### FEATURES AND BENEFITS

- Comfort stretch traditional straight leg cut
- Shaped waistband with metal stud closure
- Front rounded side pocket with right hand side coin pocket
- Metal YKK Zipper
- Twin back patch pocket

WEIGHT: 450GSM

CODE	FABRIC	R SIZES	S SIZES	L SIZES
OW0003336	98% Cotton, 2% Elastane Denim	72R - 112R	87S - 132S	79L - 94L

**WS Workwear**

CLASSIC STRETCH  
DENIM



## MENS TAPED COTTON STRETCH JEANS

### FEATURES AND BENEFITS

- Comfort stretch
- Traditional straight leg cut
- Single hoop reflective tape - 50mm above knees
- Shaped waistband with metal stud closure
- Metal YKK zipper

WEIGHT: 450GSM

CODE	FABRIC	R SIZES	S SIZES	L SIZES
OW0008336	98% Cotton, 2% Elastane Denim	77R - 112R	87S - 132S	79L - 94L

**WS Workwear**



## MENS BIO MOTION TAPED DRILL CARGO PANTS

### FEATURES AND BENEFITS

- Flat front heavy weight drill cargo pant
- Bio motion - Dual hoop compliant reflective tape
- Waistband button extension
- YKK nylon zipper
- Twin cargo pockets with flaps and dart detail

WEIGHT: 310GSM

CODE	FABRIC	R SIZES	S SIZES
WS0004339	100% Cotton Drill	72R - 112R	87S - 132S







# WOMENS VENTED SHIRTS & POLOS



## WOMENS LIGHTWEIGHT TAPED RIPSTOP VENTED SHIRT

### FEATURES AND BENEFITS

- Lightweight & breathable
- Double hoop tape configuration & single hoop at sleeves
- 50mm Reflective Tape
- Mack® radiatorTech™ Horizontal back and underarm venting
- Left hand side pocket with pen partition

WEIGHT: 145GSM

CODE	FABRIC	SIZES
MKL918697	100% Cotton Ripstop	6 - 22



BOOMERANG



## WOMENS LIGHTWEIGHT HOOP TAPED VENTED SHIRT

### FEATURES AND BENEFITS

- Lightweight and breathable
- Double hoop tape configuration and single hoop at sleeves
- 50mm Reflective tape
- Horizontal back and underarm venting
- Left hand side pocket with pen partition

WEIGHT: 145GSM

CODE	FABRIC	SIZE
CWL918697	100% Cotton Ripstop	6-22



## WOMENS LIGHTWEIGHT HOOP TAPED KOOLFLOW SHIRT

### FEATURES AND BENEFITS

- Womens 2Tone long sleeve shirt
- Double hoop tape configuration & single hoop at sleeves
- Reflective tape - 50mm for extra visibility
- Kooflow venting (vertical back venting)
- Underarm mesh vents

WEIGHT: 160GSM

CODE	FABRIC	SIZE
LW9186498	100% Cotton Drill Preshrunk	8 - 22



## WOMENS LIGHTWEIGHT TAPED VENTED COTTON POLO

### FEATURES AND BENEFITS

- Hi-visibility: Day/Night (D/N) class
- UPF50+ "Excellent" sun protection
- 50mm heat seal segmented retro-reflective tape in hoop configuration
- Anti static - 100% cotton
- 2Tone design across the body and sleeves
- Mack® radiatorTech™ feature - Back yoke venting for additional breathability and air flow management

WEIGHT: 180GSM

CODE	FABRIC	SIZES
MKL918685	100% Cotton Jersey	8 - 22



# WOMENS NON-VENTED SHIRTS



WS Workwear



CLASS D/N  
DAY OR NIGHT USE  
LEVEL 1



SUN  
PROTECTION



STATIC  
CONTROL



CLASS D/N  
DAY OR NIGHT USE  
LEVEL 1



SUN  
PROTECTION



STATIC  
CONTROL



REFLECTIVE



## WOMENS TAPED COTTON SHIRT

### FEATURES AND BENEFITS

- Womens 2Tone long sleeve shirt
- Double hoop tape configuration & single hoop at sleeves
- Reflective Tape - 50mm for extra visibility
- Twin mitred chest pockets with button closure
- Left hand side pocket with pen partition

WEIGHT: 190GSM

CODE	FABRIC	SIZES
MKL918641	100% Cotton Drill Preshrunk	8 - 22

## WOMENS HOOP TAPED CLASSIC DRILL SHIRT

### FEATURES AND BENEFITS

- Womens 2Tone long sleeve shirt
- Double hoop tape configuration & single hoop at sleeves
- Reflective tape - 50mm for extra visibility
- Twin mitred chest pockets with button closure
- LHS pocket with pen partition

WEIGHT: 190GSM

CODE	FABRIC	SIZE
LW9186441	100% Cotton Drill Preshrunk	8 - 22



# WOMENS PANTS

**WS Workwear**

**DURABLE CANVAS**



## WOMENS MID WEIGHT CANVAS CARGO PANTS

### FEATURES AND BENEFITS

- Flat front cargo canvas pant
- Internal contrast waistband facing and pocket flap facings
- YKK zipper
- Angled front side pockets with coin pocket
- Twin cargo patch pockets with angled peak flaps and dart detail

WEIGHT: 270GSM

CODE	FABRIC	SIZES
LW0003333	100% Cotton Canvas Preshrunk	8 - 22

**WS Workwear**

**DURABLE CANVAS**



## WOMENS MID WEIGHT TAPED CANVAS CARGO PANTS

### FEATURES AND BENEFITS

- Flat front cargo canvas pant
- Single hoop reflective tape - 50mm above knees
- YKK zipper
- Angled front side pockets with coin pocket
- Twin cargo patch pockets with angled peak flaps and dart

WEIGHT: 270GSM

CODE	FABRIC	SIZES
LW0008333	100% Cotton Canvas Preshrunk	8 - 22

**WS Workwear**

**NEW**

**MODERN FIT**



**IMPROVED FIT**



## WOMENS MODERN CANVAS CARGO PANTS

### FEATURES AND BENEFITS

- NEW ladies modern fit cargo pant
- Angled front side pockets with RHS coin pocket
- YKK nylon zipper
- Shaped back yoke and two back patch pockets
- Cargo pockets with pocket flaps and additional utility pockets

WEIGHT: 270GSM

CODE	FABRIC	SIZE
LW0003338	100% Cotton Canvas, Preshrunk	8-22

**WS Workwear**

**CLASSIC**



## WOMENS HEAVY WEIGHT COTTON DRILL PANTS

### FEATURES AND BENEFITS

- Heavy weight drill trouser
- Concealed button closure
- YKK zipper
- Angled front side pockets
- Right hand side hidden coin pocket

WEIGHT: 310GSM

CODE	FABRIC	SIZES
LW0003331	100% Cotton Drill Preshrunk	6 - 22





CLASSIC



CLASS N-E  
NIGHT USE  
ENSEMBLE  
LEVEL 2



SUN  
PROTECTION



STATIC  
CONTROL



REFLECTIVE



## WOMENS HEAVY WEIGHT TAPED COTTON DRILL PANTS

### FEATURES AND BENEFITS

- Heavy weight drill trouser
- Single hoop reflective tape - 50mm above knees
- Concealed button closure
- YKK zipper
- Angled front side pockets

WEIGHT: 310GSM

CODE	FABRIC	SIZES
LW0008331	100% Cotton Drill Preshrunk	6 - 24



SUN  
PROTECTION

NEW

MODERN FIT



## WOMENS DARK DENIM STRETCH JEANS

### FEATURES AND BENEFITS

- UPF50+ "Excellent" sun protection
- MACK® articulatedFIT™ feature including the shaped back yoke and knee panels to enhance body movements
- Front side pocket with coin pocket at RHS
- Twin back patch pocket with detail stitching

WEIGHT: 440GSM

CODE	FABRIC	SIZES
MKL003337	98% Cotton, 2% Elastane Denim	6 - 22



NEW

TAPERED FIT



SUN  
PROTECTION

IMPROVED  
FIT



## WOMENS STRAIGHT LEG STRETCH JEANS

### FEATURES AND BENEFITS

- Curved waistband with metal stud
- Front side pocket with coin pocket at RHS
- Metal rivets at each end of front pockets
- Twin back patch pocket with detail stitching
- Tan thicker thread
- Knee darts

WEIGHT: 430GSM

CODE	FABRIC	SIZE
CWL003337	98% Cotton, 2% Elastane Denim	8-22



SUN  
PROTECTION



EASY FIT

CLASSIC STRETCH  
DENIM



## WOMENS BOOT CUT COTTON STRETCH JEANS

### FEATURES AND BENEFITS

- Women "boot cut" stretch jean
- Shaped waistband with metal stud closure
- Metal YKK zipper
- Front rounded side pocket with coin pocket
- Metal rivets at each end of front pockets

WEIGHT: 13.05oz 447GSM

CODE	FABRIC	SIZE
LW0003336	98% Cotton 2% Elastane Denim	8-22

# MATERNITY WEAR



## WOMENS TAPED MATERNITY SHIRT

### FEATURES AND BENEFITS

- Vented underarms and back yoke
- Day/night use
- CSR reflective tape
- Front box pleats

WEIGHT: 155GSM

CODE	FABRIC	SIZES
NNWSL6010	100% Cotton Drill	6 - 24

## MATERNITY CARGO COTTON DRILL PANTS

### FEATURES AND BENEFITS

- Cargo pocket
- Reinforced stress points
- Double layer rib knit waist panel with wide elastic insert

WEIGHT: 245GSM

CODE	FABRIC	SIZES
NNWPL0810	100% Cotton Drill	6 - 24

**Bisley**  
WORKWEAR



**Bisley**  
WORKWEAR



## WOMENS TAPED MATERNITY DRILL SHIRT

### FEATURES AND BENEFITS

- Reflective taped hoop pattern
- Maternity fit with inverted front pleats
- Two button down chest pockets
- Pen division on left hand side chest pocket
- Two piece structured collar
- Two button adjustable sleeve cuff

WEIGHT: 190GSM

CODE	FABRIC	SIZE
BILM6456T	100% Cotton Preshrunk Drill	6-24

## WOMENS TAPED MATERNITY DRILL WORK PANTS

### FEATURES AND BENEFITS

- Reflective tape around lower leg
- Maternity fit with double layer soft knit fabric tummy band
- Two angled side pockets
- Two back patch pockets
- Mobile phone pocket on right hand side

WEIGHT: 240GSM / 88% Polyester, 12% Spandex 260GSM

CODE	FABRIC	SIZE
BILM6009T	100% Cotton Preshrunk Drill	6-25



**WS Workwear**

CLASSIC FIT



## MENS LIGHTWEIGHT HOOP TAPED COVERALLS

### FEATURES AND BENEFITS

- Light weight coverall
- 2Tone lightweight coverall
- Raglan sleeve with contrast lower body and sleeves
- Reflective tape - 50mm for extra visibility
- Full open front with concealed plastic studs closure

WEIGHT: 190GSM

CODE	FABRIC	R SIZES	S SIZES	L SIZES
WS9186124	100% Cotton Drill Preshrunk	77R - 112R	87S - 132S	84L - 94L

**WS Workwear**

CLASSIC FIT



## MENS H & X BACK TAPED COVERALLS

### FEATURES AND BENEFITS

- 2Tone heavy weight action back overall
- V neck open front with concealed metal studs closure
- H tape configuration at front and X back at braces
- Leg tapes above knee patches

WEIGHT: 310GSM

CODE	FABRIC	COLOUR	R SIZES	S SIZES	L SIZES
WS6115PRT	100% Cotton Drill Preshrunk	ON	77R - 117R	87S - 132S	79L - 94L
		YN	77R - 112R	97S - 132S	84L - 94L



# JACKETS & VESTS



## XENON POLYESTER FLEECE HOODIE

### FEATURES AND BENEFITS

- Two tone high visibility fleece hoodie
- exo SHIELD has been incorporated in the design of this garment at shoulder panels to provide reinforcement in high abrasion areas
- Angled front yoke panel with reflective piping for additional visibility
- Secured hood cord to for safety when working with machinery
- Retro-reflective piping for additional visibility

WEIGHT: 280GSM

CODE	FABRIC	SIZES
MKALH0002	100% Polyester Fleece	S - 6XL



WS Workwear



## H TAPED WOOL BLUEY JACKET

### FEATURES AND BENEFITS

- Soft and comfortable day/night wool blend
- 2Tone wool blend jacket
- "H" tape configuration with single hoop tape at sleeves
- Internal flannel lining
- Front nylon zip closure

WEIGHT: 465GSM (Orange & Yellow), 422GSM (Navy)

CODE	FABRIC	SIZES
OW9586551	90% Wool, 10% Polyester with AC & W/R coating on face	S - 6XL



WS Workwear



## 2TONE H TAPED THOMO JACKET

### FEATURES AND BENEFITS

- Waterproof 2Tone taped jacket
- Quilted padded lining
- Reflective taped jacket in hoop and connecting over the shoulder tape configuration with double hoop at sleeves
- Polar fleece collar with fold-away hood

WEIGHT: 150D

CODE	FABRIC	SIZE
OW9686580	100% Polyester Oxford with PU Coating	S-6XL





# SUSTAINABLE JACKETS & VESTS



## QUARTER ZIP RECYCLED POLYESTER FLEECE TAPED JUMPER

### FEATURES AND BENEFITS

- 1/4 zip 2Tone jumper
- Reflective tape across the body and arms
- UPF50+ "Excellent" sun protection
- Kangaroo pocket with twin needle contrast stitching
- Contrast inner collar, lower body and sleeves

WEIGHT: 280GSM

CODE	FABRIC	SIZES
MK9186528	100% Polyester Fleece	S - 6XL



## XENON TAPED RECYCLED SOFTSHELL JACKET

### FEATURES AND BENEFITS

- 2Tone high visibility softshell jacket
- Adjustable cuff closure
- Shaped longer back tail
- Segmented heat seal reflective tape for additional flexibility in movement and high visibility

CODE	FABRIC	SIZES
MKXEJ0002	Outer Face: 100% Recycled Polyester Bonded Inner Face: 100% Recycled Polyester Micro Fleece	S - 6XL



## XENON TAPED RECYCLED SOFTSHELL VEST

### FEATURES AND BENEFITS

- 2Tone high visibility softshell vest
- Sew on reflective tape in hoop and over the shoulder configuration for additional high visibility

CODE	FABRIC	SIZES
MKXE0002	Outer Face: 100% Recycled Polyester Bonded Inner Face: 100% Recycled Polyester Micro Fleece	XS - 6XL



### SUSTAINABILITY

THE USE OF THE RECYCLED RAW MATERIAL IN THIS PRODUCT HAS BEEN INDEPENDENTLY VERIFIED AND CERTIFIED TO MEET THE INTERNATIONAL GLOBAL RECYCLED STANDARD

ASR-102-V3.0-2021.11.16  
THE GRS CERTIFICATION GUARANTEES  
THE FABRIC USED MEETS

- The requirements of the Content Claim Standard
  - % Of content for recycled materials
- Traceability in supply chain from recycling to final product
- Has ethical and responsible production



# SUSTAINABLE JACKETS & VESTS

**WS Workwear**



**WS Workwear**



## BOSTON RECYCLED POLYESTER OXFORD REVERSIBLE H TAPED VEST

### FEATURES AND BENEFITS

- Hi vis taped vest with reversible polar fleece lined inner vest
- Outer vest with ID chest pocket and dual entry waist patch pockets
- Inner vest with slanting waist pocket and longer back tail

CONSTRUCTION: 150D

CODE	FABRIC	SIZE
WS9785860	100% Recycled Polyester Oxford with PU coating	S-6XL

## ZIP FRONT RECYCLED POLYESTER TAPED SAFETY VEST

### FEATURES AND BENEFITS

- Hi vis taped vest with ID chest pocket
- Hi vis vest outer with combination of "Hoop" and over the shoulder tape configuration
- Australian compliant retro reflective tape - 50mm

WEIGHT: 120GSM

CODE	FABRIC	SIZE
WS0008240	100% Recycled Polyester Tricot	S-4XL

SAFETY WORKWEAR



## RECYCLED POLYESTER DAY SAFETY VEST

### FEATURES AND BENEFITS

- Safety vest day use
- Complies to AS 4602.1:2011 Class D
- Retail self hand packaging

WEIGHT: 120GSM

CODE	FABRIC	SIZES
FRDARVEST	100 % Recycled Polyester	S - 4XL

## RECYCLED POLYESTER DAY/NIGHT TAPED SAFETY VEST

### FEATURES AND BENEFITS

- Hi vis taped day/night safety vest
- "H" pattern reflective
- Reflective Tape - 50mm for extra visibility

WEIGHT: 120GSM

CODE	FABRIC	SIZES
FRDNRVEST	100 % Recycled Polyester Tricot	S - 4XL





## RECYCLED POLYESTER FLYING JACKET

### FEATURES AND BENEFITS

- Waterproof 2Tone flying jacket
- Quilted padded lining
- Fold-away hood at internal neck seam
- Front closure with under storm flap
- Ribbed cuffs and waistband

CONSTRUCTION: 150D

CODE	FABRIC	SIZE
WS0006520	100% Recycled Polyester Oxford with PU coating	S-6XL



## RECYCLED POLYESTER H TAPED FLYING JACKET

### FEATURES AND BENEFITS

- Waterproof 2Tone flying jacket
- Quilted padded lining
- Reflective taped jacket in "H" tape configuration with single hoop at sleeves
- Fold-away hood at internal neck seam
- Front closure with under storm flap

CONSTRUCTION: 150D

CODE	FABRIC	SIZE
WS9586520	100% Recycled Polyester Oxford with PU coating	S-6XL



## THOMO RECYCLED POLYESTER H TAPED JACKET

### FEATURES AND BENEFITS

- Quilted 3/4 length 2Tone waterproof jacket
- Australian compliant retro reflective tape
- Adjustable sleeve tab cuff with internal storm cuff in 2x2 rib 50mm

CONSTRUCTION: 150D

CODE	FABRIC	SIZE
WS9686580	100% Recycled Polyester Oxford with PU coating	S-6XL



## CHICAGO BIOMOTION RECYCLED POLYESTER TAPED RAIN JACKET

### FEATURES AND BENEFITS

- Waterproof and breathable jacket
- Reflective tape - combined Hoop and H tape configuration at body with bio motion hoop tape at sleeves
- Mesh lining
- Fold-away hood

CONSTRUCTION: 150D

CODE	FABRIC	SIZE
WS0968509	100% Recycled Polyester Oxford with PU coating	S-6XL

# WET WEATHER / RAINWEAR



## CHICAGO RECYCLED POLYESTER TAPED RAIN PANTS

### FEATURES AND BENEFITS

- Waterproof and breathable pant
- Reflective Tape - double hoop tape configuration at lower legs
- Elasticated waistband with drawcord and adjuster
- Front side entry pockets
- Legs cuff with zipper and press stud for adjustment

CONSTRUCTION: 150D

CODE	FABRIC	SIZES
WS0968309	100% Recycled Polyester Oxford with PU coating	S - 6XL



4IN1  
JACKET



### WORN IN 4 WAYS

- 1 Hi vis jacket with zip out polar fleece vest for complete package
- 2 Hi vis outer jacket with mesh lining
- 3 Hi vis sleeveless vest with polar fleece lining
- 4 Polar fleece sleeve vest (reversed) with hand warmer pockets

## OXFORD 4 IN 1 RECYCLED POLYESTER HOOP TAPED JACKET

### FEATURES AND BENEFITS

- Versatile 3/4 Length 2Tone outer waterproof jacket with reversible polar fleece lined inner vest
- Jacket in hoop tape configuration and single hoop at sleeves
- Reversible vest - full hi vis hoop and over the shoulders tape configuration at outer face and polar fleece inner lining
- Outer and inner vest with slanting waist pockets

CONSTRUCTION: 150D

CODE	FABRIC	SIZE
WS9186590	100% Recycled Polyester Oxford with PU coating	XXS-6XL





# RAINWEAR

**WS Workwear**



## H TAPED CHICAGO WATERPROOF JACKET

### FEATURES AND BENEFITS

- Waterproof and breathable jacket
- Reflective Tape - combined Hoop and H tape configuration at body with bio motion hoop tape at sleeves
- Mesh lining
- Fold-away hood

CONSTRUCTION: 150D

CODE	FABRIC	SIZES
OW0968509	100% Polyester	S - 6XL

**WS Workwear**



## TAPED PVC WATERPROOF JACKET

### FEATURES AND BENEFITS

- PVC hi vis waterproof rain jacket with welded/heat seal seams
- Heat seal genetic reflective tape with hoop tape configuration and single hoop at sleeves
- 2 x waist patch welded pockets

CODE	FABRIC	SIZE
WS0918515	100% PVC Polyester	S - 5XL

**WS Workwear**



## WATERPROOF PVC RAIN JACKET

### FEATURES AND BENEFITS

- PVC waterproof hi vis rain jacket with welded/heat seal seams
- Storm front with zipper and concealed plastic press stud closure
- Attached hood
- Adjustable press stud cuff

CODE	FABRIC	SIZES
OW0005515	100% PVC Polyester	S - 5XL

**WS Workwear**



## TAPED CHICAGO WATERPROOF RAIN PANT

### FEATURES AND BENEFITS

- Waterproof and breathable pant
- Reflective tape - double hoop tape configuration at lower legs
- Elasticated waistband with drawcord and adjuster
- Front side entry pockets
- Legs cuff with zipper and press stud for adjustment

CONSTRUCTION: 150D

CODE	FABRIC	SIZE
OW0968309	100% Polyester Oxford with PU coating	S-5XL





WATERPROOF PVC RAIN TROUSER

FEATURES AND BENEFITS

- PVC waterproof pant with welded/heat seal seams
- Elasticated waistband with drawcord and adjuster
- Front side entry pockets
- Ankle press studs for hem adjustment
- Weltd heat sealed seams

CODE	FABRIC	SIZES
OW0003315	100% PVC Polyester	S - 5XL



# MENS FLAME RESISTANT SHIRTS



BOOMERANG



## MENS LW FR LS 2TONE HOOP TAPED VENTED SHIRT - PPE 1

### FEATURES AND BENEFITS

- Inherent light weight FR fabric
- Double hoop tape configuration and single hoop at sleeves
- FR reflective tape - 50mm
- Horizontal venting (horizontal back venting)
- Underarm mesh vents
- Gusset sleeve and concealed plastic press stud closure

WEIGHT: 160GSM

CODE	FABRIC	SIZES
CW918640F	Lenzing FR / Aramid / Antistatic Ripstop	S - 6XL



BOOMERANG



## MENS LW FR HI VIS LS H & X BACK TAPED VENTED SHIRT - PPE 1

### FEATURES AND BENEFITS

- Inherent light weight FR fabric
- Full open front hi vis shirt with concealed plastic press stud
- H and X back tape configuration and single hoop at sleeves
- FR reflective tape - 50mm
- Horizontal venting (horizontal back venting)
- Underarm mesh vents

WEIGHT: 160GSM

CODE	FABRIC	SIZES
CW093840F	Lenzing FR / Aramid / Antistatic Ripstop	2XS - 6XL



BOOMERANG



## MENS FR HI VIS LS H & X BACK TAPED VENTED SHIRT - PPE 2

### FEATURES AND BENEFITS

- Full open front hi vis shirt with concealed plastic press stud
- H and X back tape configuration and single hoop at sleeves
- FR reflective tape - 50mm
- Horizontal venting (horizontal back venting)
- Underarm mesh vents
- Gusset sleeve and concealed plastic press stud closure

WEIGHT: 215GSM

CODE	FABRIC	SIZES
CW093842F	Lenzing FR / Aramid / Antistatic Twill	2XS - 6XL



BOOMERANG



## MENS FR LS 2TONE HOOP TAPED VENTED SHIRT WITH PATCH POCKETS - PPE 2

### FEATURES AND BENEFITS

- Inherent FR fabric
- Double hoop tape configuration and single hoop at sleeves
- FR reflective tape - 50mm
- Horizontal vack venting and underarm mesh vents
- Twin patch pocket with touch tape closure

WEIGHT: 215GSM

CODE	FABRIC	SIZES
CW918642F	Lenzing FR / Aramid / Antistatic Twill	S - 6XL

# MENS FLAME RESISTANT SHIRTS



CLASS D/N  
DAY OR NIGHT USE  
AS/NZ 4602.1

SUN  
PROTECTION

PPE  
1

BSI Certified Product  
AS/NZS 1906.4:2010  
AS/NZS 4602.1:2011  
ASTM F1959/F1959M  
NFPA 2112:2023

CLASS D/N  
DAY OR NIGHT USE  
AS/NZ 4602.1

SUN  
PROTECTION

PPE  
2

BSI Certified Product  
AS/NZS 1906.4:2010  
AS/NZS 4602.1:2011  
ASTM F1959/F1959M  
NFPA 2112:2023

ALSO AVAIL-  
ABLE

## MENS ULTRA LIGHTWEIGHT PPE 1 SHIRT WITH SEGMENTED FR REFLECTIVE TAPE

### FEATURES AND BENEFITS

- 155gsm lightweight garment providing PPE 1 (5.9 cal/cm<sup>2</sup>) protection
- Parvotex™ FR inherent fabric, with a blend of 32% cotton offers breathability and protection
- Strong reinforced ripstop fabric
- Lightweight FR segmented reflective tape tested to AS/NZS 1906.4:2010, ensures superior comfort
- Anti-static fabric dissipates electrostatic charge as per EN1149-3

WEIGHT: 155GSM

CODE	FABRIC	SIZES
BW2505T1	Parvotex™ FR / 32% Cotton / Antistatic Ripstop	S - 6XL

## MENS ULTRA LIGHTWEIGHT PPE 2 SHIRT WITH SEGMENTED FR REFLECTIVE TAPE

### FEATURES AND BENEFITS

- 197gsm regular weight garment providing PPE 2 (8.6 cal/cm<sup>2</sup>) protection. 7% lighter than regular lightweight due to segmented FR reflective tape
- Parvotex™ FR inherent fabric, with a blend of 32% cotton offers breathability and protection
- Strong reinforced ripstop fabric
- Lightweight FR segmented reflective tape tested to AS/NZS 1906.4:2010, ensures superior comfort
- Anti-static fabric dissipates electrostatic charge as per EN1149-3

WEIGHT: 197GSM

CODE	FABRIC	SIZES
BW1595T1	Parvotex™ FR / 32% Cotton / Antistatic Ripstop	S - 6XL



CLASS D/N  
DAY OR NIGHT USE  
AS/NZ 4602.1

SUN  
PROTECTION

PPE  
2

BSI Certified Product  
AS/NZS 1906.4:2010  
AS/NZS 4602.1:2011  
ASTM F1959/F1959M  
NFPA 2112:2023

CLASS D/N  
DAY OR NIGHT USE  
AS/NZ 4602.1

SUN  
PROTECTION

PPE  
1

BSI Certified Product  
AS/NZS 1906.4:2010  
AS/NZS 4602.1:2011  
ASTM F1959/F1959M  
NFPA 2112:2023

ALSO AVAIL-  
ABLE

## MENS ULTRA LIGHTWEIGHT PPE 2 SHIRT WITH SEGMENTED FR REFLECTIVE TAPE

### FEATURES AND BENEFITS

- 197gsm regular weight garment providing PPE 2 (8.6 cal/cm<sup>2</sup>) protection. 7% lighter than regular lightweight due to segmented FR reflective tape
- Parvotex™ FR inherent fabric, with a blend of 32% cotton offers breathability and protection
- Strong reinforced ripstop fabric
- Lightweight FR segmented reflective tape tested to AS/NZS 1906.4:2010, ensures superior comfort
- Anti-static fabric dissipates electrostatic charge as per EN1149-3

WEIGHT: 197GSM

CODE	FABRIC	SIZES
BW2595T1	Parvotex™ FR / 32% Cotton / Antistatic Ripstop	S - 6XL

## MENS LIGHTWEIGHT PPE 1 FR SHIRT WITH LOXY REFLECTIVE TAPE

### FEATURES AND BENEFITS

- 155gsm lightweight shirt providing PPE 1 (5.9 cal/cm<sup>2</sup>) protection
- Parvotex™ FR inherent fabric, with a blend of 32% cotton offers breathability and protection
- Strong reinforced ripstop fabric
- LOXY™ FR 9801 silver reflective tape tested to standard AS/NZS 1906.4:2010
- Anti-static fabric dissipates electrostatic charge as per EN1149-3

WEIGHT: 155GSM

CODE	FABRIC	SIZES
BW2500T1	Parvotex™ FR / 32% Cotton / Antistatic Ripstop	S - 6XL



# MENS FLAME RESISTANT SHIRTS

SAFETY WORKWEAR

MENS FLAME RESISTANT SHIRTS

2



## MENS REGULAR WEIGHT PPE 2 FR SHIRT WITH LOXY REFLECTIVE TAPE

### FEATURES AND BENEFITS

- 197gsm regular weight garment providing PPE 2 (8.6 cal/cm<sup>2</sup>) protection
- Parvotex™ FR inherent fabric, with a blend of 32% cotton offers breathability and protection
- Strong reinforced ripstop fabric
- LOXY™ FR 9801 silver reflective tape tested to standard AS/NZS 1906.4:2010
- Anti-static fabric dissipates electrostatic charge as per EN1149-3

WEIGHT: 197GSM

CODE	FABRIC	SIZES
BW1590T1	Parvotex™ FR / 32% Cotton / Antistatic Ripstop	S - 5XL



## MENS REGULAR WEIGHT PPE 2 TWO TONE FR SHIRT WITH LOXY REFLECTIVE TAPE

### FEATURES AND BENEFITS

- 197gsm regular weight garment providing PPE 2 (8.6 cal/cm<sup>2</sup>) protection
- Parvotex™ FR inherent fabric, with a blend of 32% cotton offers breathability and protection
- Strong reinforced ripstop fabric
- LOXY™ FR 9801 silver reflective tape tested to standard AS/NZS 1906.4:2010
- Anti-static fabric dissipates electrostatic charge as per EN1149-3

WEIGHT: 197GSM

CODE	FABRIC	SIZES
BW2590T1	Parvotex™ FR / 32% Cotton / Antistatic Ripstop	S - 5XL

# WOMENS FLAME RESISTANT SHIRTS



## WOMENS LW FR LS 2TONE HOOP TAPED VENTED SHIRT - PPE 2

### FEATURES AND BENEFITS

- 2Tone body and sleeve lower panels
- FR Reflective tape - 50mm
- Horizontal venting (horizontal back venting)
- Underarm mesh vents

WEIGHT: 185-215GSM

CODE	FABRIC	SIZES
CWL91864F	Lenzing FR / Aramid / Antistatic Twill	6 - 22



ALSO AVAILABLE



## WOMENS ULTRA LIGHTWEIGHT PPE 2 FR SHIRT WITH SEGMENTED FR REFLECTIVE TAPE

### FEATURES AND BENEFITS

- 197gsm regular weight garment providing PPE 2 (8.6 cal/cm<sup>2</sup>) protection
- Parvotex™ FR inherent fabric, with a blend of 32% cotton offers breathability and protection
- Strong reinforced ripstop fabric
- Lightweight FR segmented reflective tape tested to AS/NZS 1906.4:2010, ensures superior comfort
- Anti-static fabric dissipates electrostatic charge as per EN1149-3

WEIGHT: 197GSM

CODE	FABRIC	SIZES
BWW1595T1	Parvotex™ FR / 32% Cotton / Antistatic Ripstop	6 - 22
BWW2595T1	Parvotex™ FR / 32% Cotton / Antistatic Ripstop	6 - 22



ALSO AVAILABLE



## WOMENS LIGHTWEIGHT PPE 2 FR SHIRT WITH LOXY REFLECTIVE TAPE

### FEATURES AND BENEFITS

- 197gsm regular weight garment providing PPE 2 (8.6 cal/cm<sup>2</sup>) protection. 7% lighter than regular lightweight due to segmented FR reflective tape
- Parvotex™ FR inherent fabric, with a blend of 32% cotton offers breathability and protection
- Strong reinforced ripstop fabric
- LOXY™ FR 9801 silver reflective tape tested to standard AS/NZS 1906.4:2010
- Anti-static fabric dissipates electrostatic charge as per EN1149-3

WEIGHT: 197GSM

CODE	FABRIC	SIZES
BWW1590T1	Parvotex™ FR / 32% Cotton / Antistatic Ripstop	6 - 22
BWW2590T1	Parvotex™ FR / 32% Cotton / Antistatic Ripstop	8 - 22





# FLAME RESISTANT PANTS & COVERALLS



BOOMERANG



## MENS PPE 2 FR TAPED UTILITY PANTS

### FEATURES AND BENEFITS

- Single hoop Reflective Tape - 50mm at legs
- Side elastic panel at waistband
- YKK zipper
- Knee darts

WEIGHT: 255GSM

CODE	FABRIC	R SIZES	S SIZES
CW008330F	Lenzing FR / Aramid / Antistatic Twill	82R - 107R	87S - 132S



BOOMERANG



## MENS PPE 2 FR TAPED CARGO PANTS

### FEATURES AND BENEFITS

- Single hoop Reflective Tape - 50mm at legs
- Twin cargo patch angled pockets and flaps and touch tape closure
- Left hand side cargo pocket with additional tool entry at touch tape closure flap
- Knee darts

WEIGHT: 255GSM

CODE	FABRIC	R SIZES	S SIZES	L SIZES
CW008331F	Lenzing FR / Aramid / Antistatic Twill	82R - 107R	87S - 132S	79L - 89L



BOOMERANG



## MENS PPE 2 FR TREATED JEANS

### FEATURES AND BENEFITS

- Straight waistband with button closure
- Traditional straight leg cut
- YKK zipper
- Knee darts

WEIGHT: 340GSM

CODE	FABRIC	SIZES
CW008333F	100% Cotton Denim FR Treated	77R - 112R



## MENS REGULAR WEIGHT PPE 2 FR PANTS WITH LOXY REFLECTIVE TAPE

### FEATURES AND BENEFITS

- 197gsm regular weight garment providing PPE 2 (8.6 cal/cm²) protection
- Parvotex™ FR inherent fabric, with a blend of 32% cotton offers breathability and protection
- Strong reinforced ripstop fabric
- LOXY™ FR 9801 silver reflective tape tested to standard AS/NZS 1906.4:2010
- Anti-static fabric dissipates electrostatic charge as per EN1149-3

WEIGHT: 197GSM

CODE	FABRIC	R SIZES	S SIZES	L SIZES
BW1550T	Parvotex™ FR / 32% Cotton / Antistatic Ripstop	82R - 117R	82S - 132S	84L - 94L



# FLAME RESISTANT PANTS & COVERALLS



## MENS REGULAR WEIGHT PPE 2 FR CARGO PANTS WITH LOXY REFLECTIVE TAPE

### FEATURES AND BENEFITS

- 197gsm regular weight garment providing PPE 2 (8.6 cal/cm<sup>2</sup>) protection
- Parvotex™ FR inherent fabric, with a blend of 32% cotton offers breathability and protection
- Strong reinforced ripstop fabric
- LOXY™ FR 9801 silver reflective tape tested to standard AS/NZS 1906.4:2010
- Anti-static fabric dissipates electrostatic charge as per EN1149-3

WEIGHT: 197GSM

CODE	FABRIC	R SIZES	S SIZES	L SIZES
BW1560T	Parvotex™ FR / 32% Cotton / Antistatic Ripstop	72R - 117R	82S - 132S	84L - 94L



## WOMENS REGULAR WEIGHT PPE 2 FR CARGO PANTS WITH LOXY REFLECTIVE TAPE

### FEATURES AND BENEFITS

- 197gsm regular weight garment providing PPE 2 (8.6 cal/cm<sup>2</sup>) protection
- Parvotex™ FR inherent fabric, with a blend of 32% cotton offers breathability and protection
- Strong reinforced ripstop fabric
- LOXY™ FR 9801 silver reflective tape tested to standard AS/NZS 1906.4:2010
- Anti-static fabric dissipates electrostatic charge as per EN1149-3

WEIGHT: 197GSM

CODE	FABRIC	SIZES
BWW1560T	Parvotex™ FR / 32% Cotton / Antistatic Ripstop	6 - 22







HIGH VOLTAGE  
KEEP OFF





# FLAME RESISTANT PANTS & COVERALLS



## MENS LIGHTWEIGHT PPE 2 FR TAPED VENTED COVERALLS

### FEATURES AND BENEFITS

- Double hoop tape configuration at body and sleeves
- FR reflective tape - 50mm
- Horizontal venting (horizontal back venting)
- Underarm mesh vents

WEIGHT: 215GSM

CODE	FABRIC	SIZES
CW091811F	Lenzing FR / Aramid / Antistatic Twill	82R - 112R



ALSO AVAILABLE



## MENS REGULAR WEIGHT PPE 2 FR COVERALL WITH LOXY REFLECTIVE TAPE

### FEATURES AND BENEFITS

- 197gsm regular weight garment providing PPE 2 (8.6 cal/cm<sup>2</sup>) protection
- Parvotex™ FR inherent fabric, with a blend of 32% cotton offers breathability and protection
- Strong reinforced ripstop fabric
- LOXY™ FR 9801 silver reflective tape tested to standard AS/NZS 1906.4:2010
- Anti-static fabric dissipates electrostatic charge as per EN1149-3

WEIGHT: 197GSM

CODE	FABRIC	R SIZES	S SIZES
BW1570T1	Parvotex™ FR / 32% Cotton / Antistatic Ripstop	77R - 117R	92S - 132S
BW2570T1	Parvotex™ FR / 32% Cotton / Antistatic Ripstop	77R - 117R	87S - 132S



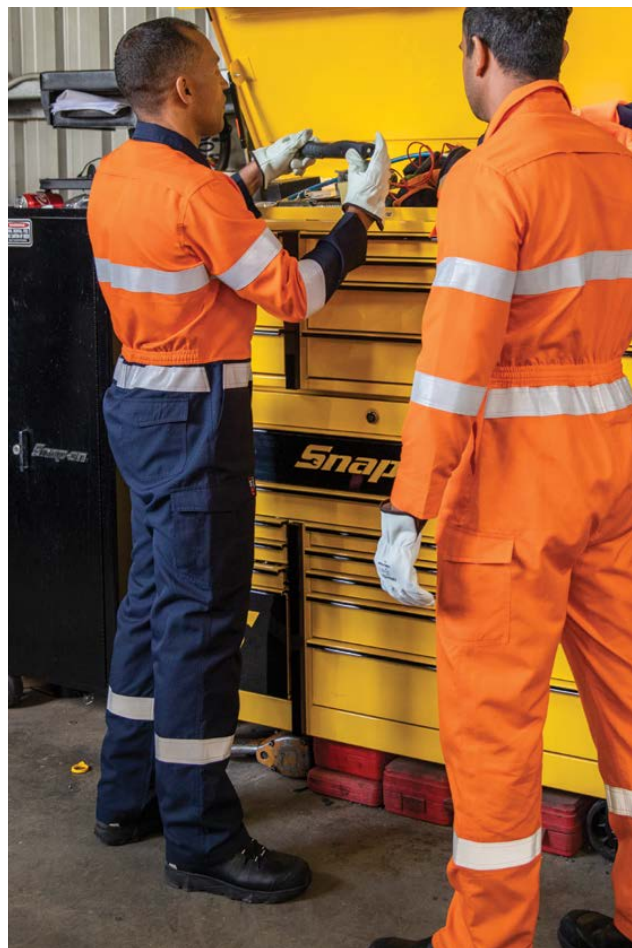
## MENS LIGHTWEIGHT PPE 2 FR TAPED VENTED COVERALLS

### FEATURES AND BENEFITS

- 2Tone body and sleeve lower panels
- Double hoop tape configuration at body and sleeves
- FR Reflective tape - 50mm
- Horizontal venting (horizontal back venting)
- Underarm mesh vents

WEIGHT: 185GSM - 215GSM

CODE	FABRIC	SIZES
CW918610F	Lenzing FR / Aramid / Antistatic Twill	82R - 112R





# FLAME RESISTANT JACKETS & JUMPERS



BSI Certified Product  
AS/NZS 1906.4:2010  
AS/NZS 4602.1:2011  
ASTM F1959/F1959M



ALSO  
AVAILABLE



BSI Certified Product  
AS/NZS 1906.4:2010  
AS/NZS 4602.1:2011  
ASTM F1959/F1959M

## PPE 2 SOFTSHELL JACKET WITH SEGMENTED FR REFLECTIVE TAP

### FEATURES AND BENEFITS

- 360gsm 3-layer softshell combining poly shell fabric and breathable FR PU
- Inherent FR fleece seams
- Segmented FR heat applied reflective tape
- Anti-static fabric dissipates electrostatic charge as per EN1149-3

WEIGHT: 360GSM

CODE	FABRIC	SIZES
BW2300T8	FR Softshell	S - 5XL

## FR PPE 3 HI VIS PARKA WITH ZIP-OFF SLEEVES AND SEGMENTED FR TAPE

### FEATURES AND BENEFITS

- 110D 3-layer parka with fire resistant lining - Polyester, Polyurethane, Modacrylic, Cotton Blend
- Waterproof garment and breathable fabric with sealed seams for extra insulation from water
- FR fleece and flame retardant thread used in seams
- Segmented FR heat applied reflective tape
- Anti-static fabric dissipates electrostatic charge as per EN1149-3

WEIGHT: 110D

CODE	FABRIC	SIZES
BW1340T4	FR 3 Layer	S - 5XL
BW2340T4	FR 3 Layer	S - 5XL



BSI Certified Product  
AS/NZS 1906.4:2010  
AS/NZS 4602.1:2011  
ASTM F1959/F1959M



BSI Certified Product  
AS/NZS 1906.4:2010  
AS/NZS 4602.1:2011  
ASTM F1959/F1959M

## FR SOFTSHELL JACKET WITH SEGMENTED FR TAPE

### FEATURES AND BENEFITS

- 360gsm 3-layer softshell combining poly shell fabric and breathable FR PU
- Inherent FR fleece and flame retardant thread used in seams
- Segmented FR heat applied reflective tape
- Anti-static fabric dissipates electrostatic charge as per EN1149-3

WEIGHT: 360GSM

CODE	FABRIC	SIZES
BW1300T5	FR Softshell	XS - 6XL

## PPE 2 WATER REPELLENT FLEECE JUMPER WITH SEGMENTED FR REFLECTIVE TAPE

### FEATURES AND BENEFITS

- 280gsm FR fleece yarn with 39% Cotton for superior breathability
- Concealed 1/4 zip front for a sleek appearance and added safety
- Inherent FR fleece and flame retardant thread used in seams
- Segmented FR heat applied reflective tape
- Anti-static fabric dissipates electrostatic charge as per EN1149-3

WEIGHT: 280GSM

CODE	FABRIC	SIZES
BW2350T1	FR Fleece, 39% Cotton	S - 5XL

# FLAME RESISTANT JACKETS & JUMPERS



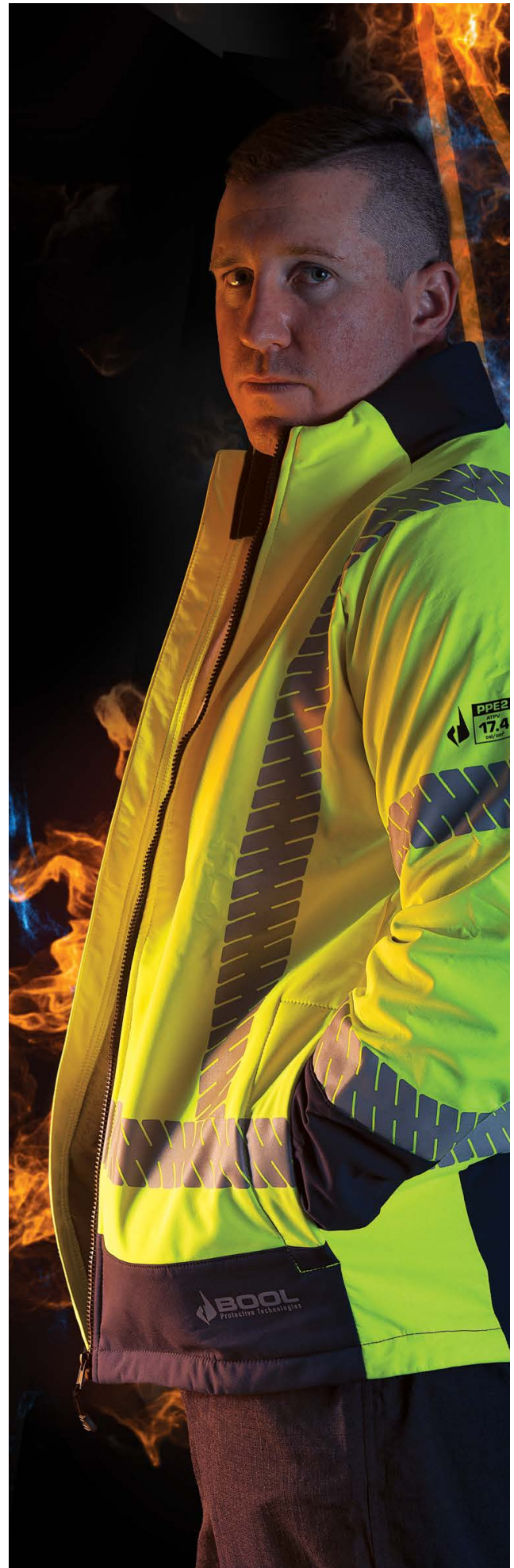
## PPE 2 FR WATER REPELLENT FLEECE JUMPER WITH SEGMENTED FR REFLECTIVE TAPE

### FEATURES AND BENEFITS

- 280gsm FR fleece yarn with 39% Cotton for superior breathability
- Concealed 1/4 zip front for a sleek appearance and added safety
- Inherent FR fleece and flame retardant thread used in seams
- Segmented FR heat applied reflective tape
- Anti-static fabric dissipates electrostatic charge as per EN1149-3

WEIGHT: 280GSM

CODE	FABRIC	SIZES
BW1350T1	FR Fleece, 39% Cotton	S - 5XL



SAFETY WORKWEAR

FLAME RESISTANT JACKETS & JUMPERS

2

# FASHION BIZ CORPORATE SHIRTS

BIZ COLLECTION



## MENS FOCUS SHORT SLEEVE POLO

### FEATURES AND BENEFITS

- 80% Polyester, 20% Cotton-backed pique
- Biz Cool™
- Breathable cotton-backed pique
- UPF 50+
- Loose pocket included
- 7XL only available for Black/Black, Navy/Navy

WEIGHT: 185GSM

CODE	FABRIC	SIZES
P313MS	80% Polyester, 20% Cotton-backed Pique	XS - 5XL

BIZ COLLECTION



## WOMENS FOCUS SHORT SLEEVE POLO

### FEATURES AND BENEFITS

- 80% Polyester, 20% Cotton-backed pique
- Biz Cool™
- Breathable cotton-backed pique
- UPF 50+

WEIGHT: 185GSM

CODE	FABRIC	SIZES
P313LS	80% Polyester, 20% Cotton-backed Pique	6 - 24

BIZ COLLECTION



## MENS ECHO SHORT SLEEVE POLO

### FEATURES AND BENEFITS

- 100% Recycled Polyester
- Lightweight houndstooth knit
- Biz Cool™
- UPF 15+

WEIGHT: 160GSM

CODE	FABRIC	SIZES
P412MS	100% Recycled Polyester	S - 5XL

BIZ COLLECTION



## WOMENS ECHO SHORT SLEEVE POLO

### FEATURES AND BENEFITS

- 100% Recycled Polyester
- Lightweight houndstooth knit
- Biz Cool™
- UPF 15+

WEIGHT: 160GSM

CODE	FABRIC	SIZES
P412LS	100% Recycled Polyester	6 - 24



BIZ COLLECTION



MENS ACTION SHORT SLEEVE POLO

FEATURES AND BENEFITS

- 100% Recycled Polyester
- Biz Cool™
- Breathable sports knit
- UPF 50+
- Loose pocket included

WEIGHT: 155GSM

CODE	FABRIC	SIZES
P206MS	100% Recycled Polyester	XS -3XL, 5XL, 7XL

BIZ COLLECTION



WOMENS ACTION SHORT SLEEVE POLO

FEATURES AND BENEFITS

- 100% Recycled Polyester
- Biz Cool™
- Breathable sports knit
- UPF 50+

WEIGHT: 155GSM

CODE	FABRIC	SIZES
P206LS	100% Recycled Polyester	6 - 24

BIZ COLLECTION



MENS ACTION LONG SLEEVE POLO

FEATURES AND BENEFITS

- 100% Recycled Polyester
- Biz Cool™
- Breathable sports knit
- UPF 50+
- Loose pocket included

WEIGHT: 155GSM

CODE	FABRIC	SIZES
P206ML	100% Recycled Polyester	XS - 3XL, 5XL, 7XL

BIZ COLLECTION



WOMENS ACTION LONG SLEEVE POLO

FEATURES AND BENEFITS

- 100% Recycled Polyester
- Biz Cool™
- Breathable sports knit
- UPF 50+

WEIGHT: 155GSM

CODE	FABRIC	SIZES
P206LL	100% Recycled Polyester	6 - 24

# FASHION BIZ CORPORATE SHIRTS

BIZ COLLECTION



## MENS CITY SHORT SLEEVE POLO

### FEATURES AND BENEFITS

- 95% Cotton, 5% Elastane pique knit, UPF Rating - Colours 50+, White 30+
- Elevated classic design with a unique waffle knit collar and cuff
- Longer length with side splits
- Loose pocket included

WEIGHT: 190GSM

CODE	FABRIC	SIZES
P105MS	95% Cotton, 5% Elastane	S - 5XL

BIZ COLLECTION



## WOMENS CITY SHORT SLEEVE POLO

### FEATURES AND BENEFITS

- 95% Cotton, 5% Elastane pique knit, UPF Rating - Colours 50+, White 30+
- Elevated classic design with a unique waffle knit collar and cuff
- Longer length with side splits

WEIGHT: 190GSM

CODE	FABRIC	SIZES
P105LS	95% Cotton, 5% Elastane	6 - 24

BIZ COLLECTION



## MENS CAMDEN LONG SLEEVE SHIRT

### FEATURES AND BENEFITS

- 97% Cotton, 3% Elastane; Stretch Oxford weave
- Modern button-down collar and adjustable cuff
- No chest pocket, a loose pocket piece is included

CODE	FABRIC	SIZES
S016ML	97% Cotton, 3% Elastane	XS - 5XL

BIZ COLLECTION



## WOMENS CAMDEN LONG SLEEVE SHIRT

### FEATURES AND BENEFITS

- 97% Cotton, 3% Elastane
- Stretch oxford weave

CODE	FABRIC	SIZES
S016LL	97% Cotton, 3% Elastane	6 - 26

BIZ COLLECTION



## MENS MEMPHIS LONG SLEEVE SHIRT

### FEATURES AND BENEFITS

- 60% Cotton, 40% Polyester, pre-shrunk plain Oxford weave
- Modern button-down collar
- Back box pleat
- Adjustable cuff
- Includes loose pocket

CODE	FABRIC	SIZES
S127ML	60% Cotton, 40% Polyester	XS - 5XL

BIZ COLLECTION



## WOMENS MEMPHIS LONG SLEEVE SHIRT

### FEATURES AND BENEFITS

- 60% Cotton, 40% Polyester, pre-shrunk plain Oxford weave
- Semi-fitted silhouette with shirt tail hem and back box pleat
- Can be worn tucked in or out

CODE	FABRIC	SIZES
S127LL	60% Cotton, 40% Polyester	6 - 26

BIZCORPORATES



## WOMENS ARIA FLUTED SLEEVE BLOUSE

### FEATURES AND BENEFITS

- 100% Polyester
- Semi-fitted style
- No back neck opening - easy slip on style
- Soft fluted sleeves with seam designed to sit above elbow
- Straight front and back hem

CODE	FABRIC	SIZES
RB966LS	100% Polyester	4 - 26

BIZCORPORATES



## MENS NOAH LONG SLEEVE SHIRT

### FEATURES AND BENEFITS

- 100% Cotton yarn dyed check
- Easy care finish
- Breathable and lightweight making it perfect for warmer climates
- Classic fit - straight through the chest and body
- Curved hemline
- Loose pocket included

CODE	FABRIC	SIZES
RS070ML	100% Cotton	XS - 5XL



# FASHION BIZ CORPORATE PANTS

BIZ COLLECTION



## WOMENS EVE PERFECT PANTS

### FEATURES AND BENEFITS

- 4-Way stretch 62% Polyester, 34% Viscose, 4% Elastane
- Stretch fabric for maximum comfort and minimal creasing
- Midrise with a flattering wider waistband
- Low profile front and back pockets
- Classic straight leg shape

CODE	FABRIC	SIZES
BS508L	62% Polyester, 34% Viscose, 4% Elastane	10 - 26

BIZ COLLECTION



## WOMENS STELLA PERFECT PANTS

### FEATURES AND BENEFITS

- 4-Way stretch 62% Polyester, 34% Viscose, 4% Elastane
- Stretch fabric for maximum comfort and minimal creasing
- Midrise with a flattering wider waistband
- Low profile front and back pockets
- Classic straight leg shape

CODE	FABRIC	SIZES
BS506L	62% Polyester, 34% Viscose, 4% Elastane	8 - 20

BIZ COLLECTION



## WOMENS KATE PERFECT PANTS

### FEATURES AND BENEFITS

- 4-Way stretch 62% Polyester, 34% Viscose, 4% Elastane
- Stretch fabric for maximum comfort and minimal creasing
- Fits to cover all shapes

CODE	FABRIC	SIZES
BS507L	62% Polyester, 34% Viscose, 4% Elastane	4 - 16

BIZ COLLECTION



## MENS CLASSIC FLAT PANTS

### FEATURES AND BENEFITS

- 65% Polyester, 35% Viscose
- Easy care
- Mechanical stretch

CODE	FABRIC	SIZES
BS29210	65% Polyester, 35% Viscose	72R - 127R

BIZ COLLECTION



CLASSIC WOMENS  
FLAT FRONT PANTS

FEATURES AND BENEFITS

- 65% Polyester, 35% Viscose
- Easy care
- Mechanical stretch

CODE	FABRIC	SIZES
BS29320	65% Polyester, 35% Viscose	6 - 26

BIZ COLLECTION



MENS CLASSIC  
PLEAT PANTS

FEATURES AND BENEFITS

- 65% Polyester, 35% Viscose
- Easy care
- Mechanical stretch

CODE	FABRIC	SIZES
BS29110	65% Polyester, 35% Viscose	72R - 127R



# FASHION BIZ CORPORATE JACKETS & VESTS

BIZ COLLECTION



## MENS SOFTSHELL JACKET

### FEATURES AND BENEFITS

- 3-Layer BIZ TECH™ softshell
- Outer: 100% Bonded Polyester, Lining: Polyester knit bonded with micro-fleece

CODE	FABRIC	SIZES
J3880	100% Bonded Polyester	S - 3XL, 5XL

BIZ COLLECTION



## WOMENS SOFTSHELL JACKET

### FEATURES AND BENEFITS

- 3-Layer BIZ TECH™ softshell
- Outer: 100% Bonded Polyester, Lining: Polyester knit bonded with micro-fleece

CODE	FABRIC	SIZES
J3825	100% Bonded Polyester	S - 2XL

BIZ COLLECTION



## MENS SOFTSHELL VEST

### FEATURES AND BENEFITS

- 3-Layer BIZ TECH™ softshell
- Outer: 100% Bonded Polyester, Lining: Polyester knit bonded with micro-fleece

CODE	FABRIC	SIZES
J3881	100% Bonded Polyester	S - 3XL, 5XL

BIZ COLLECTION



## WOMENS SOFTSHELL VEST

### FEATURES AND BENEFITS

- 3-Layer BIZ TECH™ softshell
- Outer: 100% Bonded Polyester, Lining: Polyester knit bonded with micro-fleece

CODE	FABRIC	SIZES
J29123	100% Bonded Polyester	S - 2XL







ALSO AVAILABLE IN LONG SLEEVE 7PIPL

## PODIUM SHORT SLEEVE PIPING POLO

### FEATURES AND BENEFITS

- 100% Polyester, 160gsm pique knit fabric
- Classic fit, straight hem with side splits
- Podium Cool, moisture wicking fabric designed to help keep you cool and dry
- Complies with standard AS 4399:2020 for UPF protection
- Easy care fabric, quick drying

WEIGHT: 160GSM

CODE	FABRIC	SIZES
NN0007PIP	100% Polyester	S - 5XL



## COLOURS OF COTTON LONG SLEEVE PIQUE POLO

### FEATURES AND BENEFITS

- 100% Cotton for comfort, 210gsm pique knit fabric
- Classic fit, knitted collar with tri-colour tape on inside neck seam and side split
- Complies with standard AS 4399:2020 for UPF protection
- Elastic rib sleeve cuff

WEIGHT: 210GSM

CODE	FABRIC	SIZES
JB000S2ML	100% Cotton	XS - XL



## COLOURS OF COTTON LADIES SHORT SLEEVE PIQUE POLO

### FEATURES AND BENEFITS

- 100% Cotton for comfort, 210gsm pique knit fabric
- Classic fit, knitted collar with herringbone tape inside back neck and side split
- Complies with standard AS 4399:2020 for UPF protection

WEIGHT: 210GSM

CODE	FABRIC	SIZES
JB000S2MP	100% Cotton	S - 5XL



## JB'S TEE

### FEATURES AND BENEFITS

- Heavy 190gsm ring spun jersey knit fabric
- Classic fit, JB's shape staying elastane rib crew neck
- Twin needle double stitched seams
- Complies with standard AS 4399:2020 for UPF protection
- Black available to size 12/13XL

WEIGHT: 190GSM

CODE	FABRIC	SIZES
NN00001HT	100% Cotton	S - 4XL





OTHER COLOURS  
AVAILABLE



OTHER COLOURS  
AVAILABLE



JB'S FLEECE HOODIE

FEATURES AND BENEFITS

- Classic fit, 80% Cotton, 20% Polyester (solid colours)
- Cotton rich 310gsm fleece
- Fully lined hood, front kangaroo pocket
- All-around warmth and comfort
- Black available to size 12/13XL

WEIGHT: 310GSM

CODE	FABRIC	SIZES
NN3FH0000	80% Cotton, 20% Polyester	S - 6XL

JB'S CHUNKY 1/2 ZIP JUMPER

FEATURES AND BENEFITS

- 40% Wool, 40% Acrylic, 20% Polyester
- Chunky style with 1/2 zip
- 12 gauge waffle knit
- Antique brass 1/2 zip opening
- Rib cuff and basque

CODE	FABRIC	SIZES
6JCZ	40% Wool, 40% Acrylic, 20% Polyester	S - 5XL



## ACCESSORIES



3  
PACK

### BAMBOO PERFORMANCE SOCK

#### FEATURES AND BENEFITS

- RadiatorTECH™ to improve breathability in high sweat zones
- ArticulatedFIT™ to allow natural movement of the foot
- Bamboo is naturally anti-bacterial to help combat odour
- Padded zone to disperse boot shaft pressure
- Compression zones reduce sock movement
- Reinforced and padded toe and heel

CODE	FABRIC	SIZES
MKPERSOCK	78% Bamboo, 20% Nylon, 2% Elastane	6-10, 11-14

### 3 PACK COTTON / ELASTANE CREW SOCK

#### FEATURES AND BENEFITS

- Value pack - 3 pairs per pack!
- Exceptionally comfortable and breathable for all day wear
- Cushioned wicking sole
- Reinforced toes and cuff

CODE	FABRIC	SIZES
MKCOTSOCK	98% Cotton, 2% Elastane	6-10, 11-14



BOOMERANG



WS Workwear



MADE FROM  
BAMBOO



### MENS BAMBOO SOCKS

#### FEATURES AND BENEFITS

- RadiatorTECH™ to improve breathability in high sweat zones
- ArticulatedFIT™ to allow natural movement of the foot
- Bamboo is naturally anti-bacterial to help combat odour
- Padded zone to disperse boot shaft pressure
- Compression zones reduce sock movement
- Reinforced and padded toe and heel

CODE	FABRIC	SIZES
CWBAMSOCK	78% Bamboo, 20% Nylon, 2% Elastane	6-10, 11-14

### BAMBOO SOCKS

#### FEATURES AND BENEFITS

- Natural breathable fibre
- Blend of nylon and elastane for hard-wearing and flexibility
- Naturally anti-bacterial to help combat odour
- Soft and comfortable for all-day wear

CODE	FABRIC	SIZES
WS00A0115	78% Bamboo, 20% Nylon, 2% Elastane	6-10, 11-14





### 35MM LEATHER BELT WITH SILVER BUCKLE

#### FEATURES AND BENEFITS

- 5mm wide leather "workwear" belt with an antique nickle buckle and keeper set

CODE	FABRIC	SIZES
WS00ABK11	Leather	30 - 48



### KNEE PAD FOR 'TRADIESMATE' TROUSER

#### FEATURES AND BENEFITS

- Cushioned knee pad for comfort
- Contoured design for comfortable fit

CODE	FABRIC	SIZES
KNEEPADS-BB	Neoprene	OSFA



### COTTON OVERBOOTS COVER

#### FEATURES AND BENEFITS

- Elasticised for comfort
- Keeps dirt, grass and other materials out of your boots
- Sold in pairs

CODE	FABRIC	SIZES
WSAOB0001	100% Cotton Drill	OSFA



# WORKWEAR SIZE GUIDE

## MEN'S SHORTS, TROUSERS, COVERALL & OVERALLS

REGULAR SIZES	72R	77R	82R	87R	92R	97R	102R	107R	112R	117R	
IMPERIAL SIZE	2	3	4	5	6	7	8	9	10	11	
TO FIT CHEST (cm)	82	87	92	97	102	107	112	117	122	127	
TO FIT WAIST (cm)	72	77	82	87	92	97	102	107	112	117	
TO FIT WAIST (inches)	28	30	32	34	36	38	40	42	44	46	
TO FIT INLEG (cm)	75	77	77	79	81	83	84	87	87	87	
STOUT SIZES	82S	87S	92S	97S	102S	107S	112S	117S	122S	127S	132S
IMPERIAL SIZE	2 1/4	3 1/4	4 1/4	5 1/4	6 1/4	7 1/4	8 1/4	9 1/4	10 1/4	11 1/4	12 1/4
TO FIT CHEST (cm)	92	97	102	107	112	117	122	127	132	137	142
TO FIT WAIST (cm)	82	87	92	97	102	107	112	117	122	127	132
TO FIT WAIST (inches)	32	34	36	38	40	42	44	46	48	50	52
TO FIT INLEG (cm)	70	70	73	73	73	75	75	75	75	75	75
LONG SIZES		79L	84L	89L	94L						
IMPERIAL SIZE		4 1/2	5 1/2	6 1/2	7 1/2						
TO FIT CHEST (cm)		92	97	102	107						
TO FIT WAIST (cm)		79	84	89	94						
TO FIT WAIST (inches)		31	33	35	37						
TO FIT INLEG (cm)		84	84	86	88						
MEN'S ELASTIC WAIST PANTS (cm)	67/2XS	72/XS	77/S	82/M	87/L	92/XL	97/2XL	102/3XL	107/4XL	112/5XL	

## SHIRTS, POLOS, T-SHIRTS, JUMPERS & JACKETS

SIZES	2XS	XS	S	M	L	XL	2XL	3XL	4XL	5XL	6XL
WOMEN'S CONVERSION	6	8	10	12	14	16	18	20	22	24	
TO FIT NECK (cm)	33/34	35/36	37/38	39/40	41/42	43/44	45/46	48/49	50/51	52/53	55/56
TO FIT CHEST (cm)	73-79	80-86	87-93	94-100	101-107	108-114	115-120	120-125	125-130	130-135	135-140

## WOMEN'S SHIRT & TROUSERS

SIZE	6	8	10	12	14	16	18	20	22	24	
TO FIT BUST (cm)	82	87	92	97	102	107	112	117	122	127	
TO FIT NATURAL WAIST (cm)	60	65	70	75	80	85	90	95	100	105	
TO FIT LOWER WAIST (cm)	67	72	77	82	87	92	97	102	107	112	
TO FIT HIPS (cm)	87	93	98	103	108	113	118	123	128	133	
TO FIT INLEG (cm)	74	76	78	80	80	82	82	84	84	84	
CONVERSION T MEN'S PANTS (cm)	67/2XS	72/XS	77/S	82/M	87/L	92/XL	97/2XL	102/3XL	107/4XL	112/5XL	
CONVERSION TO MEN'S SHIRTS	2XS	XS	S	M	L	XL	2XL	3XL	4XL	5XL	

SOCK SIZE	TO FIT FOOT LENGTH (cm)	TO FIT SHOE	
		AUS/UK	USA
6 - 10	22 - 27	6 - 10	7 - 11
11 - 14	27 - 32	11 - 14	12 - 15



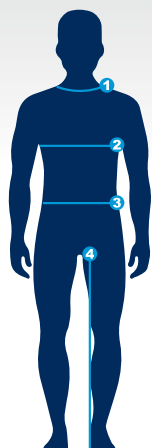
## HEADWEAR - CAPS/BEANIE

### ONE SIZE FITS ALL

To fit head circumference

55 - 62cm

21 3/4 - 24 1/4 inch



### 1 NECK:

Measure around your neck where the collar sits, allowing two fingers behind tape measure for comfort.

### 2 CHEST/BUST:

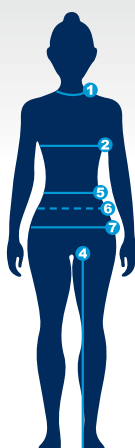
Measure straight and around the fullest part of your chest or bust. Ensuring tape is kept level and straight across the back.

### 3 WAIST:

Measure around natural waist line. This is where your pants sit and measure over under garments and not over pant waistband. Keep tape level yet not too tight against skin.

### 4 INLEG:

Measure inside leg from the crotch seam to the heel of the shoe.



## FOR A COMFORTABLE FIT

It is important to measure correctly.

### WHEN MEASURING

Make sure the tape measure is level and not tight.

### 5 NATURAL WAIST:

At belly button.

### 6 LOWER WAIST:

4-5cm below belly button.

### 7 HIP:

Measure loosely around the fullest part of the hips keeping the tape level at the back and measure over undergarments.

## SPECIAL NOTES

### FOR COVERALLS

Choose one size up from the pants size you wear. Coveralls & Overalls are meant to be worn over other clothing.

### FOR TROUSERS

Use only waist and inside leg measurements to make your selection.

### FOR SHIRT CHEST

Please note this is "TO FIT" chest measurement - shirts chest measurements are bigger for comfort and movement.

### FOR JACKETS

Use chest measurement only. Jackets are normally worn over clothing and have been designed to be slightly bigger than a shirt.

THIS GUIDE FOLLOWS THE AUSTRALIAN BODY SIZING MEASUREMENTS RECOMMENDATION. THESE ARE NOT GARMENT MEASUREMENTS (WITH THE EXCEPTION TO FIT WAIST FOR SHORT/PANTS)





FOR SAFE  
**WORKING  
LIVES**



**safety & lifting**

**Bunzl Safety & Lifting**

55 Sarah Andrews Close

Erskine Park NSW 2759

**1800 967 573**

[bunzlsafety.com.au](http://bunzlsafety.com.au)