

3M Science.
Applied to Life.™

BUNZL
safety & lifting

Care and Maintenance Guide





3M™ Versaflo™ Faceshields M-200 Series

To maintain protection levels, optimise the effective product life, it is extremely important to carry out regular checks and maintenance.

► Before Each Use

- Inspect for damage and replace if necessary:
 - Face seal – ensure it is inserted properly and free from splits and tears
 - Visor - surround and gasket
 - Forehead seal
 - Head harness
 - Comfort pad/s
 - Replace Peel Off visor covers (if used).

► Record Retention

- Carry out all the 'Before Each Use' inspections and create record of this monthly check.

► After Use

- Clean with cloth dampened with a mild solution of water and liquid household soap.
- Wipe down with 3M™ Face Seal Wipe 504.
- Store in a dry, clean area / locker away from direct sunlight, high temperatures and solvents.

► Ordering Consumables, Repair Parts and Accessories

To request a quote or place an order for these items, please contact your 3M Approved Distributor.

► Further Information and Advice

If you require additional guidance on the Care and Maintenance of your 3M Powered and Supplied Air Equipment, please contact 3M Customer Service or your local 3M representative.



Description		Part No.
	3M™ Versaflo™ M-206 Respiratory Faceshield, with coated visor and comfort face seal	M-206
	3M™ Versaflo™ M-207 Respiratory Faceshield, with coated visor and flame resistant face seal	M-207
Accessories and spare parts		
01	Airflow Deflector	M-116
02	Forehead Seal	M-154
03	Head Suspension	M-150
04	Size Reducing Ratchet Comfort Pad	M-953
05	Forehead Comfort Pad	M-957
06	Standard Face seal	M-935
06	Comfort Face seal (comes with M-206)	M-936
06	Flame Resistant Face seal (comes with M-207)	M-937
07	Visor Frame Buttons	M-919
08	Visor Frame Assembly	M-920
09	Visor Gasket	M-921
10	Coated visor – providing chemical and scratch resistance	M-927
11	Peel-Off Visor Covers	M-928
12	Chin Strap	M-959
13	Visor Pivot Kit	M-960
14	Flame Resistant Headtop Cover	M-972
15	Head, Neck and Shoulder Cover	M-976
16	3M™ Versaflo™ Cap Lamp Bracket	M-940
17	Size Reducing Ratchet Comfort Pad	M-956
18	Tinted Peel Off Visor Covers	M-924-25

Note: Products may not be set up or stocked in ANZ. Please contact 3M for availability.



QR-MS-CMP

Click or Scan for Detailed
Care & Maintenance
Guidance



QR-MS-VID

Click or Scan for
M-Series Video



QR-M2-TDS

Click or Scan for M-200
Tech Data Sheet

**Replace all damaged parts immediately
to ensure correct levels of protection.**

Note: 3M does not accept responsibility or liability, direct or consequential, arising from reliance upon any information provided and the user should determine the suitability of the products for their intended use. Nothing in this statement will be deemed to exclude or restrict 3M's liability for death or personal injury arising from its negligence or fraudulent misrepresentation.

3M™ Versaflo™ M-300 Series Helmets

To maintain protection levels, optimise the effective product life, it is extremely important to carry out regular checks and maintenance.

► Before Each Use

- Inspect for damage and replace if necessary:
 - Face seal – ensure it is inserted properly and free from splits and tears
 - Visor - surround and gasket
 - Forehead seal
 - Head harness
 - Comfort pad/s
 - Replace Peel Off visor covers (if used).

► Record Retention

- Carry out all the 'Before Each Use' inspections and create record of this monthly check for the hood.

► After Use

- Clean with cloth dampened with a mild solution of water and liquid household soap.
- Wipe down with 3M 504 Wipes.
- Store in a dry, clean area / locker away from direct sunlight, high temperatures and solvents.

► Ordering Consumables, Repair Parts and Accessories

To request a quote or place an order for these items, please contact your 3M Approved Distributor.

► Further Information and Advice

If you require additional guidance on the Care and Maintenance of your 3M Powered and Supplied Air Equipment, please contact 3M Customer Service or your local 3M representative.



M-306/M-307



M-307CAP

Description		Part No.
3M™ Versaflo™ M-306 Respiratory Helmet, with Coated Visor and Comfort Face Seal		M-306
3M™ Versaflo™ M-307 Respiratory Helmet, with Coated Visor and Flame Resistant Face Seal		M-307
3M™ Versaflo™ High Impact Helmet M-307 with M-940 Cap Lamp Bracket and reflective tape		M-307CAP
Accessories and spare parts		
01	Airflow Deflector	M-316
02	Forehead Seal	M-350
03	Head Suspension	M-354
04	Size Reducing Ratchet Comfort Pad	M-956
05	Forehead Comfort Pad	M-957
06	Standard Face Seal	M-935
06	Comfort Face Seal (comes with M-306)	M-936
06	Flame Resistant Face Seal (comes with M-307)	M-937
07	Visor Frame Buttons	M-919
08	Visor Frame Assembly	M-920
09	Visor Gasket	M-921
10	Coated visor – providing chemical and scratch resistance	M-927
11	Peel-Off Visor Covers	M-928
12	Chin Strap	M-959
13	Visor Pivot Kit	M-960
14	Flame Resistant Headtop Cover	M-972
15	Head, Neck and Shoulder Cover	M-976
16	3M™ Versaflo™ Cap Lamp Bracket	M-940
17	Headband Back Part Ratchet	M-953
18	Tinted Peel Off Visor Covers	M-924-25

Note: Products may not be set up or stocked in ANZ. Please contact 3M for availability.



QR-MS-CMP

Click or Scan for Detailed
Care & Maintenance
Guidance



QR-MS-VID

Click or Scan for
M-Series Video



QR-M3-TDS

Click or Scan for M-300
Tech Data Sheet

3M Australia Pty Ltd
Bldg A, 1 Rivett Road
North Ryde NSW 2113
Customer Service: 1300 363 565
Email: 3msupport.safety.au@mmm.com
Web: www.3M.com.au/ppesafety

3M New Zealand Pty Ltd
94 Apollo Drive
Rosedale, Auckland 0632
Customer Services: 0800 252 627
Email: 3msupport.safety.nz@mmm.com
Web: www.3M.com/nz/ppesafety

3M and Versaflo are trademarks
of the 3M company.
© 3M 2025. All rights reserved.

**Replace all damaged parts immediately
to ensure correct levels of protection.**

Note: 3M does not accept responsibility or liability, direct or consequential, arising from reliance upon any information provided and the user should determine the suitability of the products for their intended use. Nothing in this statement will be deemed to exclude or restrict 3M's liability for death or personal injury arising from its negligence or fraudulent misrepresentation.

3M™ Versaflo™ M-400 Series Helmets

To maintain protection levels, optimise the effective product life, it is extremely important to carry out regular checks and maintenance.

► Before Each Use

- Inspect for damage and replace if necessary:
 - Outer shroud – ensure it is free from tears and its gasket is inserted properly
 - Inner collar
 - Visor frame to jaw gasket
 - Visor - surround and gasket
 - Helmet shell
 - Forehead seal
 - Head harness
 - Comfort pad/s
- Replace Peel Off visor covers (if used).

► Record Retention

- Carry out all the 'Before Each Use' inspections and create record of this monthly check.

► After Use

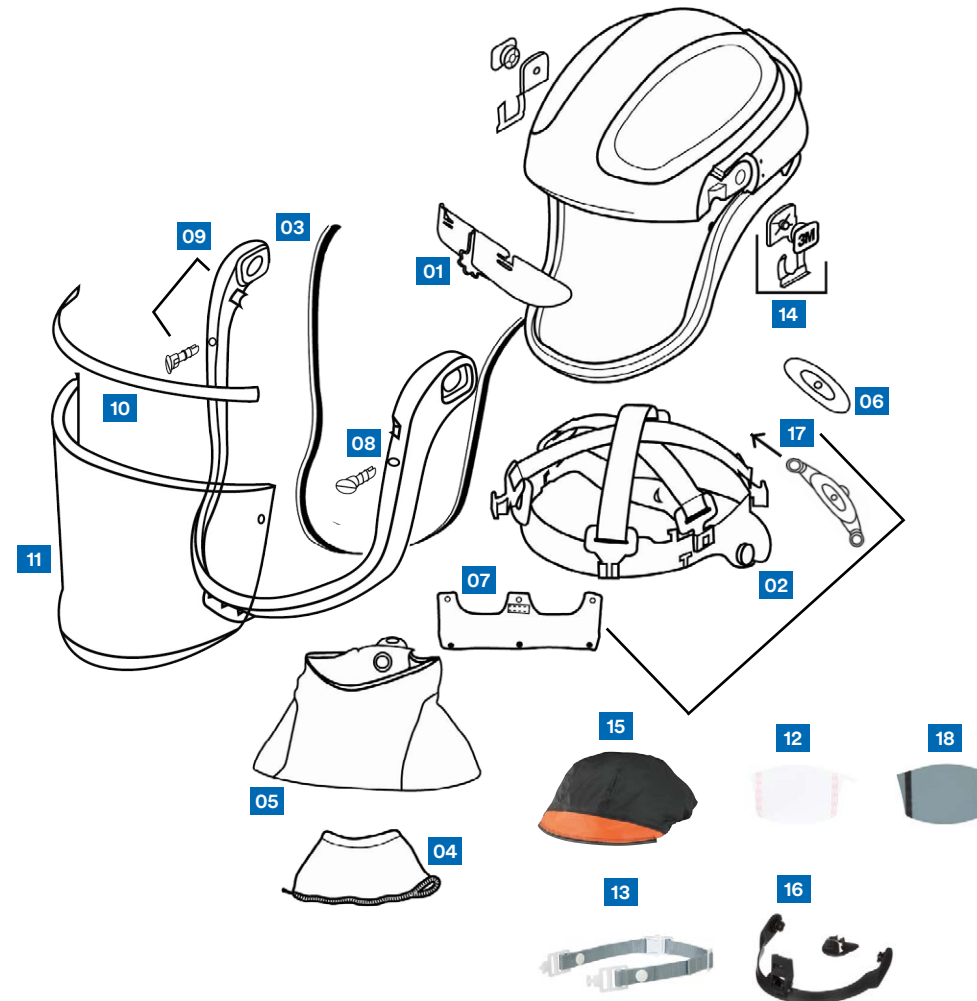
- Clean with cloth dampened with a mild solution of water and liquid household soap.
- Wipe down with 3M 504 Wipes.
- Store in a dry, clean area / locker away from direct sunlight, high temperatures and solvents.

► Ordering Consumables, Repair Parts and Accessories

To request a quote or place an order for these items, please contact your 3M Approved Distributor.

► Further Information and Advice

If you require additional guidance on the Care and Maintenance of your 3M Powered and Supplied Air Equipment, please contact 3M Customer Service or your local 3M representative.



Description	Part No.
3M™ Versaflo™ M-406 Respiratory Helmet, with Coated Visor and High Durability Shroud	M-406
3M™ Versaflo™ M-407 Respiratory Helmet, with Coated Visor and Flame Resistant Shroud	M-407
Accessories and spare parts	
01 Replacement Airflow Deflector	M-316
02 Head Suspension	M-350
03 Jaw Gasket	M-441
04 Inner Collar	M-444
05 Flame Resistant Outer Shroud (comes with M-407)	M-447
05 High Durability Outer Shroud (comes with M-406)	M-448
06 Size Reducing Ratchet Comfort Pad	M-956
07 Forehead Comfort Pad	M-957
08 Visor Frame Buttons	M-919
09 Visor Frame Assembly	M-920
10 Visor Gasket	M-921
11 Coated visor – providing chemical and scratch resistance	M-927
12 Peel-Off Visor Covers	M-928
13 Chin Strap	M-959
14 Visor Pivot Kit	M-960
15 Flame Resistant Headtop Cover	M-972
16 3M™ Versaflo™ Cap Lamp Bracket	M-940
17 Headband Back Part Ratchet	M-953
18 Tinted Peel Off Visor Covers	M-924-25

Note: Products may not be set up or stocked in ANZ. Please contact 3M for availability.



QR-MS-CMP

Click or Scan for Detailed
Care & Maintenance
Guidance



QR-MS-VID

Click or Scan for
M-Series Video



QR-M4-TDS

Click or Scan for M-400
Tech Data Sheet

3M™ Versaflo™ TR-300+ Powered Air Respirator

To maintain protection levels, optimise the effective product life, it is extremely important to carry out regular checks and maintenance.

► Battery

- Should be immediately charged after receipt of product.

► Before Each Use

- Use indicator button to confirm battery charge.
- Ensure correct filter is fitted.
- If spark arrestor and/or pre-filter are used ensure they are clean.
- Use air-flow indicator to confirm correct flow rate. If ball is below the line at first it may rise further – allow up to 60 seconds for the flow to stabilise. If the ball does not stabilize above the line, a filter change may be required.
- Visually inspect for damage.

► Record Retention

- Carry out all the 'Before Use' inspections and create record of this monthly check.

► After Use

- Clean with cloth dampened with a mild solution of water and liquid household soap.
- Wipe down with 3M 504 Wipes.
- Store in a dry, clean area / locker away from direct sunlight, high temperatures and solvents.

► Every filter change

- Inspect Filter and inner seal and replace if damaged.
- Always properly install the Filter into the Turbo.
- When installed properly, filter label should be visible and legible, with filter cover.

► Ordering Consumables, Repair Parts and Accessories

To request a quote or place an order for these items, please contact your 3M Approved Distributor.

► Further Information and Advice

If you require additional guidance on the Care and Maintenance of your 3M Powered and Supplied Air Equipment, please contact 3M Customer Service Helpline or your local 3M representative.

3M Australia Pty Ltd
Bldg A, 1 Rivett Road
North Ryde NSW 2113
Customer Service: 1300 363 565
Email: 3msupport.safety.au@mmm.com
Web: www.3M.com.au/ppesafety

3M New Zealand Pty Ltd
94 Apollo Drive
Rosedale, Auckland 0632
Customer Services: 0800 252 627
Email: 3msupport.safety.nz@mmm.com
Web: www.3M.com/nz/ppesafety

3M and Versaflo are trademarks of the 3M company.
© 3M 2025. All rights reserved.

Replace all damaged parts immediately to ensure correct levels of protection.



Description	Part No.
01 3M™ Versaflo™ TR-302E+ Powered Air Turbo Unit (complete with Filter Cover and Air Flow Indicator)	TR-302E+
02 3M™ Versaflo™ TR-315+ (TR-315+ Versaflo Starter kit which includes TR-302E+ Air filter unit, BT-30 Breathing Tube, TR-970 Air flow indicator, TR-332 Battery Pack, TR-341A Single station Battery charger, TR-3712E PAPR-P3 Particulate filter, TR-371+ Filter cover, TR-3600 Prefilter, TR-362E Spark arrestor and TR-325 Standard waist belt. Does not include a headtop/hood which is required to be purchased separately)	TR-315+
03 3M™ Versaflo™ Standard Belt	TR-325
04 3M™ Versaflo™ Leather Belt	TR-326
05 3M™ Versaflo™ Easy-Clean Belt	TR-327
06 3M™ Versaflo™ High Capacity Battery Pack	TR-332
07 3M™ Versaflo™ PAPR Cover	TR-381
08 3M™ Versaflo™ Single Station Charger Kit	TR-342A
09 3M™ Versaflo™ 3 Station Battery Charging Cradle Kit	TR-342-3
10 3M™ Versaflo™ Spark Arrestor	TR-362
11 3M™ Versaflo™ Replacement Filter Cover	TR-371+
12 3M™ Versaflo™ Pre-Filter	TR-3600
13 3M™ Versaflo™ Particulate Filter PAPP-P3	TR-3712E
14 3M™ Versaflo™ Particulate Filter PAPR-P3/Nuisance Level* Organic Vapour Filter	TR-3802E
15 3M™ Versaflo™ Particulate Filter PAPR-P3/HF/Nuisance Level* Acid Gas Filter	TR-3822E
16 3M™ Versaflo™ Airflow Indicator	TR-971
17 3M™ Versaflo™ Easy Clean Backpack	TR-927
18 3M™ Versaflo™ Heavy Duty Backpack	BPK-HD

*Nuisance level are exposures below the workplace exposure standard/limit

NOTE: Products may not be set up or stocked in ANZ. Please contact 3M for availability.



QR-TR3-CMP

Click or Scan for Detailed
Care & Maintenance
Guidance



QR-TR3-VID

Click or Scan for Use, Care
& Maintenance Video



QR-TR3-TDS

Click or Scan for
TR-300+ Tech Data Sheet

Note: 3M does not accept responsibility or liability, direct or consequential, arising from reliance upon any information provided and the user should determine the suitability of the products for their intended use. Nothing in this statement will be deemed to exclude or restrict 3M's liability for death or personal injury arising from its negligence or fraudulent misrepresentation.



3M™ Versaflo™ TR-600 Powered Air-Respirator

To maintain protection levels, optimise the effective product life, it is extremely important to carry out regular checks and maintenance on Powered and Supplied Air Respirators.

► Battery

- Should be immediately charged after receipt of product

► Before Each Use

- Ensure Battery is fully charged
- Ensure Turbo is undamaged
- Ensure Turbo is correctly secured to its belt or backpack
- Ensure Filter is correctly fitted
- Perform airflow check -insert Airflow Indicator Tube. Refer to Turbo user instructions for information
- Perform alarm check. Refer to Turbo user instructions for information

► Record Retention

- Carry out all the 'Before Use' inspections and create a record of this monthly check for the turbo

► After Use

- Clean with cloth dampened with a mild solution of water and liquid household soap
- Turbo may also be worn through a shower to remove further contaminant
- Wipe down with 3M 504 Wipes
- Turbo can also be immersed for cleaning or put in respirator washer for cleaning (using TR-653 Cleaning & Storage Kit)
- Battery can be immersed for cleaning (using TR-653 Cleaning & Storage Kit)
- Refer to user instructions for cleaning information
- Charge Battery (if required)
- Change Spark Arrestor, Pre-Filter and/or Filter (if required)
- Store in a dry, clean area/locker away from direct sunlight, high temperature and solvents

► Every Filter Change

- Inspect Filter and inner seal and replace if damaged
- Always properly install the Filter into the Turbo
- When installed properly, filter label should be visible and legible, with filter cover

► Ordering Consumables, Repair Parts and Accessories

To request a quote or place an order for these items, please contact your 3M Approved Distributor.

► Further Information and Advice

If you require additional guidance on the Care and Maintenance of your 3M Powered and Supplied Air Equipment, please contact 3M Customer Service or your local 3M representative.



Description		Part No.
01	3M™ Versaflo™ Powered Air Turbo TR-602E	TR-602E
02	3M™ Versaflo™ Powered Air Turbo Starter Kit TR-619A This Versaflo Starter Kit includes the TR-602E powered air turbo unit, TR-632 battery, BT-30 Breathing Tube, TR-971 Airflow indicator, TR-6600 Pre Filter, TR-662 Spark arrestor, TR-627 Easy Clean Belt, TR-641A single station battery charger. Does NOT include a filter, filter cover, and headtop/hood which are required to be purchased separately.	TR-619E
03	3M™ Versaflo™ Filter Cover TR-6700FC	TR-6700FC
04	3M™ Versaflo™ Particulate Filter TR-6710ANZ	TR-6710ANZ
05	3M™ Versaflo™ PAPR-P3 with nuisance* level organic vapour Filter TR-6110E	TR-6110E
06	3M™ Versaflo™ Filter Cover TR-6100FC	TR-6100FC
07	3M™ Versaflo™ PAPR-A1P3 Filter TR-6310ANZ	TR-6310ANZ
08	3M™ Versaflo™ Filter Cover TR-6300FC	TR-6300FC
09	3M™ Versaflo™ PAPR-A1B1E1HgP3 Filter TR-6580ANZ	TR-6580ANZ
10	3M™ Versaflo™ Filter Cover TR-6500FC	TR-6500FC
11	3M™ Versaflo™ Standard Battery TR-630	TR-630
12	3M™ Versaflo™ High Capacity Battery TR-632	TR-632
13	3M™ Versaflo™ Single Station Battery Charger Kit TR-642A	TR-642A
14	3M™ Versaflo™ 3 Station Battery Charger Kit TR-642-3	TR-642-3
15	3M™ Versaflo™ High Durability Belt TR-626	TR-626
16	3M™ Versaflo™ Easy Clean Belt TR-627	TR-627
17	3M™ Versaflo™ Pre-filter TR-6600	TR-6600
18	3M™ Versaflo™ Spark Arrestor TR-662	TR-662
19	3M™ Versaflo™ Filter Latch Assembly TR-651	TR-651
20	3M™ Versaflo™ Cleaning & Storage Kit TR-653	TR-653
21	3M™ Versaflo™ Heavy Duty Backpack	BPK-HD
22	3M™ Versaflo™ PAPR Cover TR-681	TR-681
23	3M™ Versaflo™ Easy Clean Backpack	TR-927
24	3M™ Versaflo™ Airflow Indicator TR-971	TR-971

*Nuisance level are exposures below the workplace exposure standard/limit

NOTE: Products may not be set up or stocked in ANZ. Please contact 3M for availability.



QR-TR6-CMP

Click or Scan for Detailed
Care & Maintenance
Guidance



QR-TR6-VID

Click or Scan for Use, Care
& Maintenance Video



QR-TR6-TDS

Click or Scan for
TR-600 Tech Data Sheet

3M Australia Pty Ltd
Bldg A, 1 Rivett Road
North Ryde NSW 2113
Customer Service: 1300 363 565
Email: 3msupport.safety.au@mmm.com
Web: www.3M.com.au/ppesafety

3M New Zealand Pty Ltd
94 Apollo Drive
Rosedale, Auckland 0632
Customer Services: 0800 252 627
Email: 3msupport.safety.nz@mmm.com
Web: www.3M.com/nz/ppesafety

3M and Versaflo are trademarks
of the 3M company.
© 3M 2025. All rights reserved.

**Replace all damaged parts immediately
to ensure correct levels of protection.**

Note: 3M does not accept responsibility or liability, direct or consequential, arising from reliance upon any information provided and the user should determine the suitability of the products for their intended use. Nothing in this statement will be deemed to exclude or restrict 3M's liability for death or personal injury arising from its negligence or fraudulent misrepresentation.



3M™ Versaflo™ TR-800 Powered Air-Respirator

To maintain protection levels, optimise the product life, it is extremely important to carry out regular checks and maintenance on Powered and Supplied Air Respirators.

Battery

- Should be immediately charged after receipt of product

Before Each Use

- Use indicator button to confirm battery charge.
- Ensure correct filter is fitted.
- If spark arrestor and/or pre-filter are used ensure they are clean.
- Use air-flow indicator to confirm correct flow rate. If ball is below the line at first it may rise further – allow up to 60 seconds for the flow to stabilise. If the ball does not stabilize above the line, a filter change may be required.
- Visually inspect for damage.

Record Retention

- Carry out all the 'Before Use' inspections and create a record of this monthly check for the turbo

After use

- Clean with cloth dampened with a mild solution of water and liquid household soap
- Turbo may also be worn through a shower to remove further contaminant
- Wipe down with 3M 504 Wipes
- Turbo can also be immersed for cleaning or put in respirator washer for cleaning (using TR-653 Cleaning & Storage Kit)
- Battery can be immersed for cleaning (using TR-653 Cleaning & Storage Kit)
- Refer to user instructions for cleaning information
- Charge Battery (if required)
- Change Pre-Filter and/or Filter (if required)
- Store in a dry, clean area/locker away from direct sunlight, high temperature and solvents

Every filter change

- Inspect Filter and inner seal and replace if damaged
- Always properly install the Filter into the Turbo
- When installed properly, filter label should be visible and legible, with filter cover.

Ordering consumables, repair parts and accessories

To request a quote or place an order for these items, please contact your 3M Approved Distributor.

Further information and advice

If you require additional guidance on the Care and Maintenance of your 3M Powered and Supplied Air Equipment, please contact 3M Customer Service or your local 3M representative.



Description		Part No.
01	3M™ Versaflo™ TR-802E Intrinsically Safe Powered Air Turbo	TR-802E
02	3M™ Versaflo™ TR-819A IS Starter Kit This Versaflo Starter Kit includes Intrinsically Safe TR-802E powered air turbo unit, TR-830 battery, BT-30 Breathing Tube, TR-6600 Pre filter, TR-627 Easy Clean Belt, TR-971 Airflow indicator, TR-641A single station battery charger and TR-838 battery attachment tool. Does NOT include a filter, filter cover, or headtop/hood which are required to be purchased separately	TR-819E
03	3M™ Versaflo™ High Durability Belt TR-626	TR-626
04	3M™ Versaflo™ Easy Clean Belt TR-627	TR-627
05	3M™ Versaflo™ Battery TR-830	TR-830
06	3M™ Versaflo™ Battery Attachment Tool TR-838	TR-838
07	3M™ Versaflo™ Single Station Battery Charger Kit TR-642A	TR-642A
08	3M™ Versaflo™ 3-Station Battery Charger Kit TR-642-3	TR-642-3
09	3M™ Versaflo™ Pre-filter TR-6600	TR-6600
10	3M™ Versaflo™ Particulate Filter TR-6710ANZ	TR-6710ANZ
11	3M™ Versaflo™ PAPR-P3 with nuisance* level organic vapour Filter TR-6110E	TR-6110E
12	3M™ Versaflo™ PAPR-A1P3 Filter TR-6310ANZ	TR-6310ANZ
13	3M™ Versaflo™ PAPR-A1B1E1HgP3 Filter TR-6580ANZ	TR-6580ANZ
14	3M™ Versaflo™ Filter Cover TR-6700FC	TR-6700FC
15	3M™ Versaflo™ Filter Cover TR-6100FC	TR-6100FC
16	3M™ Versaflo™ Filter Cover TR-6300FC	TR-6300FC
17	3M™ Versaflo™ Filter Cover TR-6500FC	TR-6500FC
18	3M™ Versaflo™ Airflow Indicator TR-971	TR-971
19	3M™ Versaflo™ Filter Latch Assembly TR-851	TR-851
20	3M™ Versaflo™ Cleaning & Storage Kit TR-653	TR-653
21	3M™ Versaflo™ Heavy Duty Back Pack	BPK-HD
22	3M™ Versaflo™ Easy Clean Backpack TR-927	TR-927
23	3M™ Versaflo™ PAPR Cover TR-681	TR-681

*Nuisance level are exposures below the workplace exposure standard/limit

Note: Products may not be set up or stocked in ANZ. Please contact 3M for availability.



QR-TR8-CMP

Click or Scan for Detailed
Care & Maintenance
Guidance



QR-TR8-VID

Click or Scan for Use, Care
& Maintenance Video



QR-TR8-TDS

Click or Scan for
TR-800 Tech Data Sheet

3M Australia Pty Ltd
Bldg A, 1 Rivett Road
North Ryde NSW 2113
Customer Service: 1300 363 565
Email: 3msupport.safety.au@mmm.com
Web: www.3M.com.au/ppesafety

3M New Zealand Pty Ltd
94 Apollo Drive
Rosedale, Auckland 0632
Customer Services: 0800 252 627
Email: 3msupport.safety.nz@mmm.com
Web: www.3M.com/nz/ppesafety

3M and Versaflo are trademarks
of the 3M company.
© 3M 2025. All rights reserved.

**Replace all damaged parts immediately
to ensure correct levels of protection.**

Note: 3M does not accept responsibility or liability, direct or consequential, arising from reliance upon any information provided and the user should determine the suitability of the products for their intended use. Nothing in this statement will be deemed to exclude or restrict 3M's liability for death or personal injury arising from its negligence or fraudulent misrepresentation.